



MINISTERUL EDUCAȚIEI
ȘI CERCETĂRII
AL REPUBLICII MOLDOVA



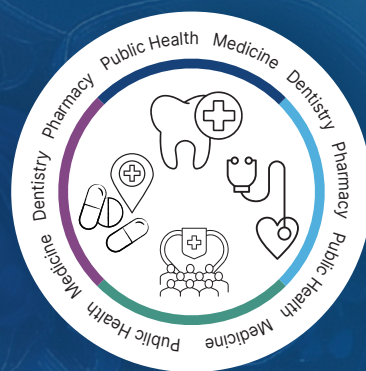
MINISTERUL SĂNĂTĂȚII
AL REPUBLICII MOLDOVA



NICOLAE TESTEMITANU STATE UNIVERSITY
OF MEDICINE AND PHARMACY
OF THE REPUBLIC OF MOLDOVA

**Med
spera**

PROGRAM 10th BOOK



International Medical Congress
for Students and Young Doctors

24-27 April 2024



Chisinau,
Republic of Moldova

POWERED BY



ASSOCIATION OF MEDICAL
STUDENTS AND RESIDENTS



NICOLAE TESTEMITANU STATE UNIVERSITY OF MEDICINE
AND PHARMACY OF THE REPUBLIC OF MOLDOVA



ASSOCIATION OF MEDICAL
STUDENTS AND RESIDENTS



Program Book

MedEspera 2024

**The 10th International Medical Congress
for Students and Young Doctors**

24-27 April 2024

Chişinău, Republic of Moldova

Powered by



BRIEF HISTORY

Nicolae Testemitanu State University of Medicine and Pharmacy of the Republic of Moldova is a national leader and the only higher education institution in the country that trains doctors, pharmacists and specialists for the health system, gaining international recognition as well.



The university was established based on the Institute of Medicine No. 1, Institute of Medicine No. 2, the Institute of Pediatrics of Leningrad (today Saint Petersburg) and representatives of other USSR institutions that had been evacuated during World War II to Kislovodsk and later transferred to the Moldavian Soviet Socialist Republic with their students and entire teaching staff. Thus, Chisinau State Institute of Medicine (CSIM) was founded. On October 20, 1945, the Institute started its activity with the only faculty – that of General Medicine, which had 32 departments. About 1000 students studied here, the teaching process being ensured by 130 professors.

The Faculty of Pediatrics was created in 1954, the Faculty of Stomatology – in 1959, the Faculty of Preventive Medicine – in 1963, and the Faculty of Pharmacy – one year later.

Starting from 1990, the institution has borne the name of Nicolae Testemitanu (1927-1986) – Professor Emeritus, Rector, Minister of Health, famous scientist and eminent organizer of healthcare. In the following year, the Institute was reorganized into a university.

In 1992, a more advanced higher education form – postgraduate training of future medical specialists and pharmacists through residency – was introduced, and in 2000, the Faculty of Residency and Clinical Fellowship was opened. In 2010, the Faculty of Medicine No. 2 was established to provide training in English for international students.

Currently, undergraduate studies (cycle I) are offered for Public Health, Optometry, Nursing, Radiological Technology, Physical therapy and Rehabilitation specialties; integrated higher education (cycle I and II) is provided for Medicine, Stomatology and Pharmacy specialties; and master's studies (cycle II) take place under the following programs: Management in

Public Health, Molecular Technologies in Health, Human Nutrition, Clinical Optometry and Public Mental Health. All study programs are accredited at national level, and the integrated ones – at international level, as well, according to the standards of the World Federation for Medical Education (WFME), and the Stomatology Program has also been accredited by the Dental Board of California.

Starting from November 2015, higher doctoral studies (cycle III) are organized at the Doctoral School in Health Sciences, under 46 doctoral programs, while advanced fundamental and applied scientific research is being conducted within the framework of postdoctoral programs.

Postgraduate studies through residency can be done in 50 disciplines. Since 2016, the process of continuing professional training of doctors and pharmacists has been managed by the Department of Continuing Medical Education, the University providing over 428 medical education programs.

The noble mission of training specialists for the health system is being fulfilled by

approximately 1200 academic staff members and scientists (academicians and corresponding members of the Academy of Sciences of Moldova, full and honorary members of the academies of other states, PhDs and Doctor of Sciences, laureates of the State Prize in the field of science and technology).

In 2019, *Nicolae Testemitanu* University obtained the status of an internationally accredited institution according to WFME standards. During 78 years of activity, the University has trained over 49,000 doctors and pharmacists. As a sign of high appreciation of special merits in the development of healthcare and medical sciences and for the substantial contribution to the training of highly qualified specialists, the University was awarded the Order of *Labor Glory* in 2005 and the *Order of the Republic* in 2015.

Nicolae Testemitanu University aspires to continuous development, quality, excellence in all its activities, and members of the academic community strive to ensure its upward path by implementing modern methods of training, research and medical practice, and adjusting all curricula to international standards of higher medical and pharmaceutical education.

MESSAGE OF THE RECTOR



Dear students and young doctors,

We invite you to *Nicolae Testemitanu* State University of Medicine and Pharmacy of the Republic of Moldova: we always encourage young people in their initiatives. It is our duty to inspire them to create, develop and overcome their own limits. The *MedEspera* International Congress

of Students and Young Doctors is a proof of our commitment to this endeavor. The Association of Students and Residents in Medicine organizes it twice a year. We appreciate them for their inexhaustible energy and commitment to do their best.

This year, *Nicolae Testemitanu* University will host the 10th edition of the Congress. We hope it will be a great opportunity for students and young doctors to exchange ideas in research and academic activities. The number of foreign participants in *MedEspera* emphasizes the fact that medicine has no borders. We hope that this year will not be an exception and our foreign colleagues will attend the congress and be fully satisfied with the results and experience gained.

We wish all of you good luck! Don't forget to follow your dreams and work hard to achieve your goals. Take full advantage of this event and feel free to share your experiences and adopt best practices from renowned teachers and your colleagues.

I sincerely hope that your impressions of *Nicolae Testemitanu University* and Moldova will be unforgettable!

E. Ceban

Rector
Emil Ceban,
MD, PhD, Professor, CM of ASM

WELCOME MESSAGE
OF THE ORGANIZING COMMITTEE

Dear Esteemed Participants,

On behalf of the Organizing Committee, we are delighted and eagerly welcome all participants to the 10th edition of the MedEspera International Congress for Students and Young Doctors that takes place in Chisinau, Moldova, at *Nicolae Testemitanu* State University of Medicine and Pharmacy of the Republic of Moldova! We are immensely grateful for your commitment to advancing medical knowledge, fostering collaboration, and driving innovation in the field of medicine.

Since the very 1st edition, MedEspera became popular among medical students and young doctors from the Republic of Moldova and abroad. Our purpose is to contribute and maintain the development of brilliant young minds by bringing the latest information at keynotes and workshops we've prepared. The Congress' program includes all possibilities to develop new abilities, discover different medical fields and spend unforgettable time in Chisinau.

As we embark on this journey together, let us seize the opportunity to learn from one another, forge lasting connections, and collectively shape the future of medicine. Your participation and contributions are integral to the success of this congress, and we look forward to experiencing this transformative event with each and every one of you. We sincerely wish you to take the best of MedEspera 2022!

President of Honour

Emil CEBAN, Rector of *Nicolae Testemitanu* State University of Medicine and Pharmacy of the Republic of Moldova, MD, PhD, Professor

Organizing Committee

Head of Organizing Committee:

Maria-Magdalena VICOL

President of Association of Medical Students and Residents:

Gheorghe BURUIANA

Executive Secretary:

Ana-Maria BELOV

Staff:

Aramă Crina, Belov Ana-Maria, Boico Irina, Bolăndău Luca, Burda Loredana, Buruiană Gheorghe, Chisaru Pavel, Ciorici Daniela, Curoșu Maximian, Dreyah Candice, Grajdean Cristina, Iepure Maria, Iepure Paula, Ivaschiv Nicoleta, Lile Rareș, Mereacre Liviu, Lopatinschi Valeria, Machidon Daniela, Saini Jai, Sorocian Ionela, Stafi Vlada, Tofan Lucian, Țurcan Dumitrița, Vicol Adrian, Vicol Maria-Magdalena

Chairman of the Editorial Board

Stanislav GROPPA

Vice-Rector for Scientific Activity, MD, PhD, Professor, Academician
Nicolae Testemitanu State University of Medicine and Pharmacy of the Republic of Moldova

Members of Honour

ALEKSANDRA VEJNOVIC- MD, PhD candidate, Assistant Professor, University of Novi Sad, Faculty of Medicine, Attending Doctor in Obstetrics and Gynecology, University Clinical Center of Vojvodina, Serbia

ANCUTA CODRINA, MD, PhD, Professor of Rheumatology, UMF „Grigore T.Popa” România.

ANCUTA EUGEN- MD, PhD, MSC, Researcher I Obstetrics and Gynecology, România.

BODOG ALIN- Associate Professor, University of Oradea, Senior Doctor, Head of Obstetrics and Gynecology Department at Spitalul Pelican, Oradea

CIURBA ADRIANA- MD, PhD, Professor, Head of Discipline of Pharmaceutical Technology and Cosmetology, George Emil Palade University of Medicine, Pharmacy, Sciences, and Technology, Târgu Mureş

FURĂU CRISTIAN-GEORGE- MD, PhD, Professor, Department of Biology and Life Sciences, Arad

JAN MUZIK- Department of Information and Communication Technology in Medicine, Faculty of Biomedical Engineering, First Faculty of Medicine, Charles University/ Czech Technical University in Prague.

KAMEL EARAR- MD, PhD, Professor, Head of Prosthetic Implanthology Therapy and Oral Rehabilitation Discipline, General Director of the Medical-Pharmacological Research Center „Dunărea de Jos,, University, Vice Dean of International Affairs ERASMUS of „Dunărea de Jos,, University

PIUYSH JANI- MD, PhD, Professor, Consultant ENT and Head and Neck Surgeon, Cambridge University Hospital, Anatomy Supervisor, Kings College, Cambridge University, United Kingdom.

SANDEEP KAUL- MD, PhD, Professor, FRCS, FEBS, DNB (Surgical Oncology), MS Consultant Colorectal and General Emergency Surgeon, Barking, Havering and Redbridge University NHS Trust, London, United Kingdom.

SIFAKAS NIKOLAOS- MD, Professor of Pneumology, Department of Thoracic Medicine, University of Crete, Greece.

Members of the Workshop Committee:

Ababii Victoria- MD, Assistant Professor

Abraş Marcel- MD, PhD, Associate Professor

Adauji Stela- MD, PhD, Associate Professor

Ancuţa Codrina- MD, PhD, Professor of Rheumatology

Ancuta Eugen- Senior Scientist, MD, PhD, Obstetrics and Gynecology

Bacinschi Nicolae- MD, PhD, Professor

Bălţeanu Olga- MD, PhD, Assistant Professor

Bendelic Eugeniu- MD, PhD, Professor,

Benea Anna- MD, PhD, Assistant Professor

Bîlbă Rodica- MD, PhD

Bodrug Elena- MD, PhD, Associate Professor

Bordeniuc Gheorghe- MD, PhD, Assistant Professor

Butnari Valentin

Calalb Tatiana- MD, PhD, Professor

Călăraş Diana- MD, PhD, Associate Professor

Călin Pavel- MD, Assistant Professor

Carabulea Gabriela- MD, PhD, Assistant Professor

Catrinici Rodica- MD, PhD, Associate Professor

Cebotari Vasile- kinetotherapist, Assistant Professor

Chele Dumitru- MD, PhD, Assistant Professor

Chele Nicolae- MD, PhD, Professor

Chetrus Viorica- MD, Associate Professor

Chior Pavel

Ciobanu Cristina- MD, PhD, Associate Professor

Ciobanu Nicolae- MD, PhD, Associate Professor

Ciobanu Sergiu- MD, PhD, Professor

Cojocaru-Toma Maria- MD, PhD, Associate Professor

Corlăţeanu Alexandru- MD, PhD, Professor

Cucu Dragoş- MD, Assistant Professor

Cucurudza Nicolae

Culiuc Vasile- MD, Associate Professor

Cumpătă Serghei- MD, Assistant Professor

Dobrin Iulia- MD, PhD, Assistant Professor

Dogotari Liliala- MD, PhD, Associate Professor

Dumbraveanu Lilia- MD, PhD, Associate Professor

Eleni Vladimir- MD, PhD student, Assistant Professor

Eni Lidia- MD, Associate Professor

Fala Valeriu- MD, PhD, Professor

Ferbeii Ivan

Furău Cristian-George- MD, PhD, Professor

Fursenco Cornelia- MD, PhD student, Assistant Professor

Gavriliuc Pavel- MD, PhD, Assistant Professor

Gorea Corneliu- MD, Assistant Professor

Grăjdieru Stela- Superior Laborant

Grejdieru Alexandra- MD, PhD, Associate Professor

Guranda Diana- MD, PhD, Associate professor

Halabi Abdalah- MD, PhD student

Hotineanu Adrian- MD, PhD, Professor

Lozan-Tîrșu Carolina- MD, PhD, Associate Professor

Macari Doina- MD, PhD student, Assistant Professor

Marcu Diana- MD, Associate Professor

Mazur Ecaterina- MD, PhD student, Assistant Professor

Mazur-Nicorici Lucia- MD, PhD, Professor

Mihail Anton- MD, PhD student, Associate professor

Mitriuc Diana- MD, Associate Professor

Moscaliuc Alina

Motelica Gabriela- MD, PhD, Assistant Professor

Munteanu Oxana- MD, PhD, Associate Professor

Musteață Olesea- MD, Assistant Professor

Musteață Vasile- MD, PhD, Associate Professor

Ohindovschi Angelica- MD, PhD student, Assistant Professor

Peredelcu Rodica- MD, PhD, Assistant Professor

Pisarenco Constantin- MD, PhD, Associate Professor

Pisarenco Sergiu- MD, PhD, Associate Professor

Podgurschi Lilia- MD, PhD, Associate Professor

Pompuș Irina

Poștaru Cristina- MD, Assistant Professor

Roman Ion- MD, Associate Professor

Șalaru Virginia- MD, PhD, Associate Professor

Sărătilă Iurie

Savca Dumitru

Șchiopu Victor- MD, PhD, Assistant Professor

Scutari Corina- MD, Associate Professor

Sîrbu Irina- MD, PhD, Assistant Professor

Sîbii Lucia- MD, PhD student, Assistant Professor

Solonari Rodica- MD, PhD, Assistant Professor

Sorina Nicolai- MD, Assistant Professor

Stepco Elena- MD, PhD, Associate Professor

Șchiopu Tatiana- MD, PhD student, Assistant Professor

Topchin Rodica- MD, PhD student

Uncu Livia- MD, PhD, Associate Professor

Ursu Cornel- MD, Assistant Professor

Znagovan Alexandru- MD, PhD,
Associate Professor

Members of the Scientific Committee:

Adauji Stela- MD, PhD, Associate Professor

Bacinschi Nicolae- MD, PhD, Professor

Balan Greta- MD, PhD, Associate
Professor

Bogonovschi Livia- MD, PhD, Associate
Professor

Boronin Larisa- MD, PhD, Associate
Professor

Buruiană Sanda- MD, PhD, Associate
Professor

Calalb Tatiana- MD, PhD, Professor

Calaras Diana- MD, PhD, Associate
Professor

Capcelea Svetlana- MD, PhD, Associate
Professor

Carausu Ghenadie- MD, PhD, Associate
Professor

Catereniuc Ilia- MD, PhD, Professor

Catrinici Rodica- MD, PhD, Associate
Professor

Cemortan Igor- MD, PhD, Associate
Professor

Cernețchi Olga- MD, PhD, Professor

Chele Nicolae- MD, PhD, Professor

Cheptănaru Olga- MD, PhD, Associate
Professor

Chesov Dumitru- MD, PhD, Associate
Professor

Chihai Jana- MD, PhD, Associate
Professor

Chiosa Vitalie- MD, PhD, Associate
Professor

Ciobanu Elena- MD, PhD, Associate
Professor

Ciobanu Nicolae- MD, PhD, Associate
Professor

Ciobanu Sergiu- MD, PhD, Professor

Cobet Valeriu- MD, PhD, Associate
Professor

Corduneanu Angela- MD, PhD, Associate
Professor

Corlăteanu Alexandru- MD, PhD,
Professor

Cracea Angela- MD, PhD, Associate
Professor

Culiuc Vasile- MD, PhD, Associate
Professor

Diacova Svetlana- MD, PhD, Associate
Professor

Eremciuc Rodica- MD, PhD, Assistant
Professor

Fala Valeriu- MD, PhD, Professor

Galearschi Vasile- MD, PhD, Associate Professor

Globa Tatiana- MD, PhD, Associate Professor

Grejdieru Alexandra- MD, PhD, Associate Professor

Grib Livi- MD, PhD, Professor

Groppa Stanislav, MD, PhD, Professor, Academician

Hadjiu Svetlana- MD, PhD, Professor

Iliadi-Tulbure Corina- MD, PhD, Associate Professor

Vudu Lorina- MD, PhD, Professor

Lozovanu Svetlana- MD, PhD, Associate Professor

Mazur Minodora- MD, PhD, Professor

Mazur Nicorici Lucia- MD; PhD, Professor

Matcovschi Sergiu- MD, PhD, Professor

Melnic Eugen- MD, PhD, Associate Professor

Mitriuc Diana- MD, PhD, Associate Professor

Mostovei Andrei MD, PhD, Associate Professor

Nastas Igor- MD, PhD, Associate Professor

Ochisor Viorica- MD, PhD, Associate Professor

Olaru Andrei- MD, PhD, Assistant Professor

Oprea Andrei- MD, PhD, Professor

Oprea Valentin- MD, PhD, Associate Professor

Paraschiv Angela- MD, PhD, Associate Professor

Pogonea Ina- MD, PhD, Associate Professor

Railean Silvia- MD, PhD, Associate Professor

Revenco Ninel- MD, PhD, Professor

Rojnoveanu Gheorghe- MD, PhD, Professor

Romanciuc Lilia- MD, PhD, Assistant Professor

Saptefrati Lilian- MD, PhD, Associate Professor

Scutari Corina- MD, PhD, Associate Professor

Sîrbu Dumitru- MD, PhD, Associate Professor

Solomon Oleg- MD, PhD, Associate Professor

Spătaru Diana- MD, PhD, Associate Professor

Șchiopu Victor- MD, PhD, Assistant Professor

Spinei Aurelia- MD, PhD, Associate Professor

Stepco Elena- MD, PhD, Associate Professor

Tagadiuc Olga- MD, PhD, Professor

Talmaci Cornelia- MD, PhD, Associate Professor

Toma Cristina- MD, PhD, Associate Professor

Trifan Valentina- MD, PhD, Associate Professor

Țurcan Svetlana- MD, PhD, Professor

Uncu Livia- MD, PhD, Associate Professor

Uncuța Diana- MD, PhD, Associate Professor

Vetrilă Snejana- MD, PhD, Associate Professor

Vișnevschi Anatolie- MD, PhD, Professor

Vovc Victor- MD, PhD, Professor



Cuprins

General Program	14
Keynotes.....	22
Symposium.....	25
Round tables.....	26
Workshops	27
Medicine	27
Pharmacy.....	38
Stomatology.....	41
Scientific sessions	45
I. BEYOND THE SCALPEL: EXPLORING FRONTIERS IN SURGICAL SCIENCE	45
II. BREATHE EASY: ADVANCES IN PNEUMOLOGY AND ALLERGOLOGY	49
III. CARING FOR TOMORROW'S LEADERS: INNOVATIONS IN PEDIATRICS.....	51
IV. EXPLORING FUNDAMENTAL SCIENCES IN MEDICINE. ORAL PRESENTATION.....	53
V. EXPLORING FUNDAMENTAL SCIENCES IN MEDICINE. POSTER.....	57
VI. EXPLORING THE BRAIN: ADVANCEMENTS IN NEUROLOGY AND NEUROSURGERY	60
VII. HEARTBEATS OF INNOVATION: FRONTIERS IN CARDIOLOGY RESEARCH.....	62
VIII. JOURNEY INTO THE BODY: PHYSIOLOGY AND PATHOLOGY UNVEILED	65
IX. MINDS MATTER: EXPLORING INNOVATIONS IN MENTAL HEALTH.....	68
X. MIRACLES OF LIFE: INNOVATIONS IN OBSTETRICS AND GYNECOLOGY	71
XI. PHARMACY FRONTIER: ADVANCEMENTS IN PHARMACEUTICAL SCIENCES.....	75
XII. REVOLUTIONIZING CANCER CARE: INNOVATIONS IN ONCOLOGY	78
XIII. SHAPING TOMORROW'S HEALTH: INNOVATIONS IN PUBLIC HEALTH.....	80
XIV. SMILE SAVERS: INNOVATIONS IN DENTISTRY	83
XV. UNLOCKING THE BODY'S SECRETS: INNOVATIONS IN INTERNAL MEDICINE.....	87

General Program

Date	Time	Activity	Location
24.04. 2024	09:00-19:00	Welcome kit handing	University Sociocultural Complex Nicolae Testemițanu 25, str., 1 st floor
	14:00-15:30	Workshop: The Level of Microbial Contamination of Objects Before and After the Use of Various Antiseptic Agents	Blocul nr. 6, 1st floor, cab, 105 Nicolae Testemițanu 28
	15:00-17:30	Workshop: The Holistic Approach in Oncology Care	Oncologic Institute Nicolae Testemițanu 30
	16:00-17:00	Round table: JUNCU VICTOR: Approach to cytomegalovirus infection in perinatal medicine	University Sociocultural Complex Nicolae Testemițanu 25, str., 2 nd floor
	16:00-17:00	Round table: NACU VIOREL: Artificial organs and tissues in transplantation - current affairs and perspectives	University Sociocultural Complex Nicolae Testemițanu 25, str., 1 st floor
	17:30-18:30	Round table: ANDRUȘCA ALEXANDRU: Surgical technique of Deep Brain Stimulation in Parkinson's Disease	University Sociocultural Complex Nicolae Testemițanu 25, str., 2 nd floor
	16:00-18:00	Symposium: <ul style="list-style-type: none"> • VICTOR VOVC: <i>The impact of the circadian rhythm in contemporary medicine</i> (10 min) • LUPUȘOR ADRIAN: <i>Examination of patients with sleep disorders. Orofacial anomalies as physiopathological mechanisms of sleep-disordered breathing.</i> (20 min) • GHETIU ALEXANDRU: <i>Orofacial and maxillofacial surgery in the treatment of sleep-disordered breathing</i> (20 min) • BUȘMACHIU ANDREI: <i>Intraoral devices in the treatment of sleep apnea syndrome</i> (20 min) • LUPUȘOR ADRIAN: <i>How to optimize the circadian rhythm for academic success?</i> (15 min) • Discussions (30 min) 	University Sociocultural Complex Nicolae Testemițanu 25, str., 3 rd floor

	18:30-20:00	MedGames	Conference room, ASR Nicolae Testemițanu 25, basement
25.04. 2024	08:00-09:00	Keynote: PIUYSH JANI (UK) <i>How to assess Thyroid Nodules</i>	University Sociocultural Complex Nicolae Testemițanu 25, str., 3 rd floor
	08:00-09:00	Keynote: FURĂU-CRISTIAN GEORGE (România) <i>HPV infection- from pathogenesis to genital and oropharyngeal cancers</i>	University Sociocultural Complex Nicolae Testemițanu 25, str., 2 nd floor
	09:00-10:00	Keynote: FURĂU-CRISTIAN GEORGE (România) BODOG ALIN (România) <i>Sexual rights and family planning</i>	University Sociocultural Complex Nicolae Testemițanu 25, str., 2 st floor
	10:00-11:00	Opening Ceremony	University Sociocultural Complex Nicolae Testemițanu 25, str., 3 rd floor
	11:00-12:00	Keynote: SIAFAKAS NIKOLAOS (Grecia) KATERINA M. ANTONIOU (Grecia) <i>The future of respiratory medicine in the era of artificial intelligence</i>	University Sociocultural Complex Nicolae Testemițanu 25, str., 3 rd floor
	11:00-12:00	Keynote: SANDEEP KAUL (UK) <i>The art of inguinal hernia surgery</i>	University Sociocultural Complex Nicolae Testemițanu 25, str., 2 nd floor
	11:00-12:00	Keynote: KAMEL EARAR (România) <i>Non-metallic biomaterial involved in dental prosthetic: from studies to clinical applications</i>	Timofei Moșneaga Republican Clinical Hospital Nicolae Testemițanu 29, str., 1 st floor
	12:00-13:00	Lunch break	University Sociocultural Complex Nicolae Testemițanu 25, str., 1 st floor
	13:00-15:00	Workshop: Optimizing Cesarean Sections: Exploring the Vejnovici Technique	University Sociocultural Complex Nicolae Testemițanu 25, str., 1 st floor
	13:00-15:00	Workshop: Laparoscopic Essentials: Mastering Fundamental Maneuvers	Training room ASR Nicolae Testemițanu 25, str., basement

13:00-15:00 16:00-18:00	Workshop: Mastering the Art of Knots and Sutures: A Practical Workshop for Surgical Precision	Conference room ASR Nicolae Testemițanu 25, str., basement
13:00-15:00 16:00-18:00	Workshop: Gastric Suturing Mastery: Techniques for Surgical Success	Coreography room ASR Nicolae Testemițanu 25, str., basement
13:30-15:00 15:30-17:00	Workshop: Advancements in Retinal Pathology Diagnosis: Multimodal Imaging Techniques	Timofei Moșneaga Republican Clinical Hospital Nicolae Testemițanu 29, str., 8 th floor
13:30-15:00	Workshop: Enhancing Rational Drug Use Skills	Pharmacology and Clinical Pharmacology Department Blocul didactic nr. 1 „Leonid Cobâleanschi” Nicolae Testemițanu 27, str., 3 rd floor
13:30-15:00	Workshop: The efficacy and safety of antihypertensive medications in patients based on gender	Pharmacology and Clinical Pharmacology Department Blocul didactic nr. 1 „Leonid Cobâleanschi” Nicolae Testemițanu 27, str., 3 rd floor
13:30-15:00	Workshop: Specificities in imaging diagnosis of rare fractures of the radiocarpal joint in children	Timofei Moșneaga Republican Clinical Hospital Nicolae Testemițanu 29, str., Euromed
15:30-16:30	Workshop: The current updates in imaging diagnosis of pediatric medical emergencies	Timofei Moșneaga Republican Clinical Hospital Nicolae Testemițanu 29, str., Euromed
14:00-15:30 16:00-17:30	Workshop: Insight into the Eyes: Exploring Ophthalmoscopy for Diagnostic Precision	Timofei Moșneaga Republican Clinical Hospital Nicolae Testemițanu 29, 5 th floor
13:30-15:00	Workshop: Contemporary diagnostic options in hematology	Oncologic Institute Nicolae Testemițanu 30

13:30-15:00	Workshop: Heart in Hand: An Interactive Cardiac Dissection Workshop	Forensic Medicine Center Vl. Korolenko 8, str., 3 rd floor
14:00-15:30	Workshop: At the intersection of medicine and law	Blocul didactic central, sala 205 bd. Ștefan cel Mare și Sfânt, 165
14:00-15:30	Workshop: Developing empathy for the aging process	University Clinic of Primary Medical Care 31 August 1989 137a, str.
14:00-15:30	Workshop: Safe laparoscopic cholecystectomy	Municipal Clinic Hospital "Sf. Treime" Alecu Russo 11/1, str., 3 rd floor
14:00-15:30	Workshop: Surgical treatment of infected and chronic wounds	Municipal Clinic Hospital "Sf. Treime" Alecu Russo 11/1, str., 3 rd floor
14:00-15:30 15:45-17:15	Workshop: Management of Myopia: From Theory to Practice	Municipal Clinic Hospital "Sf. Treime" Alecu Russo 11/1, str., 5 th floor
14:00-15:00 15:30-16:30	Workshop: Saving lives starts with you: "Automated External Defibrillation"	Municipal Clinical Emergency Hospital Chisinau Toma Ciorba St. 1, 3 rd floor
14:00-15:00 15:30-16:30	Workshop: Virtual and Augmented Reality in Neurosurgery: The Cutting Edge of Surgical Simulation	Municipal Clinical Emergency Hospital Chisinau Toma Ciorba St. 1, 8 th floor
14:00-15:30 16:00-17:30	Workshop: Mastering Tubes and Catheters Insertions: Practical Workshop for Medical Professionals	CUSIM 31 August 1989 137 A, str., room P11
14:00-15:30 16:00-17:30	Workshop: Electrocardiographic Changes in Rare Syndromes	CUSIM, 206 31 August 1989 137 A, str., room 206
14:00-15:30 16:00-17:30	Workshop: Academy of Respiratory and allergic diseases: Obstructive Sleep Apnea- From Diagnosis to Treatment	CUSIM 31 August 1989 137 A, str., room 210

14:00-15:30 16:00-17:30	Workshop: Academy of Respiratory and allergic diseases: Spirometry – from theory to practice	CUSIM 31 August 1989 137 A, str., room 104
14:00-15:30 16:00-17:30	Workshop: Coronary Angiography: Exploring the Arterial Highways of the Heart	CUSIM 31 August 1989 137 A, str., room 201
14:00-15:30 16:00-17:30	Workshop: Diagnostic Methods in Gynecology: Advancements and Applications	CUSIM 31 August 1989 137 A, str., room 120
14:00-15:30 16:00-17:30	Workshop: Birth Simulation: Bridging Theory and Practice for Safe Deliveries	CUSIM 31 August 1989 137 A, str., room 118/121
14:00-15:30 16:00-17:30	Workshop: Mastering Airway Management: Techniques, Tips, and Troubleshooting	CUSIM 31 August 1989 137 A, str., room 122
14:00-15:30 16:00-17:30	Workshop: Bronchoscopy: Navigating the Airways for Diagnostic Insight	CUSIM 31 August 1989 137 A, str., room 315
14:00-15:30 16:00-17:30	Workshop: Laparoscopy Unveiled: Immersive Simulation for Surgical Skill Enhancement	CUSIM 31 August 1989 137 A, str., room 315
14:00-15:30 16:00-17:30	Workshop: FAST USG: Unveiling the Power of Rapid Ultrasound Assessment in Trauma Care	CUSIM 31 August 1989 137 A, str., room 315
14:00-15:30 16:00-17:30	Workshop: LifeSaver Workshop: Basic Life Support and Defibrillation Training	CUSIM 31 August 1989 137 A, str., room P10/P19
14:00-16:00	Workshop: Prevention methods of dental caries in different clinical situations	Clinica Stomatologică Universitară nr. 2 Mihai Viteazul 1A, curative room 309
16:00-18:00	Workshop: Techniques for Dental Implant Insertion and Essential Aspects of Knots and Sutures	Clinica MasterDent Vasile Lupu 81, str.
14:00-16:00	Workshop: Root canal obturation using different techniques	Clinica Stomatologică Universitară nr. 1 T. Ciorbă 42., room nr.203
14:00-16:00	Workshop: Morphofunctional restoration of the approximal surfaces of the lateral group of teeth	Clinica Stomatologică Universitară nr. 1 T. Ciorbă 42., room nr.205

	14:00-16:00	Workshop: The Hall technique in the restoration of coronal destruction in temporary teeth	Clinica Stomatologică Universitară nr. 2 Mihai Viteazul 1A, curative room 314
	14:00-16:00	Workshop: Complex multidisciplinary treatment for patients with temporo-mandibular disorders.	FalaDental București nr. 13, str.
26.04. 2024	08:00-13:00	Scientific session: Beyond the Scalpel: Exploring Frontiers in Surgical Science	Timofei Moșneaga Republican Clinical Hospital Nicolae Testemițanu 29, str., 1 st floor
	08:00-12:00	Scientific session: Exploring Fundamental Sciences in Medicine. ORAL PRESENTATION	Blocul Auditorial "Nicolae Esanu" Nicolae Testemițanu 20, str.
	08:00-11:30	Scientific session: Heartbeats of Innovation: Frontiers in Cardiology Research	University Sociocultural Complex Nicolae Testemițanu 25, str., 3 rd floor
	09:00-13:00	Scientific session: Miracles of Life: Innovations in Obstetrics and Gynecology	University Sociocultural Complex Nicolae Testemițanu 25, str., 1 st floor
	08:00-12:00	Scientific session: Unlocking the Body's Secrets: Innovations in Internal Medicine	University Sociocultural Complex Nicolae Testemițanu 25, str., 2 nd floor
	08:00-11:00	Scientific session: Journey into the Body: Physiology and Pathology Unveiled	Aula 15 Blocul didactic nr. 1 „Leonid Cobâleanschi” Nicolae Testemițanu 27, str., basement
	08:00-10:30	Scientific session: Minds Matter: Exploring Innovations in Mental Health	Aula 12 Blocul didactic nr. 1 „Leonid Cobâleanschi” Nicolae Testemițanu 27, str., 1 st floor
	08:00-11:30	Scientific session: Shaping Tomorrow's Health: Innovations in Public Health	Aula 16 Blocul didactic nr. 1 „Leonid Cobâleanschi” Nicolae Testemițanu 27, str., basement

08:00-10:00	Scientific session: Caring for Tomorrow's Leaders: Innovations in Pediatrics	Aula 13 Blocul didactic nr. 1 „Leonid Cobâleanski” Nicolae Testemițanu 27, str., basement
08:00-10:30	Scientific session: Revolutionizing Cancer Care: Innovations in Oncology	Oncologic Institute Nicolae Testemițanu 30
08:00-12:00	Scientific session: Smile Savers: Innovations in Dentistry	University Clinic of Dentistry No. 1 Toma Ciorba 42, str.
08:00-09:00	Keynote: CIURBA ADRIANA (România) <i>Hyaluronic acid in cosmetology: from 3D hydration to applications in facial aesthetic procedures.</i>	Aula 4 Pharmacy Faculty, 3 rd floor Malina Mica 66, str.
09:00-12:00	Scientific session: Pharmacy Frontier: Advancements in Pharmaceutical Sciences	Aula 4 Pharmacy Faculty, 3 rd floor Malina Mica 66, str.
12:00-14:30	Scientific session: Exploring the Brain: Advancements in Neurology and Neurosurgery	University Sociocultural Complex Nicolae Testemițanu 25, str., 3 rd floor
10:30-13:00	Scientific session: Breathe Easy: Advances in Pneumology and Allergology	Aula 13 Blocul didactic nr. 1 „Leonid Cobâleanski” Nicolae Testemițanu 27, str., 1 st floor
11:00-12:00	Lunch break	University Sociocultural Complex Nicolae Testemițanu 25, str., 1 st floor
12:00-15:30	Scientific session: Exploring Fundamental Sciences in Medicine. POSTER.	Blocul Auditorial "Nicolae Esanu" Nicolae Testemițanu 20, str.
14:00-15:00 15:30-16:30	Workshop: Use of Virtual Reality for procedural planning of Transcatheter Aortic Valve Implantation (TAVI)	Training room ASR Nicolae Testemițanu 25, str., basement
14:00-15:00	Keynote: CODRINA ANCUȚA EUGEN ANCUȚA (România) <i>Updated in pregnancy and immune-mediated</i>	University Sociocultural Complex Nicolae Testemițanu 25, str., 1 st floor

		<i>rheumatic disorders</i>	
	13:00-15:30	Workshop: Skin diseases. Dermato-cosmetic preparations. Practical aspects of compounding	Department of Drug Technology Nicolae Testemițanu, 22, str., 2 nd floor
	13:00-15:30	Workshop: Techniques for manufacturing solid pharmaceutical forms containing Rivaroxaban	Department of Drug Technology Nicolae Testemițanu, 22, str., 2 nd floor
	13:00-16:00	Workshop: The pharmacist's role in ensuring the appropriate dosage of medicines for various categories of patients	„Vasile Procopisin” University Pharmaceutical Centre Testemițanu 22, str., 2 nd floor
	13:00-17:00	Workshop: Determination of antibiotic consumption in inpatient and outpatient settings	Blocul didactic nr. 2. Mălina Mică, 66, str.
	13:00-17:00	Workshop: Medicinal plants with volatile oil content in phytotherapy from the cspdpm collection of USMF "Nicolae Testemițanu"	Scientific Practical Centre of Medicinal Plants S. Bardar, Ialoveni
	13:00-17:00	Workshop: Drug interaction between drugs in a single syringe or infusion	Blocul Farmaceutic USMF Malina Mica 66, str., 1 st floor, lab. 116
	14:00-16:00	Workshop: Photodynamic therapy in periodontal disease	Clinica Stomatologică Universitară nr. 1 T. Ciorbă 42., room nr.203
	18:00	Gala Dinner	University Sociocultural Complex Nicolae Testemițanu 25, str., 2 nd floor
27.04. 2024	08:00-10:00	Workshop: Women of Childbearing Age with Immune Mediated Rheumatic Disorders- what is the story and why should we care?	University Sociocultural Complex Nicolae Testemițanu 25, str., 1 st floor
	10:00	Closing Ceremony	University Sociocultural Complex Nicolae Testemițanu 25, str., 3 rd floor
	15:00	Cricova wine tour	Cricova Winery

Keynotes

How to assess Thyroid Nodules

PIUYSH JANI (UK)- MD, Professor, Consultant ENT and Head and Neck Surgeon, Cambridge University Hospital. Anatomy Supervisor, Kings College, Cambridge University, United Kingdom

In the general population, thyroid nodules are found in 5% by palpation and in 50% by ultrasonography (US). Initial evaluation of nodules should include serum thyroid-stimulating hormone measurement, fine-needle aspiration (FNA) biopsy, and US. Thyroid micronodules are being detected with increasing frequency and are currently evaluated by US-FNA. Routine measurement of serum calcitonin and thyroglobulin and FNA rebiopsy are not recommended. Cytologically benign thyroid nodules should be followed rather than treated. Novel treatment options including iodine 131, percutaneous ethanol injection, and percutaneous laser thermal ablation have specific indications, advantages, and adverse effects.

HPV infection- from pathogenesis to genital and oropharyngeal cancers

FURĂU-CRISTIAN GEORGE (România)- MD, PhD, Professor, Department of Biology and Life Sciences, Arad

HPV infection is one of the most frequent infections that can be acquired through sexual intercourse and has been associated with cervical cancer (zur Hausen). Co-testing for cervical cancer as a screening tool will be analyzed. Further research revealed its involvement in other genital cancers, but also in cancers of the head and neck region. The presentation is aimed to present these correlations, but also the preventive action that is required. Anti HPV vaccination and its success will be presented, as well as arguments for gender neutral vaccination.

Hyaluronic Acid in Cosmetology: From 3D Hydration to Applications in Facial Aesthetic Procedures

CIURBA ADRIANA- MD, PhD, Professor, Head of Discipline of Pharmaceutical Technology and Cosmetology, George Emil Palade University of Medicine, Pharmacy, Sciences, and Technology, Târgu Mureș

Hyaluronic acid (HA), an excellent adjuvant for all skin types, is recommended in anti-aging, lifting and rejuvenation treatments due to its ability to provide enhanced moisturization to the skin. The cutaneous penetration optimization of a highly hydrophilic ingredient necessitates innovative solutions that involve the association of various types of chemically or structurally modified HA, thereby providing a multidimensional component of the moisturizing effect. When using crosslinked HA as a temporary dermal filler, its rheological properties play a crucial role.

Non-metallic biomaterial involved in dental prosthetic: from studies to clinical applications

EARAR KAMEL (România)- MD, PhD, University Professor, Head of Prosthetic Implantology Therapy and Oral Rehabilitation Discipline, General Director of the Medical-Pharmacological Research Center „Dunărea de Jos,, University, Vice Dean of International Affairs ERASMUS of „Dunărea de Jos,, University

This keynote is dedicated to exploring and analyzing non-metallic biomaterials used in the field of dental prosthetics. From research studies to clinical applications, participants will have the opportunity to discover new technologies and innovations in dental materials, such as ceramics, composites, and polymers. The keynote will address aspects such as material characteristics, manufacturing methods, composition, and properties, as well as the advantages and limitations in the context of dental practice. Through presentations, demonstrations, and interactive discussions, participants will gain a deeper understanding of the role of non-metallic biomaterials in dental prosthetics and in improving the quality of dental treatments.

Sexual rights and family planning

BODOG ALIN (România)- Associate Professor, University of Oradea, Senior Doctor, Head of Obstetrics and Gynecology Department at Spitalul Pelican, Oradea

FURĂU CRISTIAN-GEORGE (România)- MD, PhD, Professor, Department of Biology and Life Sciences, Arad

This workshop delves into the vital relationship between sexual rights and family planning, examining how both intersect to promote individual autonomy, reproductive health, and overall well-being. Through interactive discussions and expert insights, participants will gain a deeper understanding of the importance of comprehensive sexual education, access to contraception, and the role of policy in supporting reproductive rights. Join us as we navigate the complexities and nuances of this critical area, aiming to empower individuals and communities to make informed choices and advocate for their sexual and reproductive health rights.

The future of respiratory medicine in the era of artificial intelligence

SIAFAKAS NIKOLAOS (Grecia)- MD, Professor of Pneumology, University of Crete, Department of Thoracic Medicine, Greece.

M. ANTONIOU KATERINA (Grecia)- Professor of Respiratory Medicine, Head of European Respiratory Society Assembly 12 Interstitial Lung Disease, Head of Molecular and Cellular Pneumology Lab, Dept of Respiratory Medicine, School of Medicine, University of Crete, European Respiratory Society for early career members

Artificial intelligence (AI) has emerged as a transformative force in the field of medicine, revolutionizing various aspects of healthcare delivery, from diagnosis to treatment and beyond. Through the integration of advanced algorithms, machine learning, and big data analytics, AI is empowering medical professionals with unprecedented insights and capabilities.

The art of inguinal hernia surgery

SANDEEP KAUL (UK)- MD, Professor, FRCS, FEBS, DNB (Surgical Oncology), MS Consultant Colorectal and General Emergency Surgeon, Barking, Havering and Redbridge University NHS Trust, London, United Kingdom.

Presentation includes: Surgical anatomy of myopectineal orifice as well, TIPS & TRICKS in inguinal hernia TAPP technique as well as learning curve with TAPP.

Updated in pregnancy and immune-mediated rheumatic disorders

ANCUȚA CODRINA (România)- MD, PhD, Professor of Rheumatology, UMF „Grigore T.Popa,,

ANCUȚA EUGEN (România)- Senior Scientist, MD, PhD, Obstetrics and Gynecology, România.

Managing patients with rheumatic diseases (RMD) during pregnancy and the postpartum period can be a challenge for both rheumatologists and obstetricians. While disease activity during the course of pregnancy varies with regard to the presence of underlying conditions, maintenance of remission from conception through to delivery increases the chances of an uncomplicated pregnancy. A period of remission of at least 6 months prior to conception increases the chance of a successful conception while decreasing the risk of flares during pregnancy.

Symposium

The impact of the circadian rhythm in contemporary medicine

VOVC VICTOR- MD, PhD, Professor, Department of Human Physiology and Biophysics, *Nicolae Testemitanu* State University of Medicine and Pharmacy, Chisinau, Republic of Moldova

Examination of patients with sleep disorders. Orofacial anomalies as physiopathological mechanisms of sleep-disordered breathing.

LUPUȘOR ADRIAN- PhD, Assistant Professor, Department of Human Physiology and Biophysics, *Nicolae Testemitanu* State University of Medicine and Pharmacy, Chisinau, Republic of Moldova

Orofacial and maxillofacial surgery in the treatment of sleep-disordered breathing

GHETIU ALEXANDRU

Intraoral devices in the treatment of sleep apnea syndrome

BUȘMACHIU ANDREI

How to optimize the circadian rhythm for academic success?

LUPUȘOR ADRIAN- PhD, Assistant Professor, Department of Human Physiology and Biophysics, *Nicolae Testemitanu* State University of Medicine and Pharmacy, Chisinau, Republic of Moldova

Round tables

Approach to cytomegalovirus infection in perinatal medicine

JUNCU VICTOR (România)- MD, Obstetrics and Gynecology

The consequences of congenital CMV infection can vary, from mild symptoms to more serious complications, including neurosensory disorders such as deafness, vision problems, developmental delays, and other disabilities. Therefore, it is important to take preventive measures to prevent CMV infection in pregnant women, but also to prevent infection of the fetus when a pregnant woman is infected. Finally, it is important to carry out appropriate medical monitoring in the event of infection of the fetus and of the child born with congenital CMV infection.

Artificial organs and tissues in transplantation - current affairs and perspectives

NACU VIOREL (Moldova)- MD, PhD, MPH, University Professor Department

Artificial organs are bioengineered devices or tissues that scientists create and integrate into the human body to replace, duplicate, or augment functional, naturally occurring organs. They pose a solution to organ donor shortages, and can also be used as medical training tools.

Surgical technique of Deep Brain Stimulation in Parkinson's Disease

ANDRUȘCA ALEXANDRU (Moldova)- MD, PhD student, Assistant Professor

Deep brain stimulation (DBS) involves implanting electrodes within areas of the brain. The electrodes produce electrical impulses that affect brain activity to treat certain medical conditions. The electrical impulses also can affect cells and chemicals within the brain that cause medical conditions.

Workshops

Medicine

1. *ACADEMY OF RESPIRATORY AND ALLERGIC DISEASES: OBSTRUCTIVE SLEEP APNEA- FROM DIAGNOSIS TO TREATMENT*

Corlăteanu Alexandru- MD, PhD, Professor, Head of Discipline, Pneumology and Allergology Discipline, Department of Internal Medicine, *Nicolae Testemitanu* State University of Medicine and Pharmacy, Chisinau, Republic of Moldova

This workshop is designed to provide participants with a comprehensive understanding of obstructive sleep apnea (OSA), focusing on diagnosis and treatment. Participants will explore diagnostic techniques and criteria, including the use of cardio-respiratory polysomnography, and learn about treatment options, with an emphasis on non-invasive ventilation. Through practical presentations, interactive discussions, and hands-on exercises, the workshop aims to equip participants with practical skills and knowledge that they can apply in managing OSA in daily clinical practice.

2. *ACADEMY OF RESPIRATORY AND ALLERGIC DISEASES: SPIROMETRY – FROM THEORY TO PRACTICE*

Călăraș Diana- MD, PhD, Associate Professor, Pneumology and Allergology Discipline, Department of Internal Medicine, *Nicolae Testemitanu* State University of Medicine and Pharmacy, Chisinau, Republic of Moldova

This event is designed to provide participants with a comprehensive introduction pulmonary functional test, focused on spirometry as well as interpretation of spirometry data. This workshop will provide an opportunity to improve skills and knowledge in this essential area of respiratory medicine. During the workshop, you will learn about the basic principles of spirometry, including the correct techniques for measuring respiratory volume and flow as well as interpreting the results obtained. During practical sessions, you will have the opportunity to work directly with spirometry equipment and become familiar with the process of performing tests and recording data.

3. *ADVANCEMENTS IN RETINAL PATHOLOGY DIAGNOSIS: MULTIMODAL IMAGING TECHNIQUES*

Bendelic Eugeniu- MD, PhD, Professor, Head of Ophtalmology Department, *Nicolae Testemitanu* State University of Medicine and Pharmacy, Chisinau, Republic of Moldova

Moscaliuc Alina

The workshop focuses on the utilization of multimodal imaging techniques in diagnosing and treating retinal pathologies. Participants will explore the integration of various imaging modalities such as optical coherence tomography (OCT), fundus photography, fluorescein angiography, and others to enhance diagnostic accuracy and improve patient care. Through case

studies and hands-on sessions, attendees will gain practical insights into the application of these techniques in clinical practice. Additionally, experts in the field will discuss emerging trends and advancements in retinal imaging, providing attendees with a comprehensive understanding of the current landscape and future directions in this critical area of ophthalmology

4. AT THE INTERSECTION OF MEDICINE AND LAW

Hotineanu Adrian- PhD, Professor, Surgery Department No. 2, *Nicolae Testemitanu* State University of Medicine and Pharmacy, Chisinau, Republic of Moldova

Pisarenco Constantin- PhD, Associate Professor, Free International University of Moldova

General notions in law and how it is framed in medicine by means of legal norms (qualifications, licenses, continuing professional training, the relationship with the public/patients, etc., medical documentation, medical errors).

5. BIRTH SIMULATION: BRIDGING THEORY AND PRACTICE FOR SAFE DELIVERIES

Mitriuc Diana- MD, Associate Professor, Obstetrics, Gynaecology and Human Reproduction Discipline, Obstetrics and Gynaecology Department, *Nicolae Testemitanu* State University of Medicine and Pharmacy, Chisinau, Republic of Moldova.

The workshop provides participants with an interactive and educational experience designed to enhance their skills and understanding in the birthing process. This workshop offers a practical and comprehensive approach to preparing medical professionals for managing safe deliveries. Through a combination of theoretical lectures, interactive discussions, and practical sessions, participants will be guided through a journey that begins with a theoretical understanding of the birthing process and extends to the practical application of knowledge in a simulated environment.

6. BRONCHOSCOPY: NAVIGATING THE AIRWAYS FOR DIAGNOSTIC INSIGHT

Munteanu Oxana- MD, PhD, Associate Professor, Pneumology and Allergology Discipline, Department of Internal Medicine, *Nicolae Testemitanu* State University of Medicine and Pharmacy, Chisinau, Republic of Moldova

The "Bronchoscopy: Navigating the Airways for Diagnostic Insight" workshop provides participants with the opportunity to learn and improve their skills in using bronchoscopy for the diagnosis and management of respiratory conditions. This workshop is designed for specialists in pulmonology, thoracic surgery, anesthesia, and other related specialties who use bronchoscopy in their clinical practice. Participants will explore the principles and techniques of bronchoscopy, including patient preparation, bronchoscope insertion techniques, and manipulation within the airways. They will learn about the indications and contraindications of the procedure, as well as the identification and management of potential complications.

7. CONTEMPORARY DIAGNOSTIC OPTIONS IN HEMATOLOGY

Musteață Vasile- PhD, Associate Professor, Hematology Discipline, Department of Internal Medicine, *Nicolae Testemitanu* State University of Medicine and Pharmacy, Chisinau, Republic of Moldova

The workshop will address the laboratory diagnostic options with an immunological and molecular-genetic profile, which come to complete all investigations aimed at ensuring the process of specialized curative and preventive medical assistance for patients with benign and malignant hemopathies.

8. CORONARY ANGIOGRAPHY: EXPLORING THE ARTERIAL HIGHWAYS OF THE HEART

Abraș Marcel- MD, PhD, Associate Professor, Discipline of Cardiology, Department of Internal Medicine, *Nicolae Testemitanu* State University of Medicine and Pharmacy, Chisinau, Republic of Moldova

The Workshop on Coronary Angiography offers an immersive learning experience designed to enhance participants' understanding and proficiency in this essential diagnostic procedure. This workshop provides a comprehensive overview of the principles, techniques, and clinical applications of coronary angiography. Through a combination of didactic lectures, case discussions, and hands-on practice sessions, participants will learn how to perform coronary angiography effectively and interpret angiographic images accurately. The workshop covers various aspects of the procedure, including patient selection, vascular access, catheter manipulation, contrast administration, and image acquisition.

9. DEVELOPING EMPATHY FOR THE AGING PROCESS

Șalaru Virginia- MD, Associate Professor, Department of Family Medicine, *Nicolae Testemitanu* State University of Medicine and Pharmacy, Chisinau, Republic of Moldova

During the workshop, participants will have the opportunity to experiment with certain changes in the sensory organs and musculoskeletal system caused by aging. Losing some abilities makes us vulnerable and susceptible to more risks, which can be underestimated when we are in good health. Simple tasks like buttoning a shirt, signing a form, or using a mobile phone become a real challenge. Only by understanding the transformations that a person undergoes in the aging process do we become more empathetic towards our patients, relatives, parents, and become better professionals.

10. DIAGNOSTIC MODERN CONTRACEPTIVE METHODS IN GYNECOLOGY: ADVANCEMENTS AND APPLICATIONS

Catrinici Rodica- MD, PhD, Associate Professor, Obstetrics, Gynaecology and Human Reproduction Discipline, Obstetrics and Gynaecology Department, *Nicolae Testemitanu* State University of Medicine and Pharmacy, Chisinau, Republic of Moldova.

The Workshop on Diagnostic Methods in Gynecology offers a comprehensive learning experience designed to enhance participants' understanding and proficiency in the diagnostic

techniques used in the field of gynecology. This workshop provides an in-depth exploration of various diagnostic modalities and their applications in the evaluation and management of gynecological conditions. Through a combination of didactic lectures, interactive discussions, and hands-on practical sessions, participants will gain practical insights into the use of diagnostic tools such as ultrasound imaging, colposcopy, hysteroscopy, and cytology. The workshop will cover the principles of each diagnostic method, indications for their use, interpretation of findings, and implications for patient care.

11. ELECTROCARDIOGRAPHIC CHANGES IN RARE SYNDROMES

Grejdieru Alexandra- MD, PhD, Associate Professor, Discipline of Cardiology, Department of Internal Medicine, *Nicolae Testemitanu* State University of Medicine and Pharmacy, Chisinau, Republic of Moldova

Ceasovschih Alexandr- MD, Assistant Professor, Grigore T. Popa University of Medicine and Pharmacy, Iasi, Romania

Electrocardiographic changes in rare Syndromes. We will present 5 Syndromes that present ischemia with different EKG changes: De Winter, Kounis, Wellens, Yamaguci, Takotsubo and 4 syndromes causing arrhythmias: Brugada, WPW; LGL and Mahaim.

12. ENHANCING RATIONAL USE OF MEDICINES (RUM) SKILLS

Podgurschi Lilia- MD, PhD, Associate Professor, Department of Pharmacology and Clinical Pharmacology, *Nicolae Testemitanu* State University of Medicine and Pharmacy, Chisinau, Republic of Moldova

The "Enhancing Rational Drug Use Skills" workshop is designed to help participants improve their skills in the rational use of medications. This workshop provides an interactive and educational platform where participants will learn fundamental principles and practices for the efficient and appropriate use of medications. Topics covered include identifying and evaluating drug information, correctly interpreting medical prescriptions, recognizing and managing potential side effects of medications, as well as promoting effective communication between patients and healthcare professionals. Through presentations, practical exercises, and case studies, participants will be encouraged to reinforce their knowledge and develop practical skills to make informed and rational choices regarding medication use. The ultimate goal of the workshop is to enhance participants' competence and confidence in the proper management of medication treatment, thereby contributing to the improvement of healthcare quality and outcomes for patients.

13. FAST USG: UNVEILING THE POWER OF RAPID ULTRASOUND ASSESSMENT IN TRAUMA CARE

Sărătilă Iurie

The "FAST USG: Unveiling the Power of Rapid Ultrasound Assessment in Trauma Care" workshop offers participants an immersive learning experience focused on understanding and utilizing rapid ultrasound assessment in trauma care. This workshop is tailored for healthcare

professionals, particularly those involved in emergency medicine, trauma surgery, and critical care, who seek to enhance their skills in utilizing ultrasound for rapid assessment in trauma settings. Participants will delve into the principles and techniques of FAST (Focused Assessment with Sonography for Trauma) ultrasound, covering topics such as image acquisition, interpretation, and clinical applications.

14. GASTRIC SUTURING MASTERY: TECHNIQUES FOR SURGICAL SUCCESS

Șchiopu Victor- PhD, Assistant Professor, Department of Oncology, *Nicolae Testemitanu* State University of Medicine and Pharmacy, Chisinau, Republic of Moldova

This workshop provides participants with the opportunity to learn and practice essential techniques for gastric suturing in a hands-on environment. Through interactive sessions and practical demonstrations, participants will learn the fundamental principles of gastric suturing and will be guided in applying them on simulated models. Experienced instructors will offer individualized guidance to ensure each participant acquires the necessary skills to perform gastric sutures efficiently and safely. This valuable hands-on experience is essential for resident physicians, surgeons in training, and any medical professional looking to enhance their skills in gastric surgery.

15. HEART IN HAND: AN INTERACTIVE CARDIAC DISSECTION WORKSHOP

Mazur-Nicorici Lucia- MD, PhD, Professor, Discipline of Cardiology, Department of Internal Medicine, *Nicolae Testemitanu* State University of Medicine and Pharmacy, Chisinau, Republic of Moldova

Participation in the workshop will provide step-by-step instruction on how to perform the anatomical dissection of the heart, allowing participants to explore the structural secrets of the heart under the guidance of trainers. Through fine incisions, they will observe a new perspective on the anatomy of the heart.

16. INSIGHT INTO THE EYES: EXPLORING OPHTHALMOSCOPY FOR DIAGNOSTIC PRECISION

Dumbraveanu Lilia- MD, PhD, Associate Professor, Department of Ophthalmology-Optometry, *Nicolae Testemitanu* State University of Medicine and Pharmacy, Chisinau, Republic of Moldova

The "Insight into the Eyes: Exploring Ophthalmoscopy for Diagnostic Precision" workshop offers participants the opportunity to understand and improve their skills in using ophthalmoscopy for the diagnosis and management of eye conditions. This workshop is intended for ophthalmologists, ophthalmology residents, and other healthcare professionals who wish to enhance their knowledge in eye examination. Participants will be guided through an exploration journey of ophthalmoscopy techniques, starting from basic concepts and proper ophthalmoscope usage techniques to interpreting results and diagnosing various eye conditions. They will learn to recognize the characteristic signs and symptoms of common eye conditions such as diabetic retinopathy, macular degeneration, and glaucoma.

17. LAPAROSCOPIC ESSENTIALS: MASTERING FUNDAMENTAL MANEUVERS

Butnari Valentin

This workshop is designed to provide participants with a detailed and practical understanding of the fundamental maneuvers used in laparoscopic surgery. Participants will have the opportunity to learn and practice essential techniques such as the insertion and manipulation of laparoscopic instruments, tissue mobilization, precise dissection, and suturing in a laparoscopic environment. The workshop is intended for both trainee surgeons and experienced surgeons looking to enhance their skills in laparoscopic surgery. By participating in this workshop, they will have the opportunity to solidify their knowledge and gain confidence in performing essential laparoscopic maneuvers, thereby contributing to the improvement of surgical practice and patient outcomes.

18. LAPAROSCOPY UNVEILED: IMMERSIVE SIMULATION FOR SURGICAL SKILL ENHANCEMENT

Ferbeii Ivan

The "Laparoscopy Unveiled: Immersive Simulation for Surgical Skill Enhancement" workshop offers participants an immersive learning experience aimed at enhancing their skills in laparoscopic surgery. This workshop is designed for surgeons, surgical residents, and medical professionals seeking to improve their proficiency in minimally invasive surgical techniques. Participants will engage in hands-on simulation exercises using laparoscopic training models and virtual reality simulators. Under the guidance of experienced faculty, they will learn and practice essential laparoscopic skills such as camera navigation, tissue manipulation, dissection, suturing, and knot tying.

19. LIFESAVER WORKSHOP: BASIC LIFE SUPPORT AND DEFIBRILLATION TRAINING

Savca Dumitru

The LifeSaver workshop on CPR and Defibrillation is a hands-on training session designed to equip participants with life-saving skills in cardiopulmonary resuscitation (CPR) and the use of automated external defibrillators (AEDs). This workshop aims to empower individuals to respond effectively in emergency situations and potentially save lives. Through interactive demonstrations, practical exercises, and simulated scenarios, participants will learn the principles and techniques of CPR, including chest compressions, rescue breaths, and the use of AEDs. They will have the opportunity to practice these skills on manikins under the guidance of experienced instructors, allowing them to gain confidence and proficiency in performing CPR and using AEDs.

20. MANAGEMENT OF MYOPIA: FROM THEORY TO PRACTICE

Bîlbă Rodica

This workshop provides participants with the opportunity to gain a deeper understanding of myopia and explore strategies for managing it, moving from theoretical knowledge to practical application. Within this event, participants will be guided on a journey into the world of myopia, from underlying mechanisms to treatment and management options. We will explore the latest research and technologies available in the field and discuss practical ways to apply them in a clinical context. Our experienced trainers will provide relevant case studies and share best practices for effectively managing myopia in clinical practice. This workshop offers an ideal opportunity for professionals in ophthalmology and optometry to enhance their skills and expand their knowledge in an area of great relevance and timeliness.

21. MASTERING AIRWAY MANAGEMENT: TECHNIQUES, TIPS, AND TROUBLESHOOTING

Ursu Cornel- MD, Assistant Professor, Valeriu Ghereg Anesthesiology and Resuscitation Department No.1, *Nicolae Testemitanu* State University of Medicine and Pharmacy, Chisinau, Republic of Moldova

This workshop is designed to provide participants with a comprehensive understanding and practical skills in managing airways effectively. This workshop is essential for healthcare professionals, particularly those working in emergency medicine, anesthesia, intensive care, and pre-hospital care, where efficient airway management is crucial for patient outcomes. The workshop covers a wide range of topics, including basic airway anatomy and physiology, assessment of airway difficulties, selection and use of appropriate airway devices, techniques for airway establishment (such as intubation, supraglottic airway insertion, and surgical airway), and management of airway emergencies and complications.

22. MASTERING THE ART OF KNOTS AND SUTURES: A PRACTICAL WORKSHOP FOR SURGICAL PRECISION

Chior Pavel

This workshop offers participants a comprehensive learning experience in the art of knots and sutures. Participants will delve into the theory and practical application of various types of knots and sutures commonly used in surgical and medical settings. Through hands-on practice sessions, participants will develop proficiency in tying different types of knots and executing various suturing techniques on simulated models. Experienced instructors will provide step-by-step guidance and valuable tips to ensure participants grasp the principles and master the skills necessary for effective knot tying and suturing. Whether you are a medical student, resident physician, or practicing healthcare professional, this workshop provides an invaluable opportunity to enhance your surgical skills and proficiency in wound closure techniques.

23. MASTERING TUBES AND CATHETERS INSERTIONS: PRACTICAL WORKSHOP FOR MEDICAL PROFESSIONALS

Culiuc Vasile- MD, Associate Professor, General Surgery-Semiology Department No. 3, *Nicolae Testemitanu* State University of Medicine and Pharmacy, Chisinau, Republic of Moldova

Cumpătă Serghei- MD, Assistant Professor, General Surgery-Semiology Department No. 3, *Nicolae Testemitanu* State University of Medicine and Pharmacy, Chisinau, Republic of Moldova

This workshop provides comprehensive training on the insertion of catheters and tubes, covering both theory and hands-on practice. Participants will learn essential techniques for safely and effectively inserting various types of catheters and tubes, including central venous catheters, urinary catheters, and chest tubes. Through interactive sessions, participants will gain a thorough understanding of the anatomy, indications, contraindications, and complications associated with catheter and tube insertion. Experienced instructors will demonstrate best practices and provide personalized guidance to ensure participants develop the necessary skills and confidence to perform these procedures competently. Whether you are a novice or experienced healthcare professional, this workshop offers valuable insights and practical knowledge essential for delivering high-quality patient care.

24. OPTIMIZING CESAREAN SECTIONS: EXPLORING THE VEJNOVICI TECHNIQUE

Furău Cristian-George- MD, PhD, Professor, Department of Biology and Life Sciences, Arad

The Vejnovic Cesarean Section Suturing Technique is a method used by obstetric surgeons during cesarean section procedures to close the incisions made in the uterus and abdominal wall. This technique is named after the surgeon who developed it, and it aims to achieve optimal wound closure with minimal risk of complications. In the Vejnovic technique, special attention is paid to the meticulous alignment of tissue layers to promote proper healing and reduce the risk of post-operative complications such as wound dehiscence or infection. The suturing process involves careful placement of stitches in multiple layers of tissue, including the uterine muscle, fascia, and skin, using absorbable sutures. One of the key features of the Vejnovic technique is the use of continuous locking sutures, which provide a secure closure while minimizing tissue trauma and improving cosmesis. Additionally, this technique allows for precise control over tissue tension and alignment, resulting in improved wound healing outcomes.

25. SAFE LAPAROSCOPIC CHOLECYSTECTOMY

Pisarenco Sergiu- PhD, Associate Professor, Surgery Department No. 2, *Nicolae Testemitanu* State University of Medicine and Pharmacy, Chisinau, Republic of Moldova

It is designed to provide participants with the knowledge and skills necessary to perform laparoscopic cholecystectomies safely and efficiently. Participants will learn about current techniques and strategies aimed at reducing the risks and complications associated with this surgical procedure. Through interactive presentations, practical demonstrations, and exercises on anatomical models, participants will have the opportunity to improve their technique and learn methods for managing potential complications. The aim of this workshop is to provide a safe and stimulating environment for the development of surgical skills and for improving surgical outcomes for patients.

26. SAVING LIVES STARTS WITH YOU: "AUTOMATED EXTERNAL DEFIBRILATION"

Moşneguţu Sergiu

Pelevaniuc Artemie

27. SPECIFICITIES IN IMAGING DIAGNOSIS OF RARE FRACTURES OF THE RADIOCARPAL JOINT IN CHILDREN

Cucurudza Nicolae

This workshop aims to provide participants with specialized knowledge and skills in diagnosing uncommon fractures affecting the radiocarpal joint in pediatric patients. Participants will explore the nuances of imaging techniques, including X-rays, CT scans, and MRI, in identifying and accurately diagnosing these rare fractures. Through case presentations, interactive discussions, and hands-on practice, participants will enhance their ability to recognize and interpret radiographic findings associated with rare fractures of the radiocarpal joint in children. This workshop is designed to improve the diagnostic accuracy and confidence of healthcare professionals involved in pediatric musculoskeletal imaging, ultimately leading to better patient outcomes.

28. SURGICAL TREATMENT OF INFECTED AND CHRONIC WOUNDS

Pisarenco Sergiu- PhD, Associate Professor, Surgery Department No. 2, *Nicolae Testemitanu* State University of Medicine and Pharmacy, Chisinau, Republic of Moldova

This workshop is designed to provide participants with a comprehensive understanding of the strategies and techniques used in the surgical management of this type of wounds. Participants will explore various aspects of surgical wound management, including proper assessment and diagnosis, selection of appropriate surgical interventions, and adequate suturing techniques. Through interactive presentations, practical demonstrations, and case studies, participants will have the opportunity to learn efficient surgical approaches to successfully treat infected and chronic wounds. The aim of this workshop is to enhance participants' surgical skills and to encourage the exchange of knowledge and experience in this critical area of medical practice.

29. THE CURRENT UPDATES IN IMAGING DIAGNOSIS OF PEDIATRIC MEDICAL EMERGENCIES

Cepoida Irina

30. THE EFFICACY AND SAFETY OF ANTIHYPERTENSIVE MEDICATIONS IN PATIENTS BASED ON GENDER

Bacinschi Nicolae- MD, PhD, Professor, Head of Department of Pharmacology and Clinical Pharmacology, *Nicolae Testemitanu* State University of Medicine and Pharmacy, Chisinau, Republic of Moldova

It is designed to explore and discuss the effects of various antihypertensive medications on patients, considering gender differences. This workshop provides participants with the opportunity to better understand how antihypertensive treatments may interact differently with patients' bodies depending on their gender.

31. THE HOLISTIC APPROACH IN ONCOLOGY CARE

Șchiopu Victor- PhD, Assistant Professor, Department of Oncology, *Nicolae Testemitanu* State University of Medicine and Pharmacy, Chisinau, Republic of Moldova

The workshop aims to focus on an integrated and holistic approach to oncology patient care. Participants will learn to understand not only the medical aspects of the disease, but also the psychological, social and emotional impact of cancer on patients. The topics discussed in the workshop are: Empathic Communication: How to communicate effectively and empathetically with cancer patients and their families; Managing Stress and Burnout: How to cope with the stress of caring for oncology patients and how to prevent burnout in the medical field; Psychological Support: The importance of psychological support for cancer patients and ways to provide it; Nutrition and Lifestyle: The role of nutrition and healthy lifestyle in supporting patients during treatment and recovery; Rehabilitation and Quality of Life: How to improve the quality of life of cancer patients through rehabilitation programs and appropriate support.

32. THE LEVEL OF MICROBIAL CONTAMINATION OF OBJECTS BEFORE AND AFTER THE USE OF VARIOUS ANTISEPTIC AGENTS

Lozan-Tîrșu Carolina- PhD, Associate Professor, Microbiology and Immunology Discipline, Department of Preventive Medicine, *Nicolae Testemitanu* State University of Medicine and Pharmacy, Chisinau, Republic of Moldova

The purpose of the workshop „The degree of microbial contamination of objects before and after the use of various agents with antiseptic properties” is to evaluate the effectiveness of antiseptic substances used in medical practice before and after the treatment of various objects and hands.

33. USE OF VIRTUAL REALITY FOR PROCEDURAL PLANNING OF TRANSCATHETER AORTIC VALVE IMPLANTATION (TAVI)

Abraș Marcel- MD, Associate Professor, Discipline of Cardiology, Department of Internal Medicine, *Nicolae Testemitanu* State University of Medicine and Pharmacy, Chisinau, Republic of Moldova

Cazacu Anatolie

Ștefan Speianu

Virtual reality (VR) is a computer-generated environment perceived through a headset device. From the imaging obtained with the CT angiography in a DICOM format, we built a virtual

model with software Elucis (Realize Medical, Ottawa, Canada) that contains all the clinical information of the patients and a virtualized model of their anatomy. The VR has the ability to ‘transport the user inside the human body’ and provides an unlimited view of anatomy from every angle in an immersive experience with high fidelity and accuracy. The goal of this workshop is to show the utility of VR in individualized scenarios for TAVI planning.

34. WOMEN OF CHILDBEARING AGE WITH IMMUNE MEDIATED RHEUMATIC DISORDERS- WHAT IS THE STORY AND WHY SHOULD WE CARE?

Ancuța Codrina- MD, PhD, Professor of Rheumatology, UMF „Grigore T.Popa,, and MD, PhD, MSC, Researcher I Professor, Obstetrics and Gynecology.

Ancuta Eugen- Senior Scientist, MD, PhD, Obstetrics and Gynecology, România.

The story of women of childbearing age with immune-mediated rheumatic disorders is one of unique challenges, resilience, and the importance of specialized care. These disorders, such as rheumatoid arthritis, systemic lupus erythematosus, and others, not only affect the women who live with them but also intersect with their reproductive health. For these women, managing their condition becomes more complex due to the potential impact on fertility, pregnancy, and the health of both the mother and the baby. Immune-mediated rheumatic disorders can affect fertility through various mechanisms, including the disease process itself, medications used to manage the condition, and associated comorbidities. Pregnancy presents additional considerations and risks. Women with these disorders may experience fluctuations in disease activity during pregnancy, with potential implications for both maternal and fetal health. Additionally, certain medications commonly used to manage rheumatic disorders may need to be adjusted or discontinued during pregnancy to minimize potential harm to the developing fetus. The story of these women underscores the need for comprehensive.

Pharmacy

1. SKIN DISEASES. DERMATO-COSMETIC PREPARATIONS. PRACTICAL ASPECTS OF COMPOUNDING.

Ciobanu Nicolae- PhD, Associate Professor, Department of Drug Technology, *Nicolae Testemitanu* State University of Medicine and Pharmacy, Chisinau, Republic of Moldova

Guranda Diana- PhD, Associate Professor, Department of Drug Technology, *Nicolae Testemitanu* State University of Medicine and Pharmacy, Chisinau, Republic of Moldova

Ciobanu Cristina- PhD, Associate Professor, Department of Drug Technology, *Nicolae Testemitanu* State University of Medicine and Pharmacy, Chisinau, Republic of Moldova

Solonari Rodica- PhD, Assistant Professor, Department of Drug Technology, *Nicolae Testemitanu* State University of Medicine and Pharmacy, Chisinau, Republic of Moldova

Dobrin Iulia- PhD, Assistant Professor, Department of Drug Technology, *Nicolae Testemitanu* State University of Medicine and Pharmacy, Chisinau, Republic of Moldova

Familiarization of students with domestic and imported dermato-cosmetic preparations, currently present in pharmacies in the Republic of Moldova, used to treat skin diseases. Knowledge of dermato-preparations from the "Vasile Procopișin" University Pharmaceutical Center and preparation of soft magistral pharmaceutical forms, according to the prescriptions of doctors from medical institutions in the country.

2. TECHNIQUES FOR MANUFACTURING SOLID PHARMACEUTICAL FORMS CONTAINING RIVAROXABAN

Halabi Abdalah- PhD student, Department of Drug Technology, *Nicolae Testemitanu* State University of Medicine and Pharmacy, Chisinau, Republic of Moldova

Znagovan Alexandru- PhD, Associate Professor, Department of Drug Technology, *Nicolae Testemitanu* State University of Medicine and Pharmacy, Chisinau, Republic of Moldova

Mihail Anton- PhD student, Associate Professor, Department of Drug Technology, *Nicolae Testemitanu* State University of Medicine and Pharmacy, Chisinau, Republic of Moldova

Topchin Rodica- PhD student, Department of Drug Technology, *Nicolae Testemitanu* State University of Medicine and Pharmacy, Chisinau, Republic of Moldova

Acquiring laboratory techniques for the preparation of tablets and hard gelatin capsules containing rivaroxaban. Argumentation of the selection of auxiliary substances resulting from the physico-chemical properties of the active substance and the manufacturing method.

3. THE PHARMACIST'S ROLE IN ENSURING THE APPROPRIATE DOSAGE OF MEDICINES FOR VARIOUS CATEGORIES OF PATIENTS

Adauji Stela- PhD, Associate Professor, Vasile Procopisin Department of Social Pharmacy, *Nicolae Testemitanu* State University of Medicine and Pharmacy, Chişinău, Republic of Moldova

Students of the Faculty of Pharmacy, study years III, IV, V, and residents will study the concept of therapeutic dose in more detail which is an important element in the rational use of the drug in outpatient settings, predominantly of medicines that are indicated for risk categories of patients, such as children. The workshop focuses on the presentation of the methods for calculating the doses by the patient's characteristics, which will be put into practice in the form of case studies.

4. DETERMINATION OF ANTIBIOTIC CONSUMPTION IN INPATIENT AND OUTPATIENT SETTINGS

Scutari Corina- MD, Associate Professor, Head of Department of Pharmacology and Clinical Pharmacy, *Nicolae Testemitanu* State University of Medicine and Pharmacy of the Republic of Moldova

Bodrug Elena- MD, PhD, Associate Professor, Head of Department of Pharmacology and Clinical Pharmacy, *Nicolae Testemitanu* State University of Medicine and Pharmacy of the Republic of Moldova

Peredelcu Rodica- MD, PhD, Assistant Professor, Head of Department of Pharmacology and Clinical Pharmacy, *Nicolae Testemitanu* State University of Medicine and Pharmacy of the Republic of Moldova

Macari Doina- MD, PhD student, Assistant Professor, Head of Department of Pharmacology and Clinical Pharmacy, *Nicolae Testemitanu* State University of Medicine and Pharmacy of the Republic of Moldova

Sorina Nicolai- MD, Assistant Professor, Head of Department of Pharmacology and Clinical Pharmacy, *Nicolae Testemitanu* State University of Medicine and Pharmacy of the Republic of Moldova

Eleni Vladimir- MD, PhD student, Assistant Professor, Head of Department of Pharmacology and Clinical Pharmacy, *Nicolae Testemitanu* State University of Medicine and Pharmacy of the Republic of Moldova

The workshop will teach the methodology for calculating antibiotic consumption, using as a tool: the DDD (Defined Daily Dose), which is the standard unit of measurement recommended by the World Health Organization for research studies on drug use. Knowledge of this methodology is imperative, as pharmacists are integral to the accurate calculation and application of Defined Daily Doses. Their involvement in drug information management, collaboration with healthcare providers, monitoring of medication utilization, and commitment to quality assurance contribute to the reliability and usefulness of DDD data in healthcare settings.

5. MEDICINAL PLANTS WITH VOLATILE OIL CONTENT IN PHYTOTHERAPY FROM THE CŞPDPM COLLECTION OF USMF "NICOLAE TESTEMIȚANU"

Calalb Tatiana- PhD, Professor, Department of Pharmacognosy and Pharmaceutical Botany, *Nicolae Testemitanu* State University of Medicine and Pharmacy of the Republic of Moldova

Cojocaru-Toma Maria- PhD, Associate Professor, Department of Pharmacognosy and Pharmaceutical Botany, *Nicolae Testemitanu* State University of Medicine and Pharmacy of the Republic of Moldova

Benea Anna- PhD, Assistant Professor, Department of Pharmacognosy and Pharmaceutical Botany, *Nicolae Testemitanu* State University of Medicine and Pharmacy of the Republic of Moldova

Ohindovschi Angelica- PhD student, Assistant Professor, Department of Pharmacognosy and Pharmaceutical Botany, *Nicolae Testemitanu* State University of Medicine and Pharmacy of the Republic of Moldova

Fursenco Cornelia- PhD student, Assistant Professor, Department of Pharmacognosy and Pharmaceutical Botany, *Nicolae Testemitanu* State University of Medicine and Pharmacy of the Republic of Moldova

Grăjdieru Stela- Superior Laborant

Pompuș Irina

Medicinal plants with essential oils in phytotherapy from the collection of the SPCMP of the Nicolae Testemitanu SUMPh - aims to familiarize students with the diversity of species rich in essential oils from the collection of the Scientific Practical Center of Medicinal Plants of the Nicolae Testemitanu SUMPh, with the techniques of harvesting, identification of plant products and obtaining infusions rich in essential oils. At the same time, an assortment of essential oils will be analysed according to organoleptic characteristics (colour, odour, transparency, taste); determination of numerical indices (refractive index) according to pharmacopoeia requirements. The extraction techniques of essential oils and phytotherapeutic products will be evaluated.

6. DRUG INTERACTION BETWEEN DRUGS IN A SINGLE SYRINGE OR INFUSION

Uncu Livia- PhD, Associate Professor, Department of Pharmaceutical and Toxicological Chemistry, "*Nicolae Testemitanu*" State University of Medicine and Pharmacy, Chisinau, Republic of Moldova

Mazur Ecaterina- PhD student, Assistant Professor, Department of Pharmaceutical and Toxicological Chemistry, "*Nicolae Testemitanu*" State University of Medicine and Pharmacy, Chisinau, Republic of Moldova

It is often tempting to mix two or more drugs in one syringe or one vial. Incompatibility of drugs when mixed is often detected due to gas formation or color detection. Nutrient incompatibilities between drugs are dangerous. Knowledge of the facts of the chemical composition of the product, the specific acid-base balance associated with ionization/non-ionization and water solubility, as well as the results of pH measurements and chemical ranges established in USP monographs and product labels provides the basis for drug incompatibility examination.

Stomatology

1. COMPLEX MULTIDISCIPLINARY TREATMENT FOR PATIENTS WITH TEMPORO-MANDIBULAR DISORDERS

Fala Valeriu- PhD, Professor, Corresponding member of Academy of Sciences of the Republic of Moldova, Head of Department of Therapeutic Stomatology, *Nicolae Testemitanu* State University of Medicine and Pharmacy, Chisinau, Republic of Moldova

Bordeniuc Gheorghe- PhD, Assistant Professor, Department of Therapeutic Stomatology, *Nicolae Testemitanu* State University of Medicine and Pharmacy, Chisinau, Republic of Moldova

Gavriliuc Pavel- MD, PhD, Assistant Professor, Neurology Department No. 1, *Nicolae Testemitanu* State University of Medicine and Pharmacy, Chisinau, Republic of Moldova

Cebotari Vasile- kineitherapist, Assistant Professor, State University of Physical Education and Sport

Temporomandibular disorders are one of the most widespread orofacial pain disorders globally. An efficient management of these disorders implies a multidisciplinary collaboration between different medical specialties, at the diagnosis stage, as well for treatment planning and execution. Modern approaches require the standardization of diagnostic stages, the execution of additional diagnostic investigations based on clinical needs (degree and extent of symptom expression), as well as the development of sequential and staged multidisciplinary treatment plan (Theoretical presentation, Powerpoint). Practical demonstration – clinical exam (DC/TMD protocol), additional posturological and electromyographical exam. Demonstration of stages of functional-instrumental diagnosis for executing reversible occlusal therapy (occlusal splints). Each participant will do a practical clinical exam according to DC/TMD protocol.

2. MORPHOFUNCTIONAL RESTORATION OF THE APPROXIMAL SURFACES OF THE LATERAL GROUP OF TEETH

Ababii Victoria- MD, Assistant Professor, Sofia Sîrbu Department of Odontology, Periodontology and Oral Pathology, *Nicolae Testemitanu* State University of Medicine and Pharmacy, Chisinau, Republic of Moldova

Marcu Diana- MD, Associate Professor, Sofia Sîrbu Department of Odontology, Periodontology and Oral Pathology, *Nicolae Testemitanu* State University of Medicine and Pharmacy, Chisinau, Republic of Moldova

Ciobanu Sergiu- MD, PhD, Professor, Sofia Sîrbu Department of Odontology, Periodontology and Oral Pathology, *Nicolae Testemitanu* State University of Medicine and Pharmacy, Chisinau, Republic of Moldova

Gorea Corneliu- MD, Assistant Professor, Sofia Sîrbu Department of Odontology, Periodontology and Oral Pathology, *Nicolae Testemitanu* State University of Medicine and Pharmacy, Chisinau, Republic of Moldova

Theoretical presentation of the principles of morphofunctional restoration of approximal surfaces of the lateral group of teeth (PowerPoint). Practical demonstration on typodont – restoration of interdental anatomy and contact area on the lateral group of teeth. Performing the procedure by each participant on the typodont. Question and answer session, summary discussions by the coordinator.

3. PHOTODYNAMIC THERAPY IN PERIODONTAL DISEASE

Ciobanu Sergiu- MD, PhD, Professor, Sofia Sîrbu Department of Odontology, Periodontology and Oral Pathology, *Nicolae Testemitanu* State University of Medicine and Pharmacy, Chisinau, Republic of Moldova

Chetrus Viorica- MD, Associate Professor, Sofia Sîrbu Department of Dentistry, Periodontology and Oral Pathology, *Nicolae Testemitanu* State University of Medicine and Pharmacy, Chisinau, Republic of Moldova

Cucu Dragoş- MD, Assistant Professor, Sofia Sîrbu Department of Dentistry, Periodontology and Oral Pathology, *Nicolae Testemitanu* State University of Medicine and Pharmacy, Chisinau, Republic of Moldova

Musteață Olesea- MD, Assistant Professor, Sofia Sîrbu Department of Dentistry, Periodontology and Oral Pathology, *Nicolae Testemitanu* State University of Medicine and Pharmacy, Chisinau, Republic of Moldova

Theoretical presentation of the technology of photodynamic therapy, description of the "Helbo" laser device, parameters, effects, advantages of the technology, steps of the actual procedure (PowerPoint). Practical demonstration on Perio typodont. Performing the procedure by each participant on a Perio typodont. Questions and answers session, summary discussions by the coordinator.

4. PREVENTION METHODS OF DENTAL CARIES IN DIFFERENT CLINICAL SITUATIONS

Stepco Elena- MD, PhD, Associate Professor, „Ion Lupan" Department of Pediatric Oral-Maxillofacial Surgery and Pedodontics, *Nicolae Testemițanu* State University of Medicine and Pharmacy, Chisinau, Republic of Moldova

Bâlțeanu Olga- MD, PhD, Assistant Professor, „Ion Lupan" Department of Pediatric Oral-Maxillofacial Surgery and Pedodontics, *Nicolae Testemițanu* State University of Medicine and Pharmacy, Chisinau, Republic of Moldova

Carabulea Gabriela- MD, PhD, Assistant Professor, „Ion Lupan" Department of Pediatric Oral-Maxillofacial Surgery and Pedodontics, *Nicolae Testemițanu* State University of Medicine and Pharmacy, Chisinau, Republic of Moldova

Sîrbu Irina- MD, PhD, Assistant Professor, „Ion Lupan" Department of Pediatric Oral-Maxillofacial Surgery and Pedodontics, *Nicolae Testemițanu* State University of Medicine and Pharmacy, Chisinau, Republic of Moldova

The workshop "Methods of Dental Caries Prevention in Various Clinical Situations" provides participants with the opportunity to learn effective preventive strategies tailored to different situations encountered in dental practice. By exploring mechanisms and risk factors, participants will develop practical skills in applying prevention techniques, thereby contributing to improving oral health within the community.

5. ROOT CANAL OBTURATION USING DIFFERENT TECHNIQUES

Roman Ion- MD, Associate Professor, Sofia Sîrbu Department of Dentistry, Periodontology and Oral Pathology, *Nicolae Testemitanu* State University of Medicine and Pharmacy, Chisinau, Republic of Moldova

Ciobanu Sergiu- MD, PhD, Professor, Sofia Sîrbu Department of Odontology, Periodontology and Oral Pathology, *Nicolae Testemitanu* State University of Medicine and Pharmacy, Chisinau, Republic of Moldova

Eni Lidia- MD, Associate Professor, Sofia Sîrbu Department of Dentistry, Periodontology and Oral Pathology, *Nicolae Testemitanu* State University of Medicine and Pharmacy, Chisinau, Republic of Moldova

Călin Pavel- MD, Assistant Professor, Sofia Sîrbu Department of Dentistry, Periodontology and Oral Pathology, *Nicolae Testemitanu* State University of Medicine and Pharmacy, Chisinau, Republic of Moldova

Theoretical presentation of the techniques of mechanical and medicinal processing of root canals with subsequent obturation using different techniques, description of the Thermafill technique, (PowerPoint). Practical demonstration on typodont – ENDO. Performing the procedure by each participant on a typodont – ENDO. Question and answer session, summary discussions by the coordinator.

6. TECHNIQUES FOR DENTAL IMPLANT INSERTION AND ESSENTIAL ASPECTS OF KNOTS AND SUTURES

Chele Nicolae- PhD, Professor, Head of Arsenie Gutan Department of Oral-Maxillofacial Surgery and Oral Implantology, *Nicolae Testemitanu* State University of Medicine and Pharmacy, Chisinau, Republic of Moldova

Motelica Gabriela- MD, PhD, Assistant Professor, Arsenie Gutan Department of Oral-Maxillofacial Surgery and Oral Implantology, *Nicolae Testemitanu* State University of Medicine and Pharmacy, Chisinau, Republic of Moldova

Chele Dumitru- MD, PhD, Assistant Professor, Arsenie Gutan Department of Oral-Maxillofacial Surgery and Oral Implantology, *Nicolae Testemitanu* State University of Medicine and Pharmacy, Chisinau, Republic of Moldova

This workshop focuses on imparting comprehensive knowledge and practical skills related to the techniques involved in dental implant insertion, as well as the crucial aspects of knots and sutures. Participants will gain insights into the intricate process of placing dental implants,

including pre-operative assessment, surgical techniques, and post-operative care. Additionally, the workshop will cover the fundamentals of knot tying and suturing techniques essential for successful wound closure and tissue healing. Through interactive sessions and hands-on practice, participants will enhance their proficiency in dental implant procedures and surgical suturing, ensuring optimal outcomes for patients undergoing implant treatment.

7. THE HALL TECHNIQUE IN THE RESTORATION OF CORONAL DESTRUCTION IN TEMPORARY TEETH

Stepco Elena- MD, PhD, Associate Professor, „Ion Lupan" Department of Pediatric Oral-Maxillofacial Surgery and Pedodontics, *Nicolae Testemițanu* State University of Medicine and Pharmacy, Chisinau, Republic of Moldova

Bălțeanu Olga- MD, PhD, Assistant Professor, „Ion Lupan" Department of Pediatric Oral-Maxillofacial Surgery and Pedodontics, *Nicolae Testemițanu* State University of Medicine and Pharmacy, Chisinau, Republic of Moldova

Carabulea Gabriela- MD, PhD, Assistant Professor, „Ion Lupan" Department of Pediatric Oral-Maxillofacial Surgery and Pedodontics, *Nicolae Testemițanu* State University of Medicine and Pharmacy, Chisinau, Republic of Moldova

Sîrbu Irina- MD, PhD, Assistant Professor, „Ion Lupan" Department of Pediatric Oral-Maxillofacial Surgery and Pedodontics, *Nicolae Testemițanu* State University of Medicine and Pharmacy, Chisinau, Republic of Moldova

Poștaru Cristina- MD, Assistant Professor, Pavel Godoroja Department of Dental Propedeutics, *Nicolae Testemițanu* State University of Medicine and Pharmacy, Chisinau

Theoretical presentation of temporary tooth preparation techniques for the Hall technique and adaptation of different types of prefabricated crowns to the prepared teeth. (Power point). Practical demonstration on typodont. Performing the procedure by each participant on the typodont. Question and answer session, summary discussions by the coordinator.

Scientific sessions

I. BEYOND THE SCALPEL: EXPLORING FRONTIERS IN SURGICAL SCIENCE

Chairman: Rojnoveanu Gheorghe, MD, PhD, Professor

Members: Corduneanu Angela, MD, Associate Professor

Culiuc Vasile, MD, Associate Professor

Diacova Svetlana, MD, Associate Professor

Oprea Andrei, MD, Professor

Secretary: Pascari Otilia, Iutis Vlada, Cuşnir Magdalena

1. Ailene Anca- DIFFUSE AXONAL INJURY IN A PATIENT WITH POLYTRAUMA

Scientific advisor: Gălbineanu Simona

2. Al Faraj Iunis- CELL THERAPY IN CHRONIC RHINOSINUSITIS IN CHILDREN

Scientific advisor: Didencu Alexandru, MD, Associate Professor, Department of Otorhinolaryngology, *Nicolae Testemitanu* State University of Medicine and Pharmacy, Chisinau, Republic of Moldova

3. Albino Maria Landi - BLADDER INSTILLATIONS WITH SODIUM HYALURONATE IN THE MANAGEMENT OF URINARY TRACT INFECTIONS: A CASE REPORT STUDY.

Scientific advisor: Donath-Miklos Imola, Department of Physiology, Faculty of Medicine, “Vasile Goldis” Western University of Arad.

4. Bejenari Dmitrii- CONTEMPORARY MANAGEMENT OF THYROID NODULES

Scientific advisor: Iliadi Alexandru, MD, PhD, Associate Professor, Surgery Department No.1, *Nicolae Testemitanu* State University of Medicine and Pharmacy, Chisinau, Republic of Moldova

5. Bolăndău Luca- SURGICAL TREATMENT OF ACROMIOCLAVICULAR JOINT INJURIES

Scientific advisor: Tulbure Vasile, PhD, Traumatology and Orthopedics

6. Bradu Mihaela - A CASE OF BOERHAAVE SYNDROME- CHALLENGES IN DIAGNOSIS AND TREATMENT

Scientific advisor: Caragia Eugen MD, Panţîri Sergiu MD

7. Carciumaru Marius- TREATMENT OF BILIARY OBSTRUCTION- ENDOSCOPIC RETROGRADE CHOLANGIOPANCREATOGRAPHY VS TRADITIONAL SURGERY

Scientific advisor: Hogeia Mircea, MD, Assistant Professor, Transilvania University of Brasov

8. **Ciorba Nadejda**- EVOLUTIONARY METHODS TO IDENTIFY THE OCULAR LYMPHATIC SYSTEM

Scientific advisor: Cusnir Valeriu, MD, PhD, Professor, Department of Ophthalmology-Optometry, *Nicolae Testemitanu* State University of Medicine and Pharmacy, Chisinau, Republic of Moldova

9. **Cușnir Magdalena** - IMMUNOPATHOLOGY OF LIVER TRANSPLANTATION

Scientific advisor: Iacob Vladimir, MD, Associate Professor, General Surgery-Semiology Department No. 3, *Nicolae Testemitanu* State University of Medicine and Pharmacy, Chisinau, Republic of Moldova

10. **Drăgan Iuventina**- MANAGEMENT OF AXILLARY ARTERY INJURY

Scientific advisor: Culiuc Vasile, MD, Associate Professor, General Surgery-Semiology Department No. 3, *Nicolae Testemitanu* State University of Medicine and Pharmacy, Chisinau, Republic of Moldova

11. **Dumbraveanu Ion** - HISTOLOGICAL OUTCOME AFTER CONVENTIONAL TESTICULAR SPERM EXTRACTION VS MICROSURGICAL TECHNICS IN PATIENTS WITH AZOOSPERMIA

Scientific advisor: Dumbrăveanu Ion, Associate Professor, Department of Surgical Urology and Nephrology, *Nicolae Testemitanu* State University of Medicine and Pharmacy, Chisinau, Republic of Moldova

12. **Gaidova Ecaterina**- RELEVANCE OF COLOR DOPPLER EXAMINATION IN THE ASSESSMENT OF THYROID NODULES

Scientific advisor: Bour Alin, PhD, Professor, Head of Department of Surgery No. 5, *Nicolae Testemitanu* State University of Medicine and Pharmacy, Chisinau, Republic of Moldova

13. **Istrati Andriana** - COHLEAR IMPLANTATION IN DEAF-MUTE ADULT WITH PARTIAL OPTIC NERVE ATROPHY

Scientific advisor: Didencu Alexandru, MD, Associate Professor, Department of Otorhinolaryngology, *Nicolae Testemitanu* State University of Medicine and Pharmacy, Chisinau, Republic of Moldova

14. **Iuțis Vlada** - CHRONIC SUPPURATIVE OTITIS MEDIA COMPLICATED WITH FACIAL PARESIS

Scientific advisor: Vetrician Sergiu, MD, PhD, Professor, Department of Otorhinolaryngology, *Nicolae Testemitanu* State University of Medicine and Pharmacy, Chisinau, Republic of Moldova

15. Lozan Cătălina- POSTOPERATIVE URINARY RETENTION: RISK FACTORS AND PREVALENCE

Scientific advisor: Belii Natalia, Associate Professor, Valeriu Ghereg Anesthesiology and Resuscitation Department No.1, *Nicolae Testemitanu* State University of Medicine and Pharmacy, Chisinau, Republic of Moldova.

16. Mable Moni Kochummen - EXTRA-ANATOMIC BYPASSES: A SOLUTION FOR COMPLEX CLINICAL SCENARIOS IN VASCULAR SURGERY

Scientific advisor: Casian Dumitru, MD, PhD, Head of General Surgery-Semiology Department No. 3, *Nicolae Testemitanu* State University of Medicine and Pharmacy, Chisinau, Republic of Moldova

17. Mayinkaatil Veetil Kadeeja - 3D MODELLING IN BONE GRAFT SUBSTITUTES, INCLUDING DEVICES FOR IMPLANTATION

Scientific advisor: Nacu Viorel, PhD, Professor, Department of Anatomy and Clinical Anatomy, Head of Laboratory of Tissue Engineering and Cellular Culture, *Nicolae Testemitanu* State University of Medicine and Pharmacy, Chisinau, Republic of Moldova

18. Moldavskaia Zlata- GENETICALLY DETERMINED PIGMENTARY RETINOPATHY (PR) IN SYSTEMIC DISEASES

Scientific advisor: Corduneanu Angela, MD, PhD, Associate Professor, Department of Ophthalmology-Optometry, *Nicolae Testemitanu* State University of Medicine and Pharmacy, Chisinau, Republic of Moldova

19. Nacu Mihail- ETIOLOGICAL FACTORS AND THERAPEUTIC PERSPECTIVES IN DISTAL RENAL TUBULAR ACIDOSIS

Scientific advisor: Cemortan Igor, MD, PhD, Associate Professor, Department of Molecular Biology and Human Genetics, *Nicolae Testemitanu* State University of Medicine and Pharmacy, Chisinau, Republic of Moldova; Banov Pavel, MD, Associate Professor, Department of Surgical Urology and Nephrology, *Nicolae Testemitanu* State University of Medicine and Pharmacy, Chisinau, Republic of Moldova

20. Ozcan Yasin Karabacak - METASTATIC MATURE TERATOMA ASSOCIATION WITH AZOOSPERMIA DUE TO BILATERAL CRYPTORCHIDISM AND TESTICULAR BENIGN TERATOMA: CASE REPORT

Scientific advisor: Dumbrăveanu Ion, Associate Professor, Department of Surgical Urology and Nephrology, *Nicolae Testemitanu* State University of Medicine and Pharmacy, Chisinau, Republic of Moldova

21. Palamarciuc Luminița- DESCRIPTIVE STUDY OF DIAGNOSTICAL FINDINGS IN MALE WITH SEVERE OAT SYNDROME AND AZOOSPERMIA

Scientific advisor: Dumbrăveanu Ion, Associate Professor, Department of Surgical Urology and Nephrology, *Nicolae Testemitanu* State University of Medicine and Pharmacy, Chisinau, Republic of Moldova

22. Pascari Otilia- COMPLEX INNOVATIVE MANAGEMENT OF THE GIANT ABDOMINAL HERNIA

Scientific advisor: Roman Targon, PhD, Assistant Professor, General Surgery-Semiology Department No. 3, *Nicolae Testemitanu* State University of Medicine and Pharmacy, Chisinau, Republic of Moldova

23. Poorvika Narayanappa - MULTIMODAL TREATMENT IN GASTRIC CANCER

Scientific advisor: Vozian Marin, MD, PhD, Associate Professor, Nicolae Anestiadi Surgery Department Nr.1, *Nicolae Testemitanu* State University of Medicine and Pharmacy, Chisinau, Republic of Moldova

24. Prisăcaru Mihaela- UNILATERAL SENSORINEURAL DEAFNESS CONTEMPORARY ASPECTS OF ETIOPATHOGENESIS, DIAGNOSIS AND TREATMENT

Scientific advisor: Chiaburu Anghelina, PhD, Professor, Department of Otorhinolaryngology, *Nicolae Testemitanu* State University of Medicine and Pharmacy, Chisinau, Republic of Moldova

25. Săbăduș Eric Christian- INNOVATION IN THE TREATMENT OF MYELOMENINGOCELE: ADVANCED APPROACH TO CORRECTION THROUGH FETAL SURGERY

Scientific advisor: Hogeia Mircea, MD, Assistant Professor, Transilvania University of Brasov

26. Stratan Veronica- MINIMALLY INVASIVE REPAIR TECHNIQUES IN BARLOW'S MITRAL VALVE DISEASE.

Scientific advisor: Ciubotaru Anatol, MD, PhD, Professor, Head of Cardiovascular Surgery Course, *Nicolae Testemitanu* State University of Medicine and Pharmacy, Chisinau, Republic of Moldova

27. Țîbulac Daniela- BENIGN TUMORS OF THE VOCAL CHORDS. GENERAL NOTIONS. EPIDEMIOLOGY, ETIOPATHOGENESIS AND TREATMENT

Scientific advisor: Cabac Vasile, MD, PhD, Associate Professor, Department of Otorhinolaryngology, *Nicolae Testemitanu* State University of Medicine and Pharmacy, Chisinau, Republic of Moldova; Cernev Daniela, PhD, Assistant Professor, Department of Otorhinolaryngology, *Nicolae Testemitanu* State University of Medicine and Pharmacy, Chisinau, Republic of Moldova

II. BREATHE EASY: ADVANCES IN PNEUMOLOGY AND ALLERGOLOGY

Chairman: Corlăteanu Alexandru, MD, PhD, Professor

Members: Călăraș Diana, MD, PhD, Associate Professor
Chesov Dumitru, MD, PhD, Associate Professor
Toma Cristina, MD, PhD, Associate Professor

Secretary: Budu Mădălina, Stafi Vlada

1. Ali Noureen - SARCOIDOSIS AND TUBERCULOSIS- A DIAGNOSTIC AND MANAGEMENT CHALLENGE

Scientific advisor: Calaras Diana, MD, PhD, Associate Professor, Pneumology and Allergology Discipline, Department of Internal Medicine, *Nicolae Testemitanu* State University of Medicine and Pharmacy, Chisinau, Republic of Moldova

2. Avadăni Mihaela- CHRONIC OBSTRUCTIVE PULMONARY DISEASE AND DEPRESSION

Scientific advisor: Corlăteanu Alexandru, MD, Professor, Head of Discipline, Pneumology and Allergology Discipline, Department of Internal Medicine, *Nicolae Testemitanu* State University of Medicine and Pharmacy, Chisinau, Republic of Moldova

3. Butucel Ana- HEREDITARY ANGIOEDEMA WITH C1 INHIBITOR DEFICIENCY

Scientific advisor: Brocovschii Victoria, MD, PhD, Associate Professor, Pneumology and Allergology Discipline, Department of Internal Medicine, *Nicolae Testemitanu* State University of Medicine and Pharmacy, Chisinau, Republic of Moldova

4. Cebotari Iuliana - WHEAT-DEPENDENT EXERCISE-INDUCED ANAPHYLAXIS

Scientific advisor: Toma Cristina, PhD, MD, Associate Professor, Pneumology and Allergology Discipline, Department of Internal Medicine, *Nicolae Testemitanu* State University of Medicine and Pharmacy, Chisinau, Republic of Moldova

5. Chiosa Mihaela- HYPEREOSINOPHILIC SYNDROME- DIAGNOSTIC CHALLENGES IN ALLERGIC PATIENTS

Scientific advisor: Brocovschii Victoria, MD, PhD, Associate Professor, Pneumology and Allergology Discipline, Department of Internal Medicine, *Nicolae Testemitanu* State University of Medicine and Pharmacy, Chisinau, Republic of Moldova

6. Gilca Gabriela - IMPACT OF NEW CLASSIFICATION OF COPD ON ASSESSMENT OF SEVERITY

Scientific advisor: Corlăteanu Alexandru, MD, Professor, Head of Discipline, Pneumology and Allergology Discipline, Department of Internal Medicine, *Nicolae Testemitanu* State University of Medicine and Pharmacy, Chisinau, Republic of Moldova

7. **Luca Ion** - CANCER NEVER TAKES A BREAK — A NEW REALITY, THE SAME RELENTLESS ADVERSARY

Scientific advisor: Toma Cristina, PhD, MD, Associate Professor, Pneumology and Allergology Discipline, Department of Internal Medicine, *Nicolae Testemitanu* State University of Medicine and Pharmacy, Chisinau, Republic of Moldova

8. **Lupu Liliana** - IMPACT OF CHRONIC OBSTRUCTIVE PULMONARY DISEASE ON QUALITY OF LIFE

Scientific advisor: Corlăteanu Alexandru, MD, Professor, Head of Discipline, Pneumology and Allergology Discipline, Department of Internal Medicine, *Nicolae Testemitanu* State University of Medicine and Pharmacy, Chisinau, Republic of Moldova

9. **Polevoi Valentina**- THE DIAGNOSTIC CHALLENGE IN A PATIENT WITH METACHRONOUS MALIGNANCIES

Scientific advisor: Calaras Diana, MD, PhD, Associate Professor, Pneumology and Allergology Discipline, Department of Internal Medicine, *Nicolae Testemitanu* State University of Medicine and Pharmacy, Chisinau, Republic of Moldova

10. **Potop – Rotari Dorina**- PULMONARY TUBERCULOSIS WITH PNEUMONIA-LIKE ONSET IN POST-PANDEMIC ERA: CASE SERIES

Scientific advisor: Dumitras Tatiana, PhD, Associate Professor, Clinical Synthesis Discipline, Department of Internal Medicine, *Nicolae Testemitanu* State University of Medicine and Pharmacy, Chisinau, Republic of Moldova

11. **Stafi Vlada** - CHALLENGES AND OPPORTUNITIES OF THE ARTIFICIAL INTELLIGENCE IN RESPIRATORY MEDICINE

Scientific advisor: Corlăteanu Alexandru, MD, Professor, Head of Discipline, Pneumology and Allergology Discipline, Department of Internal Medicine, *Nicolae Testemitanu* State University of Medicine and Pharmacy, Chisinau, Republic of Moldova

12. **Vacarciuc Eugenia-Cristina** - PULMONARY TUBERCULOSIS WITH CHRONIC EVOLUTION – CLINICAL ASPECTS

Scientific advisor: Kulcițkaia Stela, Associate Professor, Pneumology and Allergology Discipline, Department of Internal Medicine, *Nicolae Testemitanu* State University of Medicine and Pharmacy, Chisinau, Republic of Moldova

III. CARING FOR TOMORROW'S LEADERS: INNOVATIONS IN PEDIATRICS

Chairman: Revenco Ninel, MD, PhD, Professor

Members: Bogonovschi Livia, MD, PhD, Assistant Professor

Cracea Angela, MD, PhD, Associate Professor

Eremciuc Rodica, MD, PhD, Assistant Professor

Romanciuc Lilia, MD, PhD, Associate Professor

Secretary: Burda Loredana

1. **Alexeev Tatiana-** BURDEN OF BULLYING FOR MENTAL HEALTH STATE IN CHILDREN AND ADOLESCENTS

Scientific advisor: Eremciuc Rodica, MD, Assistant Professor, Department of Pediatrics, *Nicolae Testemitanu* State University of Medicine and Pharmacy, Chisinau, Republic of Moldova

2. **Cepraga Victoria-** EVALUATION OF ADIPOSITY INDICES IN PEDIATRIC RHEUMATOLOGICAL DISORDERS

Scientific advisors: Eremciuc Rodica, MD, Assistant Professor, Department of Pediatrics, *Nicolae Testemitanu* State University of Medicine and Pharmacy, Chisinau, Republic of Moldova; Revenco Ninel, PhD, Professor, Head of Department of Pediatrics, *Nicolae Testemitanu* State University of Medicine and Pharmacy, Chisinau, Republic of Moldova

3. **Cojocari Diana-** INTERVENTIONS FOR THE PREVENTION OF SMOKING AMONG CHILDREN AND ADOLESCENTS

Scientific advisor: Eremciuc Rodica, MD, Assistant Professor, Department of Pediatrics, *Nicolae Testemitanu* State University of Medicine and Pharmacy, Chisinau, Republic of Moldova

4. **Gorbatenco Daniela-** A CASE REPORT OF SINGLE VENTRICLE - PECULIARITIES OF EVOLUTION IN A 8-MONTH OLD CHILD

Scientific advisor: Cîrstea Olga, MD, PhD, Associate Professor, Department of Pediatrics, *Nicolae Testemitanu* State University of Medicine and Pharmacy, Chisinau, Republic of Moldova

5. **Miaun Livia-** EMICIZUMAB IN PEDIATRIC HEMOPHILIA A: A CASE STUDY

Scientific advisor: Cianga Anca Lavinia, MD, PhD student

6. **Mihălache Nicoleta-** TREATMENT OF CERVICAL CYSTIC LYMPHANGIOMA IN CHILDREN

Scientific advisor: Bernic Jana, PhD, Professor, Natalia Gheorghiu Pediatric Surgery, Orthopedics and Anesthesiology Department, *Nicolae Testemitanu* State University of Medicine and Pharmacy of the Republic of Moldova.

7. **Mîndru-Ciumac Elena** - CONGENITAL VASCULAR MALFORMATIONS OF THE AORTIC ARCH AS A RISK FACTOR FOR RECURRENT PNEUMONIA IN CHILDREN - CASE REPORT

Scientific advisor: Cîrstea Olga, MD, PhD, Associate Professor, Department of Pediatrics, *Nicolae Testemitanu* State University of Medicine and Pharmacy, Chisinau, Republic of Moldova; Revenco Ninel, PhD, Professor, Head of Department of Pediatrics, *Nicolae Testemitanu* State University of Medicine and Pharmacy, Chisinau, Republic of Moldova

8. **Nedealcova Elena**- RETINAL VASCULATURE PECULIARITIES IN PATIENTS WITH JUVENILE IDIOPATHIC ARTHRITIS: INSIGHTS FROM OPTICAL COHERENCE TOMOGRAPHY ANGIOGRAPHY

Scientific advisor: Revenco Ninel, PhD, Professor, Head of Department of Pediatrics, *Nicolae Testemitanu* State University of Medicine and Pharmacy, Chisinau, Republic of Moldova

9. **Pirlii Mihaela**- PARENTS' KNOWLEDGE, ATTITUDES AND PRACTICES REGARDING INFANT FEEDING

Scientific advisor: Holban Ala, PhD, Associate Professor, Department of Pediatrics, *Nicolae Testemitanu* State University of Medicine and Pharmacy, Chisinau, Republic of Moldova

10. **Rajana Razak**- ETIOLOGY AND TREATMENT OF SUPRAVENTRICULAR ARYTHMIAS IN CHILDREN

Scientific advisor: Romanciuc Lilia, PhD, Associate Professor, Department of Pediatrics, *Nicolae Testemitanu* State University of Medicine and Pharmacy, Chisinau, Republic of Moldova

11. **Spînu Tatiana**- ADENOVIRAL INFECTION IN CHILDREN: CASE REPORT

Scientific advisor: Alexeev Tatiana, MD, PhD, Associate Professor, Department of Infectious Diseases, *Nicolae Testemitanu* State University of Medicine and Pharmacy, Chisinau, Republic of Moldova

12. **Vlad Vasile**- CLINICAL FEATURES OF EPSTEIN-BARR VIRUS INFECTION IN CHILDREN AGED 0-3 YEARS

Scientific advisor: Birca Ludmila, Associate Professor, Department of Infectious Diseases, *Nicolae Testemitanu* State University of Medicine and Pharmacy, Chisinau, Republic of Moldova

IV. EXPLORING FUNDAMENTAL SCIENCES IN MEDICINE. ORAL PRESENTATION

Chairman: Bacinschi Nicolae, MD, PhD, Professor

Members: Catereniuc Ilia, MD, PhD, Professor

Saptefrati Lilian, MD, PhD, Associate Professor

Tagadiuc Olga, MD, PhD, Professor

Secretary: Ungureanu Diana

1. **Anaswara Kuzhipurayidathil Vijayakumar-** UNMASKING THE TECHNOLOGICAL INNOVATIONS: INSIGHTS THROUGH THE ENCODE PROJECT

Scientific advisor: Sidorenko Ludmila, Lecturer, Department of Molecular Biology and Human Genetics, *Nicolae Testemitanu* State University of Medicine and Pharmacy, Chisinau, Republic of Moldova

2. **Ashkar Laila-** VARIATION OF THE MASTOID SEGMENT OF THE FACIAL CANAL AND OF THE STYLOMASTOID FORAMEN

Scientific advisor: Babuci Angela, MD, PhD, Assistant Professor, Department of Anatomy and Clinical Anatomy, *Nicolae Testemitanu* State University of Medicine and Pharmacy, Chisinau, Republic of Moldova

3. **Bogdanov Alan-** GENE THERAPY FOR ADENOSINE DEAMINASE SEVERE COMBINED IMMUNODEFICIENCY (ADA-SCID)

Scientific advisor: Corețchi Ianoș, PhD, Associate Professor, Department of Pharmacology and Clinical Pharmacology, *Nicolae Testemitanu* State University of Medicine and Pharmacy, Chisinau, Republic of Moldova

4. **Buciumaș Aurelia-** THE BIOCHEMICAL RELATIONSHIP BETWEEN STRESS AND AUTOIMMUNITY

Scientific advisor: Ambros Ala, MD, Associate Professor, Department of Biochemistry and Clinical Biochemistry, *Nicolae Testemitanu* State University of Medicine and Pharmacy, Chisinau, Republic of Moldova

5. **Bugaian Valeria-** TREATMENT OF CONVULSIVE SYNDROME IN PEDIATRIC PATIENTS

Scientific advisor: Turcan Lucia, MD, Associate Professor, Department of Pharmacology and Clinical Pharmacology, *Nicolae Testemitanu* State University of Medicine and Pharmacy, Chisinau, Republic of Moldova

6. **Buraga Adelina-** UNLOCKING THE SHIELD: EXAMINING RETINAL PROTECTION VIA MACULAR CAROTENOIDS' ANTIOXIDANT CAPACITY

Scientific advisor: Pavlovschi Ecaterina, Assistant Professor, Department of Biochemistry and Clinical Biochemistry, *Nicolae Testemitanu* State University of Medicine and Pharmacy, Chisinau, Republic of Moldova

7. **Caraman Daniela-** CYSTIC FIBROSIS: CURRENT THERAPEUTIC TARGETS BASED ON SYMPTOMS OCCURRED DUE TO SPECIFIC CFRT GENE MUTATIONS

Scientific advisor: Barbova Natalia, MD, PhD, Associate Professor, Department of Molecular Biology and Human Genetics, *Nicolae Testemitanu* State University of Medicine and Pharmacy, Chisinau, Republic of Moldova

8. **Ciolac Maria** - ADENO-ASSOCIATED VIRUS (AAV) - BASED GENE THERAPIES FOR RETINAL DISEASES

Scientific advisor: Cemortan Igor, MD, PhD, Associate Professor, Department of Molecular Biology and Human Genetics, *Nicolae Testemitanu* State University of Medicine and Pharmacy, Chisinau, Republic of Moldova;

9. **Cojvnicov Emanuela-** MOLECULAR ASPECTS OF AMINOGLYCOSIDE OTOTOXICITY

Scientific advisor: Capcelea Svetlana, MD, PhD, Associate Professor, Department of Molecular Biology and Human Genetics, *Nicolae Testemitanu* State University of Medicine and Pharmacy, Chisinau, Republic of Moldova

10. **Croitoru Dan-** THE ANATOMICAL VARIABILITY OF THE LAST THREE PAIRS OF THE INTERCOSTAL ARTERIES

Scientific advisor: Vişnevschi Sergiu, Assistant Professor, Department of Anatomy and Clinical Anatomy, *Nicolae Testemitanu* State University of Medicine and Pharmacy, Chisinau, Republic of Moldova;

11. **Ferdohleb Alexandrina-** USE OF SODIUM-GLUCOSE COTRANSPORTER 2 INHIBITORS IN HEART FAILURE

Scientific advisor: Bacinschi Nicolae, PhD, Professor, Head of Department of Pharmacology and Clinical Pharmacology, *Nicolae Testemitanu* State University of Medicine and Pharmacy, Chisinau, Republic of Moldova

12. **Louka George** - MESENCHYMAL STEM CELL-DERIVED EXOSOMES AND THEIR ANTINEOPLASTIC POTENTIAL

Scientific advisor: Coreţchi Ianoş, PhD, Associate Professor, Department of Pharmacology and Clinical Pharmacology, *Nicolae Testemitanu* State University of Medicine and Pharmacy, Chisinau, Republic of Moldova

13. **Guţu Ana** - GENETIC FACTORS RESPONSIBLE FOR OVARIAN RESERVE

Scientific advisor: Capcelea Svetlana, MD, PhD, Associate Professor, Department of Molecular Biology and Human Genetics, *Nicolae Testemitanu* State University of Medicine and Pharmacy, Chisinau, Republic of Moldova.

14. Iarovi Alexandru- CONTEMPORARY APPROACHES TO THE TREATMENT OF FRONTOTEMPORAL DEMENTIA

Scientific advisor: Rakovskaia Tatiana, MD, Assistant Professor, Department of Pharmacology and Clinical Pharmacology, *Nicolae Testemitanu* State University of Medicine and Pharmacy, Chisinau, Republic of Moldova.

15. Lopatinschi Valeria - THREE GENERATIONS OF B-BLOCKERS: CLASS DIFFERENCES AND CLINICAL APPLICABILITY

Scientific advisor: Rakovskaia Tatiana, MD, Assistant Professor, Department of Pharmacology and Clinical Pharmacology, *Nicolae Testemitanu* State University of Medicine and Pharmacy, Chisinau, Republic of Moldova

16. Lungu Maria- NEW CONCEPTS OF TREATMENT OF CARPAL TUNNEL SYNDROME

Scientific advisor: Stratu Ecaterina, MD, Associate Professor, Department of Pharmacology and Clinical Pharmacology, *Nicolae Testemitanu* State University of Medicine and Pharmacy, Chisinau, Republic of Moldova

17. Nicolenco Nicoleta- PARTICULARITIES OF THE ACTION OF THE INHIBITORS OF THE RENIN-ANGIOTENSIN-ALDOSTERONE SYSTEM IN MEN AND WOMEN

Scientific advisor: Bacinschi Nicolae, PhD, Professor, Head of Department of Pharmacology and Clinical Pharmacology, *Nicolae Testemitanu* State University of Medicine and Pharmacy, Chisinau, Republic of Moldova

18. Platon Angela- DECODING AMD: EXPLORING LIPOFUSCIN ACCUMULATION AND METABOLOMICS INSIGHTS

Scientific advisor: Pavlovschi Ecaterina, Assistant Professor, Department of Biochemistry and Clinical Biochemistry, *Nicolae Testemitanu* State University of Medicine and Pharmacy, Chisinau, Republic of Moldova

19. Rusu Ludmila- MORPHOLOGICAL FEATURES OF THE UMBILICAL ARTERY IN NORMAL PREGNANCY AND PREECLAMPSIA

Scientific advisor: Globa Tatiana, MD, PhD, Assistant Professor, Department of Histology, Cytology and Embryology, *Nicolae Testemitanu* State University of Medicine and Pharmacy, Chisinau, Republic of Moldova

20. Sanduța Ecaterina - THE USE OF NEW INSULIN ANALOGS IN TYPE 1 DIABETES

Scientific advisor: Spînosu Galina, Assistant Professor, Department of Pharmacology and Clinical Pharmacology, *Nicolae Testemitanu* State University of Medicine and Pharmacy, Chisinau, Republic of Moldova

21. Tihon Beatricie-Marinela- THE ROLE OF ESTROGENS IN CARDIOVASCULAR DISEASE

Scientific advisor: Bacinschi Nicolae, PhD, Professor, Head of Department of Pharmacology and Clinical Pharmacology, *Nicolae Testemitanu* State University of Medicine and Pharmacy, Chisinau, Republic of Moldova

22. Trofimov Cristian - THE BONE IN THE ELDERLY

Scientific advisors: Mazur Minodora, MD, PhD, Professor, Discipline of Internal Medicine-Semiology, Department of Internal Medicine, *Nicolae Testemitanu* State University of Medicine and Pharmacy, Chisinau, Republic of Moldova; Silvia Stratulat, MD, PhD, Associate Professor, Head of Department of Biochemistry and Clinical Biochemistry, *Nicolae Testemitanu* State University of Medicine and Pharmacy, Chisinau, Republic of Moldova; Mazur-Nicorici Lucia, MD, PhD, Professor, Discipline of Cardiology, Department of Internal Medicine, *Nicolae Testemitanu* State University of Medicine and Pharmacy, Chisinau, Republic of Moldova.

23. Ungureanu Diana- PHARMACOLOGICAL TREATMENT OF METABOLIC SYNDROME IN CHILDREN

Scientific advisor: Turcan Lucia, MD, Associate Professor, Department of Pharmacology and Clinical Pharmacology, *Nicolae Testemitanu* State University of Medicine and Pharmacy, Chisinau, Republic of Moldova

V. *EXPLORING FUNDAMENTAL SCIENCES IN MEDICINE. POSTER*

Chairman: Cemortan Igor, MD, PhD, Associate Professor

Members: Capcelea Svetlana, MD, PhD, Associate Professor

Global Tatiana, MD, PhD, Associate Professor

Pogonea Ina, MD, PhD, Associate Professor

Secretary: Jornea Mihaela

1. **Batîr Mihaela-** TELOMERE AND TELOMERASE FUNCTION: SAFEGUARDING CHROMOSOMAL ENDS AND THEIR IMPLICATIONS IN AGING AND CANCER DEVELOPMENT

Scientific advisor: Sprincean Mariana, PhD, Associate Professor, Department of Molecular Biology and Human Genetics, *Nicolae Testemitanu* State University of Medicine and Pharmacy, Chisinau, Republic of Moldova

2. **Berbeci Alexandrina-** ROLE OF FIBROBLASTS AND OTHER NON-FIBROBLASTIC STROMAL CELLS IN SUSTAINING THE THYROID GLAND STRUCTURE

Scientific advisor: Global Tatiana, MD, PhD, Assistant Professor, Department of Histology, Cytology and Embryology, *Nicolae Testemitanu* State University of Medicine and Pharmacy, Chisinau, Republic of Moldova

3. **Berliba Marina-** THE ROLE OF GUT MICROBIOTA METABOLITES IN ATHEROSCLEROSIS

Scientific advisor: Protopop Svetlana, MD, Associate Professor, Department of Biochemistry and Clinical Biochemistry, *Nicolae Testemitanu* State University of Medicine and Pharmacy, Chisinau, Republic of Moldova

4. **Briceag Maria-** THE INTERPLAY OF GROWTH HORMONE, INSULIN-LIKE GROWTH FACTORS, AND CANCER SUSCEPTIBILITY: A MEDICAL PERSPECTIVE

Scientific advisor: Pavlovschi Ecaterina, Assistant Professor, Department of Biochemistry and Clinical Biochemistry, *Nicolae Testemitanu* State University of Medicine and Pharmacy, Chisinau, Republic of Moldova

5. **Cozma Octavian-** THE ROLE OF JAK-INHIBITORS IN THE TREATMENT OF RHEUMATOID ARTHRITIS

Scientific advisor: Timercan Tatiana, PhD, Associate Professor, Department of Biochemistry and Clinical Biochemistry, *Nicolae Testemitanu* State University of Medicine and Pharmacy, Chisinau, Republic of Moldova

6. **Dacu Nicoleta-** INTERPLAY OF GLUCOSE METABOLISM AND ITS INFLUENCE ON MYOPIA DEVELOPMENT

Scientific advisor: Pavlovschi Ecaterina, Assistant Professor, Department of Biochemistry and Clinical Biochemistry, *Nicolae Testemitanu* State University of Medicine and Pharmacy, Chisinau, Republic of Moldova

7. **Darii Felicia-** THE ROLE OF LEPTIN IN THE PATHOGENESIS OF METABOLIC DYSFUNCTION-ASSOCIATED FATTY LIVER DISEASE

Scientific advisor: Tagadiuc Olga, MD, PhD, Associate Professor, Department of Biochemistry and Clinical Biochemistry, *Nicolae Testemitanu* State University of Medicine and Pharmacy, Chisinau, Republic of Moldova

8. **Dănilă Alexandru-** FROM OXIDATIVE STRESS TO BONE HEALING: A BIOCHEMICAL INSIGHT INTO THE FRACTURE RECOVERY PROCESS

Scientific advisor: Pavlovschi Ecaterina, Assistant Professor, Department of Biochemistry and Clinical Biochemistry, *Nicolae Testemitanu* State University of Medicine and Pharmacy, Chisinau, Republic of Moldova

9. **Doni Elena-** INDICATIONS AND LIMITS OF GENE THERAPY

Scientific advisor: Cemortan Igor, MD, PhD, Associate Professor, Department of Molecular Biology and Human Genetics, *Nicolae Testemitanu* State University of Medicine and Pharmacy, Chisinau, Republic of Moldova;

10. **Donici Nicolae -** PHARMACOLOGICAL MANAGEMENT OF PATENT DUCTUS ARTERIOSUS

Scientific advisor: Rakovskaia Tatiana, MD, Assistant Professor, Department of Pharmacology and Clinical Pharmacology, *Nicolae Testemitanu* State University of Medicine and Pharmacy, Chisinau, Republic of Moldova.

11. **Duca Alexandra-** EXPLORING THE ROLE OF N-TERMINAL PRO-BRAIN NATRIURETIC PEPTIDE AS A DIAGNOSTIC BIOMARKER IN KAWASAKI DISEASE

Scientific advisor: Pavlovschi Ecaterina, Assistant Professor, Department of Biochemistry and Clinical Biochemistry, *Nicolae Testemitanu* State University of Medicine and Pharmacy, Chisinau, Republic of Moldova

12. **Iapara Olga-** MECHANISMS OF DRUG-INDUCED NEPHROTOXICITY

Scientific advisor: Bacinschi Nicolae, PhD, Professor, Head of Department of Pharmacology and Clinical Pharmacology, *Nicolae Testemitanu* State University of Medicine and Pharmacy, Chisinau, Republic of Moldova

13. **Marciuc Vlada-** IMPACT OF OXIDATIVE STRESS ON LENS PROTEINS

Scientific advisor: Pavlovschi Ecaterina, Assistant Professor, Department of Biochemistry and Clinical Biochemistry, *Nicolae Testemitanu* State University of Medicine and Pharmacy, Chisinau, Republic of Moldova

14. Majeed Mufeed- TIRZEPATIDE – NEW TREATMENT OPTION FOR PATIENT WITH TYPE 2 DIABETES

Scientific advisor: Rakovskaia Tatiana, MD, Assistant Professor, Department of Pharmacology and Clinical Pharmacology, *Nicolae Testemitanu* State University of Medicine and Pharmacy, Chisinau, Republic of Moldova.

15. Minchevici Delia- DAPAGLIFLOZIN AS AN SGLT2 INHIBITOR AND ITS EFFECT ON THE TREATMENT OF TYPE 2 DIABETES

Scientific advisor: Chiriac Tatiana, MD, Assistant Professor, Department of Pharmacology and Clinical Pharmacology, *Nicolae Testemitanu* State University of Medicine and Pharmacy, Chisinau, Republic of Moldova

16. Moldovanu Mirela- MOLECULAR-GENETIC AND ENVIRONMENTAL MECHANISMS OF MYOPIA

Scientific advisor: Capcelea Svetlana, MD, PhD, Associate Professor, Department of Molecular Biology and Human Genetics, *Nicolae Testemitanu* State University of Medicine and Pharmacy, Chisinau, Republic of Moldova

17. Nacu Zinaida - VARIATIONAL ASPECTS OF THE DEEP FEMORAL ARTERY

Scientific advisor: Zorina Zinovia, MD, PhD, Associate Professor, Department of Anatomy and Clinical Anatomy, *Nicolae Testemitanu* State University of Medicine and Pharmacy, Chisinau, Republic of Moldova

18. Rotaras Arina - CORPUS CALLOSUM AGENESIS IN MORPHOCLINICAL ASPECT

Scientific advisor: Zorina Zinovia, MD, PhD, Associate Professor, Department of Anatomy and Clinical Anatomy, *Nicolae Testemitanu* State University of Medicine and Pharmacy, Chisinau, Republic of Moldova

19. Rotaraș Alina- ANATOMICAL VARIANTS OF THE MEDIAN SACRAL ARTERY

Scientific advisor: Zorina Zinovia, MD, PhD, Associate Professor, Department of Anatomy and Clinical Anatomy, *Nicolae Testemitanu* State University of Medicine and Pharmacy, Chisinau, Republic of Moldova

20. Volc Renata - GLUTEN INTOLERANCE. CELIAC DISEASE.

Scientific advisor: Ambros Ala, MD, Associate Professor, Department of Biochemistry and Clinical Biochemistry, *Nicolae Testemitanu* State University of Medicine and Pharmacy, Chisinau, Republic of Moldova

VI. EXPLORING THE BRAIN: ADVANCEMENTS IN NEUROLOGY AND NEUROSURGERY

Chairman: Groppa Stanislav, MD, PhD, Professor, Academician

Members: Galearschi Vasile, MD, PhD, Associate Professor

Hadjiu Svetlana, MD, PhD, Professor

Chiosa Vitalie, MD, PhD, Associate Professor

Secretary: Țîrchi Daniela, Vutcariov Regina

1. Andrianova Anastasia- THE CONSEQUENCES OF CRANIOCEREBRAL INJURIES CAUSED BY ELECTRIC SCOOTERS

Scientific advisor: Andronachi Victor, MD, PhD, Associate Professor, Department of Neurosurgery, *Nicolae Testemitanu* State University of Medicine and Pharmacy, Chisinau, Republic of Moldova; Andrusca Alexandru, MD, PhD student, Assistant Professor, *Nicolae Testemitanu* State University of Medicine and Pharmacy, Chisinau, Republic of Moldova

2. Babii Regina - AWARENESS OF STROKE– DEGREE OF PATIENTS CONCERN REGARDING THIS CONDITION

Scientific advisor: Zota Eremei, MD, Associate Professor, Neurology Department No. 2, *Nicolae Testemitanu* State University of Medicine and Pharmacy, Chisinau, Republic of Moldova

3. Costin Antonina- ARTIFICIAL INTELLIGENCE INVOLVEMENT IN NEUROSURGERY

Scientific advisor: Andrusca Alexandru, MD, PhD student, Assistant Professor, *Nicolae Testemitanu* State University of Medicine and Pharmacy, Chisinau, Republic of Moldova; Andronachi Victor, MD, PhD, Associate Professor, Department of Neurosurgery, *Nicolae Testemitanu* State University of Medicine and Pharmacy, Chisinau, Republic of Moldova

4. Curnic Andreea - STROKE IN PREGNANCY AND POSTPARTUM

Scientific advisor: Manole Elena, MD, PhD, Associate Professor, Neurology Department No.2, *Nicolae Testemitanu* State University of Medicine and Pharmacy, Chisinau, Republic of Moldova

5. Dumitrașco Ana-Maria - MINIMALLY INVASIVE TREATMENT OF PITUITARY ADENOMAS

Scientific advisor: Andronachi Victor, MD, PhD, Associate Professor, Department of Neurosurgery, *Nicolae Testemitanu* State University of Medicine and Pharmacy, Chisinau, Republic of Moldova; Andrusca Alexandru, MD, PhD student, Assistant Professor, *Nicolae Testemitanu* State University of Medicine and Pharmacy, Chisinau, Republic of Moldova

6. Frimu Anastasia - THE ROLE OF PREDICTIVE FACTORS OF HEMORRHAGIC TRANSFORMATION IN PATIENTS WITH ISCHEMIC STROKE UNDERGOING INTRAVENOUS THROMBOLYSIS

Scientific advisor: Groppa Stanislav, PhD, Professor, Academician of the Academy of Sciences of the Republic of Moldova, Neurology Department No. 2, *Nicolae Testemitanu* State University of Medicine and Pharmacy, Chisinau, Republic of Moldova

7. Malai Sergiu - CEREBRAL VENOUS THROMBOSIS AFTER TOTAL KNEE ARTHROPLASTY: CLINICAL CASE REPORT

Scientific advisors: Andronachi Victor, MD, PhD, Associate Professor, Department of Neurosurgery, *Nicolae Testemitanu* State University of Medicine and Pharmacy, Chisinau, Republic of Moldova; Andrusca Alexandru, MD, PhD student, Assistant Professor, *Nicolae Testemitanu* State University of Medicine and Pharmacy, Chisinau, Republic of Moldova

8. Olaru Natalia- EPILEPSY ASSOCIATED WITH CEREBRAL TOXOPLASMOSIS

Scientific advisor: Groppa Stanislav, PhD, Professor, Academician of the Academy of Sciences of the Republic of Moldova, Neurology Department No. 2, *Nicolae Testemitanu* State University of Medicine and Pharmacy, Chisinau, Republic of Moldova

9. Postolache Danu - STRESS AND NEURONAL CELL DEATH: PATHOGENETIC MECHANISMS, MANAGEMENT AND TREATMENT

Scientific advisor: Gavriiliuc Mihail, PhD, Professor, Head of Neurology Department No. 1, *Nicolae Testemitanu* State University of Medicine and Pharmacy, Chisinau, Republic of Moldova

10. Saranciuc Ruslana - THE ROLE OF VIRTUAL AND AUGMENTED REALITY IN NEUROSCIENCE

Scientific advisor: Moldovanu Ion, PhD, Professor, Neurology Department No. 1, *Nicolae Testemitanu* State University of Medicine and Pharmacy, Chisinau, Republic of Moldova

11. Stratulat Gabriel- MICROSURGICAL TACTICS OF IV VENTRICLE INFILTRATIVE EPENDYMOMAS

Scientific advisor: Timirgaz Valerii, PhD, MD, Associate Professor, Department of Neurosurgery, *Nicolae Testemitanu* State University of Medicine and Pharmacy, Chisinau, Republic of Moldova

12. Todica Vladislav- APPLICATION OF VIRTUAL REALITY (VR) IN THE PLANNING AND SIMULATION OF URGENT NEUROSURGICAL INTERVENTIONS

Scientific advisor: Andrusca Alexandru, MD, PhD student, Assistant Professor, *Nicolae Testemitanu* State University of Medicine and Pharmacy, Chisinau, Republic of Moldova; Andronachi Victor, MD, PhD, Associate Professor, Department of Neurosurgery, *Nicolae Testemitanu* State University of Medicine and Pharmacy, Chisinau, Republic of Moldova

13. Țîrchi Daniela - TELENEUROLOGY A 21ST CENTURY CHALLENGE IN MONITORING CHRONIC NEUROLOGICAL CONDITIONS

Scientific advisor: Gavriiliuc Mihail, PhD, Professor, Head of Neurology Department No. 1, *Nicolae Testemitanu* State University of Medicine and Pharmacy, Chisinau, Republic of Moldova

VII. HEARTBEATS OF INNOVATION: FRONTIERS IN CARDIOLOGY RESEARCH

Chairman: Grib Livi, MD, PhD, Professor

Members: Grejdieru Alexandra, MD, PhD, Associate Professor

Mazur-Nicorici Lucia, MD, PhD, Professor

Vetрилă Snejana, MD, PhD, Associate Professor

Ochisor Viorica, MD, PhD, Associate Professor

Secretary: Tofan Lucian

1. Abdool Rahim Sooltan – PERSONALISED MEDICINE AND CARDIOVASCULAR DISEASES

Scientific advisor: Garabajiu Maria, Assistant Professor, Department of Family Medicine, *Nicolae Testemitanu* State University of Medicine and Pharmacy, Chisinau, Republic of Moldova.

2. Anugrah Joy – PREVALENCE OF POAF FOLLOWING CARDIAC SURGERY AND COMPARATIVE STUDY ON THE PREFERRED TREATMENT MODALITIES

Scientific advisor: Tcaciuc Angela, MD, PhD, Associate Professor, Discipline of Cardiology, Department of Internal Medicine, *Nicolae Testemitanu* State University of Medicine and Pharmacy, Chisinau, Republic of Moldova

3. Boico Irina- DRUG-DRUG INTERACTIONS AMONG HYPERTENSIVE PATIENTS.

Scientific advisor: Mazur-Nicorici Lucia, MD, PhD, Professor, Discipline of Cardiology, Department of Internal Medicine, *Nicolae Testemitanu* State University of Medicine and Pharmacy, Chisinau, Republic of Moldova.

4. Ciocoiu Vlad – CRITICAL DECISIONS IN CORONARY INTERVENTIONS: BYPASS VS. STENT – A DETAILED ANALYSIS

Scientific advisor: Hogeа Mircea, 62ssist univ, Braşov

5. Coneschi-Covalciuc Vladislava- INFECTIVE ENDOCARDITIS CAUSED BY STAPHYLOCOCCUS AUREUS.

Scientific advisors: Tinica Grigore, Bacusca Alberto

6. Dumitras Mariana- INFECTIVE ENDOCARDITIS IN A HAEMODIALYSIS PATIENT: A CHALLENGING CLINICAL CASE

Scientific advisor: Grejdieru Alexandra, PhD, MD, Associate Professor, Discipline of Cardiology, Department of Internal Medicine, *Nicolae Testemitanu* State University of Medicine and Pharmacy, Chisinau, Republic of Moldova

7. Erica-Gabriela Bălaşa – MUSIC THERAPY INTERVENTION ON CARDIAC PARAMETERS IN HYPERTENSIVE PATIENTS: MYTH OR REALITY

Scientific advisor: Mazur-Nicorici Lucia, MD, PhD, Professor, Discipline of Cardiology, Department of Internal Medicine, *Nicolae Testemitanu* State University of Medicine and Pharmacy, Chisinau, Republic of Moldova.

8. **Gobjila Ion** – THE CORRECT EARLY DIAGNOSIS ESTABLISHED BY THE MULTIDISCIPLINARY TEAM IS THE KEY TO SUCCESS IN THE TREATMENT OF THE POST-MYOCARDIAL INFARCTION PATIENT, COMPLICATED WITH RENAL INFARCTION AND PNEUMONIA-INFARCTION

Scientific advisor: Grăjdieru Romeo, PhD, MD, Associate Professor, Discipline of Cardiology, Department of Internal Medicine, *Nicolae Testemitanu* State University of Medicine and Pharmacy, Chisinau, Republic of Moldova

9. **Pasat Ecaterina**- INTERVENTIONAL TREATMENT IN ELDERLY PATIENTS WITH SEVERE AORTIC VALVE STENOSIS AND CORONARY ARTERY DISEASE.

Scientific advisor: Abras Marcel, MD, Associate Professor, Discipline of Cardiology, Department of Internal Medicine, *Nicolae Testemitanu* State University of Medicine and Pharmacy, Chisinau, Republic of Moldova

10. **Pruteanu Albert**- SECONDARY PREVENTION OF SUDDEN CARDIAC DEATH IN PATIENT WITH ISCHEMIC HEART DISEASE

Scientific advisor: Vetrilă Snejana, PhD, MD, Associate Professor, Discipline of Cardiology, Department of Internal Medicine, *Nicolae Testemitanu* State University of Medicine and Pharmacy, Chisinau, Republic of Moldova

11. **Rachel Manoj** – A COMPARATIVE STUDY ON THE OPTIMAL SHUNT TYPES FOR SURGICAL MANAGEMNET OF TOF

Scientific advisor: Tcaciuc Angela, MD, PhD, Associate Professor, Discipline of Cardiology, Department of Internal Medicine, *Nicolae Testemitanu* State University of Medicine and Pharmacy, Chisinau, Republic of Moldova

12. **Rusu Adriana**- NOSOCOMIAL INFECTIVE ENDOCARDITIS IN THE BACKGROUND OF HYPERTROPHIC CARDIOMIOPATY, CLINICAL CASE

Scientific advisor: Grejdieru Alexandra, PhD, MD, Associate Professor, Discipline of Cardiology, Department of Internal Medicine, *Nicolae Testemitanu* State University of Medicine and Pharmacy, Chisinau, Republic of Moldova.

13. **Savov Petru** – CHALLENGING CLINICAL CASE

Scientific advisor: Darciuc Radu, MD, Arrhythmology and Electrophysiology Cardiac/ Cardiology, Medpark International Hospital

14. **Spatari Anastasia**- CARDIAC ABSCESS, FATAL COMPLICATION IN INFECTIVE ENDOCARDITIS, CLINICAL CASE

Scientific advisor: Grejdieru Alexandra, PhD, MD, Associate Professor, Discipline of Cardiology, Department of Internal Medicine, *Nicolae Testemitanu* State University of Medicine and Pharmacy, Chisinau, Republic of Moldova

15. Stoian Ana- DEEP VENOUS THROMBOSIS COMPLICATED WITH ACUTE PULMONARY EMBOLISM, A CASE OF A PATIENT WITH PROVEN THROMBOPHILIA

Scientific advisors: Ochisor Viorica, PhD, MD, Associate Professor, Discipline of Cardiology, Department of Internal Medicine, *Nicolae Testemitanu* State University of Medicine and Pharmacy, Chisinau, Republic of Moldova; Argint Ecaterina, MD, Associate Professor, Discipline of Cardiology, Department of Internal Medicine, *Nicolae Testemitanu* State University of Medicine and Pharmacy, Chisinau, Republic of Moldova

16. Talasimov Irina- THE CARDIOTOXICITY OF LOCAL ANESTHETICS

Scientific advisor: Grejdieru Alexandra, PhD, MD, Associate Professor, Discipline of Cardiology, Department of Internal Medicine, *Nicolae Testemitanu* State University of Medicine and Pharmacy, Chisinau, Republic of Moldova.

17. Tofan Lucian – THE SIGNIFICANT IMPACT OF ARTIFICIAL INTELLIGENCE IN TAVI

Scientific advisor: Abras Marcel, MD, Associate Professor, Discipline of Cardiology, Department of Internal Medicine, *Nicolae Testemitanu* State University of Medicine and Pharmacy, Chisinau, Republic of Moldova

18. Triboi Valentina- CANCER-ASSOCIATED THROMBOSIS

Scientific advisor: Argint Ecaterina, MD, Associate Professor, Discipline of Cardiology, Department of Internal Medicine, *Nicolae Testemitanu* State University of Medicine and Pharmacy, Chisinau, Republic of Moldova

19. Vlad Ariana- STUDY OF RISK FACTORS IN PATIENTS WITH AORTIC STENOSIS

Scientific advisor: Mazur-Nicorici Lucia, MD, PhD, Professor, Discipline of Cardiology, Department of Internal Medicine, *Nicolae Testemitanu* State University of Medicine and Pharmacy, Chisinau, Republic of Moldova.

VIII. JOURNEY INTO THE BODY: PHYSIOLOGY AND PATHOLOGY UNVEILED

Chairman: Melnic Eugen, PhD, Associate Professor

Members: Cobet Valeriu, PhD, Associate Professor

Lozovanu Svetlana, PhD, Associate Professor

Vişnevschi Anatolie, PhD, Professor

Vovc Victor, PhD, Professor

Secretary: Candice Dreayah, Grosu Maria, Lungu Alexandrina

1. Andrieş Elena - CHRONIC STRESS AND ITS INDUCING FACTORS IN A GROUP OF SECOND-YEAR MEDICAL STUDENTS

Scientific advisor: Dragan Boris, MD, Associate Professor, Department of Human Physiology and Biophysics, *Nicolae Testemitanu* State University of Medicine and Pharmacy, Chisinau, Republic of Moldova

2. Asavei Letiția - TRANSTHYRETIN CARDIAC AMYLOIDOSIS AND BONE SCINTIGRAPHY: STATE OF THE ART DETECTION IN RARE DISEASES

Scientific advisor: Ionescu Teodor Marian; Nuclear Medicine Specialist; University Assistant in Pathophysiology; University of Medicine and Pharmacy "Gr. T. Popa" Iasi

3. Cozma Mihaela- AN IN-DEPTH INVESTIGATION OF SYNCHRONOUS MULTIPLE PRIMARY TUMOURS (MULTICENTRIC AND BIVALENT) IN THE PANCREAS AND COLON

Scientific advisor: Melnic Eugen, Associate Professor, MD, Department of Morphopathology, *Nicolae Testemitanu* State University of Medicine and Pharmacy, Chisinau, Republic of Moldova.

4. Candice Dreyah - CHRONOTYPE IN PATIENTS WITH SLEEP APNEA HEADACHES

Scientific advisor: Vovc Victor, MD, PhD, Professor, Department of Human Physiology and Biophysics, *Nicolae Testemitanu* State University of Medicine and Pharmacy, Chisinau, Republic of Moldova; Lupuşor Adrian, PhD, Assistant Professor, Department of Human Physiology and Biophysics, *Nicolae Testemitanu* State University of Medicine and Pharmacy, Chisinau, Republic of Moldova

5. Grosu Maria - NEW ERA OF TREATMENT FOR SPINA BIFIDA: STEM CELLS-BASED IN UTERO THERAPIES

Scientific advisor: Todiraş Stela, MD, Associate Professor, Department of pathophysiology, *Nicolae Testemitanu* State University of Medicine and Pharmacy of the Republic of Moldova

6. Gumeniuc Alexandra- THE PATHOPHYSIOLOGY OF IRON DEFICIENCY IN THE BODY, ENDANGERMENT OF THE ABSORPTION, TRANSPORT AND STORAGE OF THE CATION. THE MAIN MECHANISMS.

Scientific advisor: Rotaru Victoria, MD, Associate Professor, Department of Pathophysiology and Clinical Pathophysiology, *Nicolae Testemitanu* State University of Medicine and Pharmacy, Chisinau, Republic of Moldova

7. Hamdy El Alamy - SIGNIFICANCE OF CIRCADIAN RHYTHM FOR CARDIAC HOMEOSTASIS

Scientific advisor: Lozovanu Svetlana, MD, Associate Professor, Head of Department of Human Physiology and Biophysics, *Nicolae Testemitanu* State University of Medicine and Pharmacy, Chisinau, Republic of Moldova; Lupușor Adrian, PhD, Assistant Professor, Department of Human Physiology and Biophysics, *Nicolae Testemitanu* State University of Medicine and Pharmacy, Chisinau, Republic of Moldova

8. Lee Hagag - CIRCADIAN RHYTHM DISTURBANCES AND IMMUNE SYSTEM

Scientific advisor: Vovc Victor, MD, PhD, Professor, Department of Human Physiology and Biophysics, *Nicolae Testemitanu* State University of Medicine and Pharmacy, Chisinau, Republic of Moldova; Lupușor Adrian, PhD, Assistant Professor, Department of Human Physiology and Biophysics, *Nicolae Testemitanu* State University of Medicine and Pharmacy, Chisinau, Republic of Moldova

9. Lior Lugassy - MATERNAL CIRCADIAN RHYTHM AND SLEEP DISORDERS AS A RISK FACTOR FOR AUTISM SPECTRUM DISORDER

Scientific advisor: Vovc Victor, MD, PhD, Professor, Department of Human Physiology and Biophysics, *Nicolae Testemitanu* State University of Medicine and Pharmacy, Chisinau, Republic of Moldova; Lupușor Adrian, PhD, Assistant Professor, Department of Human Physiology and Biophysics, *Nicolae Testemitanu* State University of Medicine and Pharmacy, Chisinau, Republic of Moldova

10. Lungu Alexandrina - THE IMPORTANCE OF DAYLIGHT EFFECTS ON THE CIRCADIAN RHYTHM AND NEGATIVE CONSEQUENCES OF EVENING LIGHTENING OF DISPLAYS

Scientific advisor: Vovc Victor, MD, PhD, Professor, Department of Human Physiology and Biophysics, *Nicolae Testemitanu* State University of Medicine and Pharmacy, Chisinau, Republic of Moldova; Lupușor Adrian, PhD, Assistant Professor, Department of Human Physiology and Biophysics, *Nicolae Testemitanu* State University of Medicine and Pharmacy, Chisinau, Republic of Moldova

11. Mardari Cristina - THE INFLUENCE OF CIRCADIAN RHYTHMS IN THE EXACERBATION OF BRONCHIAL ASTHMA

Scientific advisor: Lozovanu Svetlana, MD, Associate Professor, Head of Department of Human Physiology and Biophysics, *Nicolae Testemitanu* State University of Medicine and Pharmacy, Chisinau, Republic of Moldova

12. Rudic Ciprian- AUTONOMIC NERVOUS SYSTEM ACTIVITY PARAMETERS IN INDIVIDUALS WITH AFFECTIVE DISORDERS

Scientific advisor: Lozovanu Svetlana, MD, Associate Professor, Head of Department of Human Physiology and Biophysics, *Nicolae Testemitanu* State University of Medicine and Pharmacy, Chisinau, Republic of Moldova

13. Semionov Marius - THE ROLE OF CARDIAC FIBROSIS IN DIASTOLIC HEART DYSFUNCTION

Scientific advisor: Borș Eleonora, MD, Associate Professor, Department of Pathophysiology and Clinical Pathophysiology, *Nicolae Testemitanu* State University of Medicine and Pharmacy, Chisinau, Republic of Moldova

14. Stoica Tatiana- MORPHOPATHOLOGY SIGNIFICANCE IN DETECTION AND DIFFERENTIAL DIAGNOSIS OF GASTRITIS

Scientific advisor: Melnic Eugen, Associate Professor, MD, Department of Morphopathology, *Nicolae Testemitanu* State University of Medicine and Pharmacy, Chisinau, Republic of Moldova

15. Stratu Teodora - THE IMPORTANCE OF THE CIRCADIAN RHYTHM IN THE MUSCULOSKELETAL DEVELOPMENT OF CHILDREN

Scientific advisor: Vovc Victor, MD, PhD, Professor, Department of Human Physiology and Biophysics, *Nicolae Testemitanu* State University of Medicine and Pharmacy, Chisinau, Republic of Moldova; Lupușor Adrian, PhD, Assistant Professor, Department of Human Physiology and Biophysics, *Nicolae Testemitanu* State University of Medicine and Pharmacy, Chisinau, Republic of Moldova

16. Știrbu Dana- HEART RATE (ARRHYTHMIAS) IN OBSTRUCTIVE SLEEP APNEA/HYPOPNEA SYNDROM

Scientific advisors: Grejdieru Alexandra, PhD, MD, Associate Professor, Discipline of Cardiology, Department of Internal Medicine, *Nicolae Testemitanu* State University of Medicine and Pharmacy, Chisinau, Republic of Moldova; Lupușor Adrian, PhD, Assistant Professor, Department of Human Physiology and Biophysics, *Nicolae Testemitanu* State University of Medicine and Pharmacy, Chisinau, Republic of Moldova

17. Trocin Cristina- THE MORPHOPATHOLOGICAL ASPECT OF METABOLIC-ASSOCIATED FATTY LIVER DISEASE

Scientific advisor: Pretula Ruslan, MD, Associate Professor, Department of Morphopathology, *Nicolae Testemitanu* State University of Medicine and Pharmacy, Chisinau, Republic of Moldova

IX. MINDS MATTER: EXPLORING INNOVATIONS IN MENTAL HEALTH

Chairman: Chihai Jana, MD, PhD, Associate Professor

Members: Boronin Larisa, MD, PhD, Associate Professor

Carasu Ghenadie, MD, PhD, Associate Professor

Nastas Igor, MD, PhD, Associate Professor

Oprea Valentin, MD, PhD, Associate Professor

Secretary: Delix Eldo

Special speaker: Ancuța Gabriela Alexia, 6 form student, UK, Graduate of the 2023 Clinical Neurosciene Immersion Experience, Stanford Department of Psychiatry and Behavioral Sciences, Standford University School of Medicine- CLINICAL NEUROSCIENCE IN FOCUS- HOW TO ORGANISE A CLINICAL PROJECT ON EATING DISORDERS?

- 1. Ayisha Thayyil - LIGHT THERAPY FOR SEASONAL AFFECTIVE DISORDER (SAD): A META ANALYSIS OF EFFICACY**

Scientific advisor: Nastas Igor, MD, PhD, Associate Professor, Department of Mental Health, Medical Psychology and Psychotherapy, *Nicolae Testemitanu* State University of Medicine and Pharmacy, Chisinau, Republic of Moldova

- 2. Baudzei Carina- HOW MENTAL RETARDATION AND AUTISM SYMPTOMS ARE MORE PRONOUNCED IN BOYS WITH FRAGILE X SYNDROME DUE TO LACK OF GENETIC COMPENSATION**

Scientific advisor: Babin Cezar, Associate Professor, Department of Mental Health, Medical Psychology and Psychotherapy, *Nicolae Testemitanu* State University of Medicine and Pharmacy, Chisinau, Republic of Moldova; Boronin Larisa, Associate Professor, Department of Mental Health, Medical Psychology and Psychotherapy, *Nicolae Testemitanu* State University of Medicine and Pharmacy, Chisinau, Republic of Moldova

- 3. Bivol Mădălina- SUBSTANCE USE DISORDER IN INDIVIDUALS WITH SCHIZOPHRENIA**

Scientific advisor: Chihai Jana, MD, Associate Professor, Department of Mental Health, Medical Psychology and Psychotherapy, *Nicolae Testemitanu* State University of Medicine and Pharmacy of the Republic of Moldova; Senior Mental Health Advisor for MENSANA Project

- 4. Caraman Natalia- EATING DISODERS AMONG MEDICAL STUDENTS**

Scientific advisor: Chihai Jana, MD, Associate Professor, Department of Mental Health, Medical Psychology and Psychotherapy, *Nicolae Testemitanu* State University of Medicine and Pharmacy of the Republic of Moldova; Senior Mental Health Advisor for MENSANA Project

5. Covalenco Diana- VIDEO GAMES IN PSYCHOSOCIAL REHABILITATION FOR SCHIZOPHRENIA PATIENTS

Scientific advisor: Chihai Jana, MD, Associate Professor, Department of Mental Health, Medical Psychology and Psychotherapy, *Nicolae Testemitanu* State University of Medicine and Pharmacy of the Republic of Moldova; Senior Mental Health Advisor for MENSANA Project

6. Delix Eldo - WAR AND MENTAL HEALTH

Scientific advisor: Dr.Shine. V. Athithottam, PhD, Clinical Psychology, Department of Psychiatry and National Drug Dependence treatment center- All India institute of medical sciences (AIIMS), New Delhi.

7. Donea Carolina - DIAGNOSTIC CRITERIA OF SUICIDAL AND PARASUICIDAL BEHAVIOR

Scientific advisor: Nastas Igor, MD, PhD, Associate Professor, Department of Mental Health, Medical Psychology and Psychotherapy, *Nicolae Testemitanu* State University of Medicine and Pharmacy, Chisinau, Republic of Moldova

8. Filimon Maria- DEPRESSION AND ANXIETY IN PATIENTS WITH EPILEPSY

Scientific advisor: Nacu Anatol, MD, PhD, Associate Professor, Department of Mental Health, Medical Psychology and Psychotherapy, *Nicolae Testemitanu* State University of Medicine and Pharmacy, Chisinau, Republic of Moldova

9. Iova Tatiana- GENERAL ASPECTS REGARDING STUDENTS' ANXIETY

Scientific advisor: Daniliuc Natalia, Doctor of Psychology, Associate Professor, Department of Social Medicine and Management, *Nicolae Testemitanu* State University of Medicine and Pharmacy, Chisinau, Republic of Moldova

10. Rotarciuc Jana - DIET AND DEPRESSION

Scientific advisor: Nastas Igor, MD, PhD, Associate Professor, Department of Mental Health, Medical Psychology and Psychotherapy, *Nicolae Testemitanu* State University of Medicine and Pharmacy, Chisinau, Republic of Moldova

11. Sanduleac Lidia- RETROSPECTIVE STUDY OF BORDERLINE PERSONALITY DISORDER DIAGNOSED AND HOSPITALIZED IN CLINICAL HOSPITAL OF PSYCHIATRY

Scientific advisor: Deliv Inga, MD, Associate Professor, Department of Mental Health, Medical Psychology and Psychotherapy, *Nicolae Testemitanu* State University of Medicine and Pharmacy, Chisinau, Republic of Moldova

12. Tapu Andreea- BORDERLINE PERSONALITY DISORDER IN CHILDREN AND ADOLESCENTS

Scientific advisor: Eșanu Andrei, Assistant Professor, Department of Mental Health, Medical Psychology and Psychotherapy, *Nicolae Testemitanu* State University of Medicine and Pharmacy, Chisinau, Republic of Moldova

13. Terzi Iulia- GENDER DYSPHORIA: UNDERSTANDING AND ASSESSMENT

Scientific advisor: Chihai Jana, MD, Associate Professor, Department of Mental Health, Medical Psychology and Psychotherapy, *Nicolae Testemitanu* State University of Medicine and Pharmacy of the Republic of Moldova; Senior Mental Health Advisor for MENSANA Project

14. Titorog Tudor - THERAPEUTIC INTERVENTIONS IN HYPOCHONDRIA

Scientific advisor: Nacu Anatol, MD, PhD, Associate Professor, Department of Mental Health, Medical Psychology and Psychotherapy, *Nicolae Testemitanu* State University of Medicine and Pharmacy, Chisinau, Republic of Moldova

X. MIRACLES OF LIFE: INNOVATIONS IN OBSTETRICS AND GYNECOLOGY

Chairman: Cernetchi Olga, PhD, Professor

Members: Catrinici Rodica, PhD, Associate Professor

Iliadi-Tulbure Corina, PhD, Associate Professor

Mitriuc Diana, PhD, Associate Professor

Secretary: Doncilă Ilinca, Manic Milena, Vieru Nicoleta

1. Budianu Cătălina - HOW TO BETTER LEARN HYPERTENSIVE DISORDERS OF PREGNANCY THROUGH SIMULATION IN REPUBLIC OF MOLDOVA

Scientific advisor: Iliadi-Tulbure Corina, MD, Associate Professor, Obstetrics and Gynecology Department, *Nicolae Testemitanu* State University of Medicine and Pharmacy, Chisinau, Republic of Moldova; Cospormac Viorica, PhD, Associate Professor, Anesthesiology and Resuscitation Department No.2, *Nicolae Testemitanu* State University of Medicine and Pharmacy, Chisinau, Republic of Moldova

2. Burdeniuc Irina - ISOLATED FALLOPIAN TUBE TORSION ASSOCIATED WITH PREGNANCY: A CASE REPORT

Scientific advisor: Bologan Ion, MD, Associate Professor, Obstetrics, Gynaecology and Human Reproduction Discipline, Obstetrics and Gynaecology Department, *Nicolae Testemitanu* State University of Medicine and Pharmacy, Chisinau, Republic of Moldova

3. Căldare Arina - MEDICAL AND SOCIAL PATTERNS OF PELVIC INFLAMMATORY DISEASE IN THE REPUBLIC OF MOLDOVA

Scientific advisors: Iliadi-Tulbure Corina, MD, Associate Professor, Obstetrics and Gynecology Department, *Nicolae Testemitanu* State University of Medicine and Pharmacy, Chisinau, Republic of Moldova; Cauș Cătălin, PhD, Associate Professor

4. Caliga Gheorghe- PROFILE OF WOMEN WITH PREGNANCY ACHIEVED THROUGH IN VITRO FERTILIZATION

Scientific advisor: Dondiuc Iurie, PhD, Associate Professor, Obstetrics and Gynaecology Department, *Nicolae Testemitanu* State University of Medicine and Pharmacy, Chisinau, Republic of Moldova

5. Cemortan Maria - ASSESSMENT OF THE CASES OF POSTPARTUM HAEMORRAGE IN MULTIPAROUS WOMEN

Scientific advisor: Iliadi-Tulbure Corina, MD, Associate Professor, Obstetrics and Gynecology Department, *Nicolae Testemitanu* State University of Medicine and Pharmacy, Chisinau, Republic of Moldova

6. Ciobanu Miruna-Olguța - PRENATAL DIAGNOSIS OF FETAL FACIAL ABNORMALITIES IN THE FIRST TRIMESTER OF PREGNANCY

Scientific advisors: Lozneau Ludmila, Department of Morphofunctional Sciences I, Grigore T. Popa University of Medicine and Pharmacy, Iași, Romania; Toma Bogdan, Department of Obstetrics and Gynecology, “Cuza Vodă” Hospital, Iași, Romania

7. Coșpormac Mihaela - SIMULATION AS AN EFFICIENT TRAINING TOOL IN OBSTETRIC EMERGENCIES

Scientific advisors: Iliadi-Tulbure Corina, MD, Associate Professor, Obstetrics and Gynecology Department, *Nicolae Testemitanu* State University of Medicine and Pharmacy, Chisinau, Republic of Moldova; Cospormac Viorica, PhD, Associate Professor, Anesthesiology and Resuscitation Department No.2, *Nicolae Testemitanu* State University of Medicine and Pharmacy, Chisinau, Republic of Moldova

8. Darii Corina - POSTPARTUM SPONTANEOUS HEMOPERITONEUM AND ENDOMETRIOSIS – CASE REPORT

Scientific advisor: Codreanu Nadejda, MD, Associate Professor, Obstetrics, Gynaecology and Human Reproduction Discipline, Obstetrics and Gynaecology Department, *Nicolae Testemitanu* State University of Medicine and Pharmacy, Chisinau, Republic of Moldova

9. Dimitris Marin - UNINTENDED PREGNANCY DESPITE IUD, COMPLICATED WITH HUGE FIBROID AND SCARRED UTERUS, A RARE CASE REPORT

Scientific advisor: Furau Cristian George, PhD, Professor, Department of Biology and Life Sciences, Vasile Goldiș Western University, Arad

10. Gordaș Cătălin - A COMPREHENSIVE APPROACH TO IMPROVING MANAGEMENT IN POST-PARTUM HAEMORRHAGE

Scientific advisors: Cospormac Viorica, PhD, Associate Professor, Anesthesiology and Resuscitation Department No.2, *Nicolae Testemitanu* State University of Medicine and Pharmacy, Chisinau, Republic of Moldova; Iliadi-Tulbure Corina, MD, Associate Professor, Obstetrics and Gynecology Department, *Nicolae Testemitanu* State University of Medicine and Pharmacy, Chisinau, Republic of Moldova

11. Goreacii Ana - IS MENSTRUAL BLOOD A POSSIBLE SUSTAINABLE SOURCE OF STEM CELLS FOR REGENERATIVE MEDICINE?

Scientific advisor: Nacu Viorel, PhD, Professor, Department of Anatomy and Clinical Anatomy, Head of Laboratory of Tissue Engineering and Cellular Culture, *Nicolae Testemitanu* State University of Medicine

12. Guțu Laura - THE INFLUENCE OF PREGNANCY ON THE EVOLUTION OF UTERINE MYOMA

Scientific advisor: Marian-Pavlenco Angela, MD, PhD, Associate Professor, Obstetrics, Gynaecology and Human Reproduction Discipline, Obstetrics and Gynaecology Department, *Nicolae Testemitanu* State University of Medicine and Pharmacy, Chisinau, Republic of Moldova

13. Jurca Denisa-Amalia- WHAT DO STUDENTS KNOW ABOUT SEXUALLY TRANSMITTED DISEASES AND METHODS OF CONTRACEPTION? A SURVEY STUDY ABOUT KNOWLEDGE AND SEXUAL RISK BEHAVIOURS AMONG UNIVERSITY STUDENTS

Scientific advisor: Furau Cristian George, PhD, Professor, Department of Biology and Life Sciences, Vasile Goldiș Western University, Arad

14. Manic Milena - TINY SEEDS, MIGHTY STRUGGLES: PREGNANCY EVOLUTION IN INTRAUTERINE GROWTH RESTRICTION

Scientific advisor: Iliadi-Tulbure Corina, MD, Associate Professor, Obstetrics and Gynecology Department, *Nicolae Testemitanu* State University of Medicine and Pharmacy, Chisinau, Republic of Moldova

15. Marian Andriana - LIPID PROFILE VARIATIONS DURING PREGNANCY

Scientific advisor: Dondiuc Iurie, PhD, Associate Professor, Obstetrics and Gynaecology Department, *Nicolae Testemitanu* State University of Medicine and Pharmacy, Chisinau, Republic of Moldova

16. Micinschi Nadina - GESTATIONAL DIABETES MELLITUS AND MACROSOMIA: MUNICIPAL CLINICAL HOSPITAL "GHEORGHE PALADI" EXPERIENCE

Scientific advisor: Catrinici Rodica, MD, Associate Professor, Obstetrics, Gynaecology and Human Reproduction Discipline, Obstetrics and Gynaecology Department, *Nicolae Testemitanu* State University of Medicine and Pharmacy, Chisinau, Republic of Moldova

17. Popa Iulia - CONDUCT OF PATIENTS WITH CERVICAL PATHOLOGY

Scientific advisor: Catrinici Rodica, MD, Associate Professor, Obstetrics, Gynaecology and Human Reproduction Discipline, Obstetrics and Gynaecology Department, *Nicolae Testemitanu* State University of Medicine and Pharmacy, Chisinau, Republic of Moldova.

18. Prepelită Mădălina- CASE REPORT OF A PERFORATED INTRAUTERINE DEVICE INTO SIGMOID COLON

Scientific advisor: Friptu Valentin, MD, PhD, Professor, Head of Obstetrics, Gynaecology and Human Reproduction Discipline, Obstetrics and Gynaecology Department, *Nicolae Testemitanu* State University of Medicine and Pharmacy, Chisinau, Republic of Moldova.

19. Valache Mădălina - THE PECULIARITIES OF THE PSYCHOLOGICAL PROFILE IN THE PERINATAL PERIOD IN PREGNANT ADOLESCENTS

Scientific advisor: Iliadi-Tulbure Corina, MD, Associate Professor, Obstetrics and Gynecology Department, *Nicolae Testemitanu* State University of Medicine and Pharmacy, Chisinau, Republic of Moldova; Jubîrcă Svetlana, PhD

20. Vataman Elena- OVARIAN FUNCTION IN WOMEN OF REPRODUCTIVE AGE AFTER HYSTERECTOMY

Scientific advisor: Cernetchi Olga, PhD, Professor, Head of Obstetrics and Gynaecology Department, *Nicolae Testemitanu* State University of Medicine and Pharmacy, Chisinau, Republic of Moldova

21. Vieru Nicoleta- PERINATAL OUTCOMES IN PREGNANCY WITH GESTATIONAL DIABETES

Scientific advisor: Grejdean-Voloceai Victoria, MD, Associate Professor, Obstetrics, Gynaecology and Human Reproduction Discipline, Obstetrics and Gynaecology Department, *Nicolae Testemitanu* State University of Medicine and Pharmacy, Chisinau, Republic of Moldova

22. Zagorceanu Cezar - IMMUNOLOGICAL PECULIARITIES AND THE SPECIFICS OF THE USE OF THERAPEUTIC OZONE IN WOMEN WITH THE RISK OF INFERTILITY

Scientific advisor: Iliadi-Tulbure Corina, MD, Associate Professor, Obstetrics and Gynecology Department, *Nicolae Testemitanu* State University of Medicine and Pharmacy, Chisinau, Republic of Moldova

XI. PHARMACY FRONTIER: ADVANCEMENTS IN PHARMACEUTICAL SCIENCES

Chairman: Ciobanu Nicolae, PhD, Associate Professor

Members: Adauji Stela, PhD, Associate Professor

Calalb Tatiana, PhD, Professor

Scutari Corina, PhD, Associate Professor

Uncu Livia, PhD, Associate Professor

Secretary: Cojocari Cristina, Stahi Cristina

1. Adam Ion - STUDY OF MEDICATIONS DESIGNED FOR URETHRAL ADMINISTRATION

Scientific advisor: Ciobanu Nicolae, PhD, Associate professor, Department of Drug Technology, *Nicolae Testemitanu* State University of Medicine and Pharmacy, Chisinau, Republic of Moldova

2. Andronachi Gabriela - ACTION OF BIOPHARMACEUTICAL FACTORS ON DRUG BIOAVAILABILITY

Scientific advisor: Valica Vladimir, PhD, Professor, Head of Department of Pharmaceutical and Toxicological Chemistry, *Nicolae Testemitanu* State University of Medicine and Pharmacy, Chisinau, Republic of Moldova

3. Berzan Vladislava - THE ROLE OF POLYMERS IN THE DEVELOPMENT OF SOME ADHESIVE FORMS

Scientific advisor: Ciobanu Nicolae, PhD, Associate professor, Department of Drug Technology, *Nicolae Testemitanu* State University of Medicine and Pharmacy, Chisinau, Republic of Moldova

4. Boguş Dorin - ANTIBACTERIAL ACTIVITY OF BASIL ESSENTIAL OIL

Scientific advisor: Donici Elena, Assistant Professor, Department of Pharmaceutical and Toxicological Chemistry, *Nicolae Testemitanu* State University of Medicine and Pharmacy, Chisinau, Republic of Moldova

5. Ciorba Alina - EVALUATION OF PHENOLIC COMPOUNDS IN ETHANOLIC EXTRACT OF CICHORIUM INTYBUS L. BY HPLC METHOD

Scientific advisor: Valica Vladimir, PhD, Professor, Head of Department of Pharmaceutical and Toxicological Chemistry, *Nicolae Testemitanu* State University of Medicine and Pharmacy, Chisinau, Republic of Moldova

6. Ciurea Laura - ANTI-CANCER COMPOUNDS IN BRASSICA VEGETABLES

Scientific advisor: Calalb Tatiana, PhD, Professor, Department of Pharmacognosy and Pharmaceutical Botany, *Nicolae Testemitanu* State University of Medicine and Pharmacy of the Republic of Moldova

7. Cojocari Cristina - THE WAYS TO IMPROVE DRUG STABILITY

Scientific advisor: Uncu Livia, PhD, Associate Professor, Department of Pharmaceutical and Toxicological Chemistry, *Nicolae Testemitanu* State University of Medicine and Pharmacy

8. Costea Anastasia - LIPOSOME BIOPHARMACEUTIC AND NANOPARTICLES IN HUMAN BODY

Scientific advisor: Anton Mihail, Associate Professor, Department of Drug Technology, *Nicolae Testemitanu* State University of Medicine and Pharmacy, Chisinau, Republic of Moldova

9. Diaconu Alina - THE PHARMACIST'S ROLE IN THE THERAPEUTIC PARTNERSHIP RELATIONSHIP WITH THE ELDERLY PATIENT

Scientific advisor: Aduji Stela, PhD, Associate Professor, Vasile Procopisin Department of Social Pharmacy, *Nicolae Testemitanu* State University of Medicine and Pharmacy, Chişinău, Republic of Moldova

10. Diaconu Ion - DRUG INTERACTIONS AND ERRORS IN THE TREATMENT OF HYPERTENSION IN THE ELDERLY

Scientific advisor: Scutari Corina, MD, Associate Professor, Head of Department of Pharmacology and Clinical Pharmacy, *Nicolae Testemitanu* State University of Medicine and Pharmacy of the Republic of Moldova

11. Golovei Ina - COMPARATIVE ANALYSIS OF THE NATIONAL AND INTERNATIONAL LEGISLATIVE FRAMEWORK REGARDING THE STORAGE OF MEDICINAL PRODUCTS FOR HUMAN USE

Scientific advisor: Aduji Stela, PhD, Associate Professor, Vasile Procopisin Department of Social Pharmacy, *Nicolae Testemitanu* State University of Medicine and Pharmacy, Chişinău, Republic of Moldova

12. Golub Alexandrina - HYSSOPUS OFFICINALIS L. THE SOURCE OF DIOSMIN AS THE THERAPEUTIC AGENT IN DIFFERENT DISEASES

Scientific advisor: Calalb Tatiana, PhD, Professor, Department of Pharmacognosy and Pharmaceutical Botany, *Nicolae Testemitanu* State University of Medicine and Pharmacy of the Republic of Moldova

13. Groian Alexandra - THE PHARMACIST'S ROLE IN THE MANAGEMENT OF THE ELDERLY'S MEDICATION AT HOME

Scientific advisor: Aduji Stela, PhD, Associate Professor, Vasile Procopisin Department of Social Pharmacy, *Nicolae Testemitanu* State University of Medicine and Pharmacy, Chişinău, Republic of Moldova

14. Iepure Maria - STUDY ON CLINICAL CASES OF ATOPIC DERMATITIS IN CHILDREN

Scientific advisor: Scutari Corina, MD, Associate Professor, Head of Department of Pharmacology and Clinical Pharmacy, *Nicolae Testemitanu* State University of Medicine and Pharmacy of the Republic of Moldova

15. Lupușor Tatiana - PHYTOCHEMICAL ANALYSIS OF HYSSOPUS OFFICINALIS L. FROM REPUBLIC OF MOLDOVA

Scientific advisor: Benea Anna, Assistant Professor, Department of Pharmacognosy and Pharmaceutical Botany, *Nicolae Testemitanu* State University of Medicine and Pharmacy, Chisinau, Republic of Moldova

16. Nicolăescu Maria - THE USE OF MAGNESIUM SALTS IN THE THERAPY OF ARTERIAL HYPERTENSION

Scientific advisor: Valica Vladimir, PhD, Professor, Head of Department of Pharmaceutical and Toxicological Chemistry, *Nicolae Testemitanu* State University of Medicine and Pharmacy, Chisinau, Republic of Moldova

17. Silnic Tatiana - SOME ASPECTS OF OPTIMIZATION GERIATRIC PHARMACOTHERAPY

Scientific advisor: Guranda Diana, PhD, Associate Professor, Department of Drug Technology, *Nicolae Testemitanu* State University of Medicine and Pharmacy, Chisinau, Republic of Moldova

18. Stahi Cristina - PROSPECTS FOR OBTAINING LIPOSOMES WITH STANDARDIZED PLANT EXTRACT

Scientific advisor: Ciobanu Cristina, PhD, Associate Professor, Department of Drug Technology, *Nicolae Testemitanu* State University of Medicine and Pharmacy, Chisinau, Republic of Moldova

XII. REVOLUTIONIZING CANCER CARE: INNOVATIONS IN ONCOLOGY

Chairman: Şchiopu Victor, PhD, Assistant Professor
Buruiană Sanda, PhD, Associate Professor
Olaru Andrei, PhD, Assistant Professor

Secretary: Nizamudeen Fathima, Saini Jai

1. **Ameena Jasmin Rahman Narekode Paramba Mujeeb Rahman**- HISTOLOGICAL AND IMMUNOHISTOCHEMICAL PARTICULARITY OF PECTORALIS GLAND CANCER. RETROSPECTIVE STUDY IN ONCOLOGY INSTITUTE FROM MOLDOVA (2017-2022)

Scientific advisor: Şveţ Veronica, PhD, Assistant Professor, Department of Oncology, *Nicolae Testemitanu* State University of Medicine and Pharmacy, Chisinau, Republic of Moldova

2. **Nizamudeen Fathima** - COMBINED ADMINISTRATION OF DOCETAXEL AND APIGENIN INHIBITS BREAST CANCER CELL SURVIVAL AND MIGRATION

Scientific advisor: Suat Erdogan, Riza Serttas -Department of Molecular Biology, Trakya University, School of Medicine, Edirne, Türkiye

3. **Gorea Diana Valentina** - BONE SCINTIGRAPHY - THE CONER STONE IN TREATMENT MANAGEMENT FOR OSTEOPHILIC NEOPLASMS

Scientific advisor: Ionescu Teodor Marian

4. **Josanu Marina** - EPIDEMIOLOGICAL AND CLINICAL ASPECTS OF INDOLENT EXTRANODAL NON-HODKIN'S LYMPHOMA IN THE REPUBLIC OF MOLDOVA

Scientific advisor: Buruiana Sanda, PhD, Associate Professor, Head of Hematology Discipline, Department of Internal Medicine, *Nicolae Testemitanu* State University of Medicine and Pharmacy, Chisinau, Republic of Moldova

5. **Ojovan Vitalina** - THE ESSENCE OF THE BIOPSYCHOSOCIAL MODEL IN MEDICAL REHABILITATION

Scientific advisor: Mereuță Ion, MD, PhD, Professor, Department of Oncology, *Nicolae Testemitanu* State University of Medicine and Pharmacy, Chisinau, Republic of Moldova

6. **Pirlii Iulius** - CLINICAL AND HEMATOLOGICAL FEATURES AND DIAGNOSTIC OPTIONS IN EXTRANODAL AGGRESSIVE NON-HODGKIN'S LYMPHOMAS

Scientific advisor: Musteata Vasile, PhD, Associate Professor, Hematology Discipline, Department of Internal Medicine, *Nicolae Testemitanu* State University of Medicine and Pharmacy, Chisinau, Republic of Moldova

7. **Pusca Adelina** - TREATMENT OF ACUTE NON-LYMPHOBLASTIC LEUKEMIAS

Scientific advisor: Musteata Vasile, PhD, Associate Professor, Hematology Discipline, Department of Internal Medicine, *Nicolae Testemitanu* State University of Medicine and Pharmacy, Chisinau, Republic of Moldova

8. **Rotaru Dan** - THE OCCURRENCE OF VENOUS THROMBOEMBOLISM AT PATIENTS UNDERGOING NEOADJUVANT CHEMOTHERAPY

Scientific advisor: Şchiopu Victor, PhD, Assistant Professor, Department of Oncology, *Nicolae Testemitanu* State University of Medicine and Pharmacy, Chisinau, Republic of Moldova

9. **Saini Jai** - MALE BREAST CANCER: EPIDEMIOLOGY AND RISK FACTORS

Scientific advisor: Bacalim Lilia, MD, Associate Professor, Department of Oncology, *Nicolae Testemitanu* State University of Medicine and Pharmacy, Chisinau, Republic of Moldova

10. **Tomuţ Alexandru-Nicuşor** - ANOMALOUS 12MM MELANOMA

Scientific advisor: Sabău Adrian-Horaţiu Asist univ. drd., Pathology department, Country Hospital of Targu Mures, University of Medicine, Pharmacy, Science and Technology “George Emil Palade” of Târgu Mureş, Romania

11. **Valic Eugeniu** - THE ROLE OF 3D-PRINTING TECHNOLOGIES IN ONCOLOGY - A COMPREHENSIVE STUDY AMONG MEDICAL STUDENTS

Scientific advisor: Mereuţă Ion, MD, PhD, Professor, Department of Oncology, *Nicolae Testemitanu* State University of Medicine and Pharmacy, Chisinau, Republic of Moldova

12. **Zingan Mihaela** - ETIOPATHOGENETIC FRONTIERS OF TROPHOBLASTIC NEOPLASMS: A COMPREHENSIVE REVIEW

Scientific advisor: Sofroni Dumitru, PhD, Professor, Department of Oncology, *Nicolae Testemitanu* State University of Medicine and Pharmacy, Chisinau, Republic of Moldova; Vîrlan Mariana, MD, Assistant Professor, Department of Oncology, *Nicolae Testemitanu* State University of Medicine and Pharmacy, Chisinau, Republic of Moldova

XIII. SHAPING TOMORROW'S HEALTH: INNOVATIONS IN PUBLIC HEALTH

Chairman: Paraschiv Angela, MD, PhD, Associate Professor

Members: Balan Greta, MD, PhD, Associate Professor
Ciobanu Elena, MD, PhD, Associate Professor
Spătaru Diana, MD, PhD, Associate Professor

Secretary: Belecci Elena, Glavceva Maria

1. **Bassarab Anisia-** EXAMINING GENDER-BASED VIOLENCE RESPONSE STRATEGIES IN MOLDOVA

Scientific advisor: Cebanu Serghei, MD, PhD, Professor, Head of Department of Preventive Medicine, *Nicolae Testemitanu* State University of Medicine and Pharmacy, Chisinau, Moldova

2. **Bologan Victoria-** DUAL-ENERGY X-RAY ABSORPTIOMETRY /DEXA, THE STANDARD IN THE DIAGNOSIS OF OSTEOPOROSIS

Scientific advisor: Ciobanu Elena, MD, MPH, Associate Professor, Discipline of Hygiene, Department of Preventive Medicine, *Nicolae Testemitanu* State University of Medicine and Pharmacy, Chisinau, Republic of Moldova

3. **Cara Olga-** THE PSYCHOLOGICAL IMPACT OF NOSOCOMIAL INFECTION: a systematic review

Scientific advisor: Paraschiv Angela, MD, PhD, Associate Professor, Head of Discipline of Epidemiology, Department of Preventive Medicine, *Nicolae Testemitanu* State University of Medicine and Pharmacy, Chisinau, Republic of Moldova

4. **Cazacu-Stratu Camelia-** VIOLENCE PREVENTION IN PHARMACIES

Scientific advisor: Ciobanu Elena, MD, MPH, Associate Professor, Discipline of Hygiene, Department of Preventive Medicine, *Nicolae Testemitanu* State University of Medicine and Pharmacy, Chisinau, Republic of Moldova

5. **Ciobanu Daniela-** PLAYGROUND DANGERS: A COMPREHENSIVE INVESTIGATION INTO CHILDHOOD INJURIES AND PARENTAL PERSPECTIVES

Scientific advisor: Cazacu-Stratu Angela, MD, MPH, Associate Professor, Discipline of Hygiene, Department of Preventive Medicine, *Nicolae Testemitanu* State University of Medicine and Pharmacy, Chisinau, Republic of Moldova

6. **Ciobanu Maria-** CLINICAL CHARACTERISTIC OF ADULTS HOSPITALIZED WITH COVID-19 IN THE REPUBLIC OF MOLDOVA

Scientific advisor: Buta Galina, MD, Associate Professor, Department of Family Medicine, *Nicolae Testemitanu* State University of Medicine and Pharmacy, Chisinau, Republic of Moldova

7. **Cociu Svetlana** - ASSESSMENT OF SEXUAL AND REPRODUCTIVE HEALTH LITERACY AMONG ADOLESCENTS IN MOLDOVA

Scientific advisor: Cazacu-Stratu Angela, MD, MPH, Associate Professor, Discipline of Hygiene, Department of Preventive Medicine, *Nicolae Testemitanu* State University of Medicine and Pharmacy, Chisinau, Republic of Moldova; Camille Thomas, MD, MSc (Public Health), Specialist in reproductive health & health systems strengthening, Independent Consultant; Sara L Nam, PhD (Epidemiology), Specialist in reproductive health research & health systems strengthening, Registered Midwife & Nurse, Independent Consultant.

8. **Cristea Daniel**- INTERCULTURAL COMMUNICATION IN THE FRANCOPHONE EUROPEAN YOUTH COMMUNITY

Scientific advisor: Eșanu Anatolie, MD, Associate Professor, Department of Philosophy and Bioethics, *Nicolae Testemitanu* State University of Medicine and Pharmacy, Chisinau, Republic of Moldova

9. **Curteanu Maria** - HISTORICAL REFLECTIONS ON DRINKING WATER: HYGIENIC AND SOCIAL SIGNIFICANCE

Scientific advisor: Ciobanu Elena, MD, MPH, Associate Professor, Discipline of Hygiene, Department of Preventive Medicine, *Nicolae Testemitanu* State University of Medicine and Pharmacy, Chisinau, Republic of Moldova

10. **Dumitraș Cristina**- THE CLIMATE CHANGE PROBLEM IN THE VIEW OF MEDICAL STUDENTS

Scientific advisor: Croitoru Cătălina, MD, MPH, Associate Professor, Hygiene Discipline, Department of Preventive Medicine, *Nicolae Testemitanu* State University of Medicine and Pharmacy, Chisinau, Republic of Moldova

11. **Glavan Camelia** - CLOSTRIDIODES DIFFICILE COLITIS IN THE CONTEXT OF THE COVID-19 PANDEMIC

Scientific advisor: Placinta Gheorghe, MD, PhD, Associate Professor, Head of Department of Infectious Diseases, *Nicolae Testemitanu* State University of Medicine and Pharmacy, Chisinau, Republic of Moldova

12. **Iaconi Oana-Simina**- THE WATER – SOURCE OR VEHICLE FOR SPREADING ANTIMICROBIAL RESISTANCE?

Scientific advisor: Balan Greta, PhD, Associate Professor, Microbiology and Immunology Discipline, Department of Preventive Medicine, *Nicolae Testemitanu* State University of Medicine and Pharmacy, Chisinau, Republic of Moldova

13. **Marga Irina** - HEALTHCARE-ASSOCIATED INFECTIONS IN PEDIATRIC PATIENTS - AN UNDERESTIMATED PROBLEM OF HUMANITY.

Scientific advisor: Paraschiv Angela, MD, PhD, Associate Professor, Head of Discipline of Epidemiology, Department of Preventive Medicine, *Nicolae Testemitanu* State University of Medicine and Pharmacy, Chisinau, Republic of Moldova

14. Micșanschi Dina- NOSOCOMIAL INFECTIONS IN SURGICAL PRACTICE

Scientific advisor: Prisacari Viorel, MD, PhD, Professor, Discipline of Epidemiology, Department of Preventive Medicine, *Nicolae Testemitanu* State University of Medicine and Pharmacy, Chisinau, Moldova

15. Racu Maria-Victoria - BORON INTAKE OF THE POPULATION FROM DIFFERENT REGIONS OF THE REPUBLIC OF MOLDOVA

Scientific advisor: Pinzaru Iurie, Doctor of Science, the National Agency for Public Health

16. Rîmiș Paola- MEASURING AND EVALUATION – BASIC TOOLS IN PUBLIC HEALTH

Scientific advisor: Deleu Raisa, Associate Professor, Discipline of Hygiene, Department of Preventive Medicine, *Nicolae Testemitanu* State University of Medicine and Pharmacy, Chisinau, Republic of Moldova

17. Robu Felicia- FREQUENCY AND CHARACTERISTICS OF COMMON CUTANEOUS VESICULOBULLOUS DISORDERS IN THE REPUBLIC OF MOLDOVA

Scientific advisor: Betiu Mircea, MD, PhD, Associate Professor, Head of Department of Dermatovenerology, *Nicolae Testemitanu* State University of Medicine and Pharmacy, Chisinau, Republic of Moldova

18. Spînu Victor- EVALUATION OF THE CONSUMPTION OF FOOD PRODUCTS CONTAINING SUGAR AMONG YOUNG PEOPLE

Scientific advisor: Ciobanu Elena, MD, MPH, Associate Professor, Discipline of Hygiene, Department of Preventive Medicine, *Nicolae Testemitanu* State University of Medicine and Pharmacy, Chisinau, Republic of Moldova

19. Tabarcea Corneliu- MICROBIAL RESISTANCE TO ANTIBIOTICS

Scientific advisor: Balan Greta, PhD, Associate Professor, Microbiology and Immunology Discipline, Department of Preventive Medicine, *Nicolae Testemitanu* State University of Medicine and Pharmacy, Chisinau, Republic of Moldova

20. Vilcova Ana- PSYCHOEMOTIONAL HEALTH OF MEDICAL WORKERS DURING PANDEMIC PERIOD

Scientific advisor: Ciobanu Elena, MD, MPH, Associate Professor, Discipline of Hygiene, Department of Preventive Medicine, *Nicolae Testemitanu* State University of Medicine and Pharmacy, Chisinau, Republic of Moldova

XIV. SMILE SAVERS: INNOVATIONS IN DENTISTRY

Chairman: Solomon Oleg, MD, PhD, Associate Professor

Members: Chele Nicolae, MD, PhD, Professor

Cheptanaru Olga, MD, PhD

Ciobanu Sergiu, MD, PhD, Professor

Fala Valeriu, MD, PhD, Professor

Mostovei Andrei, MD, PhD, Associate Professor

Railean Silvia, MD, PhD, Associate Professor

Sîrbu Dumitru, MD, PhD, Associate Professor

Spinei Aurelia, MD, PhD, Associate Professor

Stepco Elena MD, PhD, Associate Professor

Trifan Valentina, MD, PhD, Associate Professor

Unçuța Diana, MD, PhD, Associate Professor

Secretary: Desan Tudorina, Desan Cristina, Ignatiev Vitalina

1. **Angheluță Mihaela** - COMPARATIVE ANALYSIS OF PALATAL WOUND MANAGEMENT TECHNIQUES POST FREE GINGIVAL GRAFTING

Scientific advisor: Sîrbu Dumitru, MD, Associate Professor, Arsenie Gutan Department of Oral-Maxillofacial Surgery and Oral Implantology, *Nicolae Testemitanu* State University of Medicine and Pharmacy, Chisinau, Republic of Moldova

2. **Baciu Aurelia**- BIOSTIMULATION THERAPY IN THE COMPLEX TREATMENT OF PERIODONTAL DISEASE

Scientific advisor: Ciobanu Sergiu, MD, PhD, Sofia Sîrbu Department of Odontology, Periodontology and Oral Pathology, *Nicolae Testemitanu* State University of Medicine and Pharmacy, Chisinau, Republic of Moldova

3. **Blanar Valeria**- EVALUATION OF GUIDED BONE REGENERATION AND BONE GRAFTING WITH AUTOGENOUS LAMINATES IN ORAL SURGERY

Scientific advisor: Zănoagă Oleg, PhD, Associate Professor, Arsenie Gutan Department of Oral-Maxillofacial Surgery and Oral Implantology, *Nicolae Testemitanu* State University of Medicine and Pharmacy, Chisinau, Republic of Moldova

4. **Bolgarova Anna**- DENTAL TRASPOSITION. DIAGNOSTIC AND TREATMENT GUIDELINES

Scientific advisor: Trifan Valentina, MD, Associate Professor, Department of Orthodontics, *Nicolae Testemitanu* State University of Medicine and Pharmacy, Chisinau, Republic of Moldova

5. **Botnari Dana**- DENTIGEROUS CYSTS: DIAGNOSIS AND TREATMENT STRATEGIES

Scientific advisor: Motelica Gabriela MD, PhD, Assistant Professor, Arsenie Gutan Department of Oral-Maxillofacial Surgery and Oral Implantology, *Nicolae Testemitanu* State University of Medicine and Pharmacy, Chisinau, Republic of Moldova; Chele Nicolae, PhD, Professor, Head of Arsenie Gutan Department of Oral-Maxillofacial Surgery and Oral Implantology, *Nicolae Testemitanu* State University of Medicine and Pharmacy, Chisinau, Republic of Moldova

6. **Butnaru Evelina** - USES OF MINERAL TRIOXIDE AGGREGATE IN ENDODONTIC TREATMENT

Scientific advisor: Bodrug Valentina, MD, PhD, Associate Professor, Sofia Sîrbu Department of Odontology, Periodontology and Oral Pathology, *Nicolae Testemitanu* State University of Medicine and Pharmacy, Chisinau, Republic of Moldova

7. **Caraman Ana-Lucia** - EFFICIENCY OF THE CARRIER-MOTION APPLIANCE IN THE TREATMENT OF CLASS II MALOCCLUSION

Scientific advisor: Cazacu Igor, Assistant professor, Department of Orthodontics, *Nicolae Testemitanu* State University of Medicine and Pharmacy, Chisinau, Republic of Moldova

8. **Cernopischi Artiom**- ACUTE DIFFUSE PULPITIS. ETIOLOGY AND TREATMENT METHODS

Scientific advisor: Chetrus Viorica, MD, Associate Professor, Sofia Sîrbu Department of Odontology, Periodontology and Oral Pathology, *Nicolae Testemitanu* State University of Medicine and Pharmacy, Chisinau, Republic of Moldova

9. **Chihai Alexandrina**- THE USE OF BIPHASIC CEMENTS IN PERI-IMPLANT CONTOUR GRAFTING

Scientific advisor: Mostovei Andrei, PhD, Associate Professor, Arsenie Gutan Department of Oral-Maxillofacial Surgery and Oral Implantology, *Nicolae Testemitanu* State University of Medicine and Pharmacy, Chisinau, Republic of Moldova

10. **Cojuhari Elizaveta**- TREATMENT OF BURNS AND THEIR CONSEQUENCES IN THE FACE AND NECK AREA

Scientific advisor: Rusu-Radzichevici Natalia, PhD, Associate Professor, Arsenie Gutan Department of Oral-Maxillofacial Surgery and Oral Implantology, *Nicolae Testemitanu* State University of Medicine and Pharmacy, Chisinau, Republic of Moldova

11. **Colioglo Liudmila** - OSTEOMYELITIS OF THE LOWER JAW

Scientific advisor: Rusu-Radzichevici Natalia, PhD, Associate Professor, Arsenie Gutan Department of Oral-Maxillofacial Surgery and Oral Implantology, *Nicolae Testemitanu* State University of Medicine and Pharmacy, Chisinau, Republic of Moldova

12. **Eni Ion**- TOPOGRAPHICAL CHANGES OF THE MANDIBULAR CANAL, CAUSED BY THE RADICULAR CYST. CLINICAL CASE

Scientific advisor: Sârbu Dumitru, MD, Associate Professor, Arsenie Gutan Department of Oral-Maxillofacial Surgery and Oral Implantology, *Nicolae Testemitanu* State University of Medicine and Pharmacy, Chisinau, Republic of Moldova

13. Furtuna Maria- GUIDED BONE REGENERATION USING LAMELLAR AUTOGENOUS BONE BLOCK

Scientific advisor: Mostovei Andrei, PhD, Associate Professor, Arsenie Gutan Department of Oral-Maxillofacial Surgery and Oral Implantology, *Nicolae Testemitanu* State University of Medicine and Pharmacy, Chisinau, Republic of Moldova

14. Gaidau Dan - THE ROLE OF COLLAGEN GRAFTING IN SOCKET PRESERVATION

Scientific advisor: Mostovei Andrei, PhD, Associate Professor, Arsenie Gutan Department of Oral-Maxillofacial Surgery and Oral Implantology, *Nicolae Testemitanu* State University of Medicine and Pharmacy, Chisinau, Republic of Moldova

15. Gonța Maria- ABSOLUTE ANCHORAGE BY ORTHODONTIC IMPLANTS IN THE TREATMENT OF DIFFERENT DENTAL MALPOSITIONS. CASE REPORT

Scientific advisor: Sîrbu Dumitru, MD, Associate Professor, Arsenie Gutan Department of Oral-Maxillofacial Surgery and Oral Implantology, *Nicolae Testemitanu* State University of Medicine and Pharmacy, Chisinau, Republic of Moldova

16. Ignatiev Vitalina - RELATIONSHIP BETWEEN VISUAL IMPAIRMENT AND EYELID PTOSIS

Scientific advisor: Rusu-Radzichevici Natalia, PhD, Associate Professor, Arsenie Gutan Department of Oral-Maxillofacial Surgery and Oral Implantology, *Nicolae Testemitanu* State University of Medicine and Pharmacy, Chisinau, Republic of Moldova

17. Mocan Marinela- MORPHO-FUNCTIONAL RESTORATION OF THE LATERAL GROUP OF TEETH

Scientific advisor: Chetrus Viorica, MD, Associate Professor, Sofia Sîrbu Department of Dentistry, Periodontology and Oral Pathology, *Nicolae Testemitanu* State University of Medicine and Pharmacy, Chisinau, Republic of Moldova

18. Motpan Natalia - STATISTICAL DATA AND IMAGING METHODS USED IN THE DIAGNOSIS OF OSTEOMYELITIS OF THE UPPER JAW

Scientific advisor: Rusu-Radzichevici Natalia, PhD, Associate Professor, Arsenie Gutan Department of Oral-Maxillofacial Surgery and Oral Implantology, *Nicolae Testemitanu* State University of Medicine and Pharmacy, Chisinau, Republic of Moldova

19. Nicolaev Ana- INFLAMMATORY PROCESSES IN THE ORO-MAXILLOFACIAL REGION. STUDY OF ANTIBIOTICOGRAMS AND STATISTIC DATA.

Scientific advisor: Rusu-Radzichevici Natalia, PhD, Associate Professor, Arsenie Gutan Department of Oral-Maxillofacial Surgery and Oral Implantology, *Nicolae Testemitanu* State University of Medicine and Pharmacy, Chisinau, Republic of Moldova

20. Onica Patricia- ANESTHESIA IN THE ORO-MAXILLO-FACIAL REGION IN PATIENTS WITH HYPERTENSION

Scientific advisor: Radzichevici Mihail, MD, Associate Professor, Arsenie Gutan Department of Oral-Maxillofacial Surgery and Oral Implantology, *Nicolae Testemitanu* State University of Medicine and Pharmacy, Chisinau, Republic of Moldova; Rusu-Radzichevici Natalia, PhD, Associate Professor, Arsenie Gutan Department of Oral-Maxillofacial Surgery and Oral Implantology, *Nicolae Testemitanu* State University of Medicine and Pharmacy, Chisinau, Republic of Moldova

21. Rîbacova Daria- DECOMPRESSION - METHOD OF TREATMENT OF GIGANT CYSTS OF THE UPPER JAW. CLINICAL CASE

Scientific advisor: Sârbu Dumitru, MD, Associate Professor, Arsenie Gutan Department of Oral-Maxillofacial Surgery and Oral Implantology, *Nicolae Testemitanu* State University of Medicine and Pharmacy, Chisinau, Republic of Moldova

22. Talmaci Ana-Maria- PREDISPOSING FACTORS IN THE DEVELOPMENT OF TRANSVERSE MALOCCLUSIONS

Scientific advisor: Trifan Valentina, MD, Associate Professor, Department of Orthodontics, *Nicolae Testemitanu* State University of Medicine and Pharmacy, Chisinau, Republic of Moldova

23. Tonofa Irina- COMPREHENSIVE ANALYSIS IN THE DETECTION OF CARIES SUSCEPTIBILITY IN CHILDREN WITH DENTAL FLUOROSIS

Scientific advisor: Stepco Elena, PhD, Associate Professor, „Ion Lupan" Department of Pediatric Oral-Maxillofacial Surgery and Pedodontics, *Nicolae Testemitanu* State University of Medicine and Pharmacy, Chisinau, Republic of Moldova

24. Uzun Igor - THE EFFECT OF ANTI-INFLAMMATORY MEDICATION ON ORTHODONTIC TOOTH MOVEMENT

Scientific advisor: Ciumeico Lucia, Associate Professor, Department of Orthodontics, *Nicolae Testemitanu* State University of Medicine and Pharmacy, Chisinau, Republic of Moldova.

25. Zehua Cai - MINIMALLY INVASIVE MANAGEMENT OF DENTAL FLUOROSIS IN ADOLESCENTS: CASE REPORT

Scientific advisor: Stepco Elena, PhD, Associate Professor, „Ion Lupan" Department of Pediatric Oral-Maxillofacial Surgery and Pedodontics, *Nicolae Testemitanu* State University of Medicine and Pharmacy, Chisinau, Republic of Moldova

**XV. UNLOCKING THE BODY'S SECRETS: INNOVATIONS IN INTERNAL
MEDICINE**

Chairman: Matcovschi Sergiu, MD, PhD, Professor

Members: Minodora Mazur, MD, PhD, Professor

Talmaci Cornelia, MD, PhD, Associate Professor

Țurcan Svetlana, MD, PhD, Professor

Vudu Lorina, MD, PhD, Professor

Secretary: Pavlovschi Cristina

**1. Abd El Rahim Abu Hussen - EPIDEMIOLOGY AND CLINIC-PARACLINIC
FEATURES OF OSTEOPOROSIS IN MEN**

Scientific advisor: Nistor Alesea, MD, Assistant Professor, Discipline of Rheumatology and Nephrology, Department of Internal Medicine, *Nicolae Testemitanu* State University of Medicine and Pharmacy, Chisinau, Republic of Moldova

**2. Ancy Manoharan Ajitha - PREVALENCE OF ANXIOUS DEPRESSIVE SYNDROME
IN HOSPITALISED IN INFLAMMATORY ARTHRITIS**

Scientific advisor: Cazac Victor Ion

**3. Cebanu Ecaterina - APPLICABILITY OF THE CLDQ IN THE MONITORING OF
PATIENTS WITH DELTA VIRAL LIVER CIRRHOSIS**

Scientific advisor: Turcanu Adela, PhD, Associate Professor, Gastroenterology Discipline, Department of Internal Medicine, *Nicolae Testemitanu* State University of Medicine and Pharmacy, Chisinau, Republic of Moldova

**4. Ciorici Daniela - THE CONNECTION BETWEEN THE TREATMENT OF
HYPOTHYROIDISM WITH LEVOTHYROXINE AND ITS EFFECTS ON THE
CARDIOVASCULAR SYSTEM**

Scientific advisor: Caradja Gheorghe, Associate Professor, Department of Endocrinology, *Nicolae Testemitanu* State University of Medicine and Pharmacy, Chisinau, Republic of Moldova

**5. Cumpata Veronica - CLINICAL "ODYSSEY" IN WILSON'S DISEASE PATIENTS
FROM THE REPUBLIC OF MOLDOVA**

Scientific advisor: Turcanu Adela, PhD, Associate Professor, Gastroenterology Discipline, Department of Internal Medicine, *Nicolae Testemitanu* State University of Medicine and Pharmacy, Chisinau, Republic of Moldova

**6. Essaimathi Saravanane - INCIDENCE, RISK FACTORS, AND COMPLICATIONS OF
CARDIOVASCULAR SYSTEM IN PATIENT WITH GRAVES DISEASE**

Scientific advisor: Rizov Cristina, MD, PhD, Associate Professor, Department of Endocrinology, *Nicolae Testemitanu* State University of Medicine and Pharmacy, Chisinau, Republic of Moldova

7. Melnic Nicolae - THE CLINICAL VALUE OF ENTHESITIS IN THE EARLY DIAGNOSIS OF PSORIATIC ARTHRITIS

Scientific advisor: Russu Eugeniu, MD, Associate Professor, Discipline of Rheumatology and Nephrology, Department of Internal Medicine, *Nicolae Testemitanu* State University of Medicine and Pharmacy, Chisinau, Republic of Moldova

8. Pîrvu Victor - EXTERNAL VALIDATION OF A NEW PROGNOSTIC SCORE FOR MORTALITY IN THE FIRST 3 MONTHS OF PATIENTS ON THE WAITING LIST FOR LIVER TRANSPLANTATION

Scientific advisors: Peltec Angela, PhD, Associate Professor, Gastroenterology Discipline, Department of Internal Medicine, *Nicolae Testemitanu* State University of Medicine and Pharmacy, Chisinau, Republic of Moldova; Hotineanu Adrian, PhD, Professor, Surgery Department No. 2, *Nicolae Testemitanu* State University of Medicine and Pharmacy, Chisinau, Republic of Moldova

9. Praștină Alexandra - COMORBIDITIES IN GOUT

Scientific advisor: Rotaru Larisa, MD, Associate Professor, Discipline of Rheumatology and Nephrology, Department of Internal Medicine, *Nicolae Testemitanu* State University of Medicine and Pharmacy, Chisinau, Republic of Moldova.

10. Shehab Faraj - HYPERFERRITINEMIA IN LIVER DISEASES - DIAGNOSIS AND CONTROVERSIES

Scientific advisor: Berliba Elina, MD, Associate Professor, Discipline of Gastroenterology, Department of Internal Medicine, *Nicolae Testemitanu* State University of Medicine and Pharmacy, Chisinau, Republic of Moldova

11. Sîrbu Felicia - RECURRENT HYPOGLYCAEMIA IN PATIENTS WITH DIABETES AND LIVER CIRRHOSIS – A REAL THERAPEUTIC CHALLENGE

Scientific advisor: Bivol Elena, MD, Assistant Professor, Department of Endocrinology, *Nicolae Testemitanu* State University of Medicine and Pharmacy, Chisinau, Republic of Moldova

12. Sofonov Nicoleta - OBESITY: PARTICULAR COMPLICATIONS IN PREGNANT WOMEN

Scientific advisor: Caradja Gheorghe, Associate Professor, Department of Endocrinology, *Nicolae Testemitanu* State University of Medicine and Pharmacy, Chisinau, Republic of Moldova

13. Surguci Doina - AUTOIMMUNE POLYGLANDULAR SYNDROME TYPE 2: A CASE REPORT

Scientific advisor: Vudu Stela, Assistant Professor, Department of Endocrinology, *Nicolae Testemitanu* State University of Medicine and Pharmacy, Chisinau, Republic of Moldova

14. Tishya Mukherjee - A CASE OF SUSPECTED LIPODYSTROPHY IN AN INSULIN-RESISTANT PATIENT

Scientific advisor: Şeremet Aristia, Assistant Professor, MD, Department of Endocrinology, *Nicolae Testemitanu* State University of Medicine and Pharmacy, Chisinau, Republic of Moldova

15. Toncoglaz Alexandra - ROLE OF MINERALOCORTICOID RECEPTOR PATHWAY IN THE PATHOGENESIS OF DIABETIC RETINOPATHY

Scientific advisor: Vudu Stela, Assistant Professor, Department of Endocrinology, *Nicolae Testemitanu* State University of Medicine and Pharmacy, Chisinau, Republic of Moldova; Lilia Tacu, MD, PhD, University Assistant, Department of Pathophysiology and Clinical Pathophysiology, *Nicolae Testemitanu* University

16. Utocichina Ana - EXPRESSION OF THE INFLAMMATORY SYNDROME MANIFESTATIONS IN PATIENTS WITH SERONEGATIVE RHEUMATOID ARTHRITIS

Scientific advisor: Nistor Alesea, MD, Assistant Professor, Discipline of Rheumatology and Nephrology, Department of Internal Medicine, *Nicolae Testemitanu* State University of Medicine and Pharmacy, Chisinau, Republic of Moldova

17. Vansh Sethi - CLINICAL AND SEROLOGICAL EXPRESSIONS OF SLE AMONG PATIENTS FROM REPUBLIC OF MOLDOVA AND INDIA

Scientific advisor: Russu Eugeniu, MD, Associate Professor, Discipline of Rheumatology and Nephrology, Department of Internal Medicine, *Nicolae Testemitanu* State University of Medicine and Pharmacy, Chisinau, Republic of Moldova

PARALLEL EVENTS

Partners

