



Alexandru Ioan Cuza University of IAȘI
Faculty of Geography and Geology



XIX-th edition

International Conference

Present Environment and Sustainable Development

7-9 June, Iași

Envirogis Association

Alexandru Ioan Cuza University of IAȘI

Faculty of Geography and Geology

Department of Geography



Organizers



Envirogis Association



University "Alexandru Ioan Cuza" Iași



Faculty of Geography and Geology
Department of Geography
Environmental Geography Group

Partners



National Environmental Guard - Iași Branch



State University of Moldova, Republic of Moldova



The Institute of Ecology and Geography of the Academy of
Sciences of the Republic of Moldova



Environment Protection Agency, Iași



National Association of Aquaculture „ROMFISH”



Romsilva - Regia Națională a Pădurilor



ANANP - Agenția Națională pentru Arii Naturale
Protejate



Organizing Committee

Coordinator:

Assoc. prof. **Adrian URSU** Ph.D., Dean Faculty of Geography and Geology, UAIC

Members:

Assoc. prof. ing. habil. **Lilian NIACȘU** PhD, Vice-Rector for Teaching and Research Centres, University Branches and Secondary Education, UAIC

Prof. univ. **Adrian GROZAVU** PhD, Faculty of Geography and Geology, UAIC

Prof. univ. **Doru Toader JURAVLE** PhD, Faculty of Geography and Geology, UAIC

Assoc. prof. **Gheorghe JIGĂU** PhD, State University of Republic of Moldova

Assoc. prof. **Petru BACAL** PhD, Institute of Ecology and Geography, Ministry of Education and Research, Chișinău, Republic of Moldova

Assoc. prof. **Cristian Constantin STOLERIU** PhD, Faculty of Geography and Geology, UAIC

Assoc. prof. ing. habil. **Iuliana-Gabriela BREABĂN** PhD, Faculty of Geography and Geology, UAIC

Assoc. prof. **Lucian SFÎCĂ** PhD, Faculty of Geography and Geology, UAIC

Prof. univ. **Corneliu IAȚU** PhD, Faculty of Geography and Geology, UAIC

Lect. **Alexandru BĂNICĂ** PhD, Faculty of Geography and Geology, UAIC

Lect. **Pavel ICHIM** PhD, Faculty of Geography and Geology, UAIC

Chief Cms. ing. **Gheorghe BACUȘCĂ**, GNM Chief Cms. Iași

County Eng. **Galea TEMNEANU**, executiv director APM Iași

Eng. **Gabriel DONCEAN**, director ROMSILVA Iasi

Eng. **Răzvan DEJU** PhD, chief of Iași Territorial Service ANANP

Cms. **Ștefan KOCSIS**, National Environmental Guard, Iași County branch

Prof. **Viorel PARASCHIV** PhD, Tehnological-economic of tourism high School, Iași

Eng. **Cătălin PLATON**, director ROMFISH

Asist. **Marina IOSUB** PhD, Faculty of Geography and Geology, UAIC

Asist. **Vasile JITARIU** PhD, Faculty of Geography and Geology, UAIC

Asist. **Oana-Elena CHELARIU** PhD, Faculty of Geography and Geology, UAIC

Asist. **Andrei ENEA** PhD, Faculty of Geography and Geology, UAIC

Res. **Diana-Elena BOBRIC** PhD, ICI-CERNESIM, UAIC

PhD. student **Ana-Maria ANASTASIEI**, Faculty of Geography and Geology, UAIC

Financial staff:

ec. **Cristian PRICOP**, chief administrator of the Faculty of Geography and Geology, UAIC



Scientific program committee

Prof. univ. **M. Brahim AKDIM** PhD, Sidi Mohamed Ben Abdellah University, Fès, Morocco

Prof. univ. **Karl BENEDIKTSSON** PhD, University of Iceland, Reykjavík, Iceland

Prof. univ. **Asher BRENNER** PhD, Ben Gurion University of Negev, Beer-Sheva, Israel

Prof. univ. **Javier CALZADA** PhD, Univ. de Huelva, Spain

Prof. univ. **Adina-Eliza CROITORU** PhD, Babeș-Bolyai University, Cluj-Napoca, Romania

Prof. univ. **Gheorghe DAMIAN** PhD, Techn. Univ. Cluj-Napoca, North Univ. Center Baia Mare, Romania

Academician Prof. univ. **Gheorghe DUCA** PhD, Academy of Sciences of R. Moldavia

Prof. univ. **Pierre DUMOLARD** PhD, Joseph Fourier University, Grenoble, France

Prof. univ. **Adrian GROZAVU** PhD, UAIC

Prof. univ. **Corneliu IAȚU** PhD, UAIC

Prof. univ. **Nicoleta IONAC** PhD, Univ. of Bucharest, Romania

Prof. univ. **Doru Toader JURAVLE** PhD, Faculty of Geography and Geology, UAIC

Prof. univ. **Haino Uwe KASPER** PhD, Inst. of Geology & Mineral, Köln University, Germany

Assoc. prof. **Alberto MARINI** PhD, Univ of Cagliari, Italy

Assoc. prof. **Alexandru Ionuț PETRIȘOR**, Ion Mincu Univ. of Architecture and Urbanism, București, Romania

Prof. univ. **Constantin RUSU** PhD, UAIC

Prof. univ. **Eugen RUSU** PhD, UAIC

Prof. univ. **Ion SANDU** PhD, UAIC

Prof. univ. **Michael SOFER** PhD, Bar-Ilan Univ, Ramat Gan, Israel

Senior Res. dr. **Róbert Eugen SZÉP** PhD, Nat. Inst. Res. & Develop. Env. Prot., Bucharest, Romania

Conf. **Robert WATREL** PhD, South Dakota State Univ., USA

Prof. univ. **George W. WHITE** PhD, South Dakota State Univ., USA

Assoc. prof. **Lucian SFÎCĂ** PhD, Faculty of Geography and Geology, UAIC

Prof. univ. **Cristian IOJĂ** PhD, University of Bucharest, Romania

Prof. univ. **Mihail LUCA** PhD, "Gheorghe Asachi" Technical University of Iasi, Romania

Assoc. prof. **Petru BACAL** PhD, Institute of Ecology and Geography, Ministry of Education and Research, Chișinău, Republic of Moldova



Programme

Friday – 7 June 2024

8:00 – 9:20 - Participants registration

Alexandru Ioan Cuza University of Iași, B wing, 3rd floor at Faculty of Geography and Geology, Geography Department

9:30 – 10:25 – Official opening:

Assoc. prof. ing. habil. PhD. **Lilian NIACȘU** Vice-Rector for Teaching and Research Centres, University Branches and Secondary Education, UAIC

Gheorghe BACUȘCĂ chief commissioner Environmental Guard

Assoc. prof. **Gheorghe JIGĂU** PhD, State University of Republic of Moldova

Assoc. prof. **Petru BACAL** PhD, Institute of Ecology and Geography, Ministry of Education and Research, Chișinău, Republic of Moldova

10:30 – 11:50 – Plenary presentations

12:00 – 13:00 – Lunch break

13:00 – 15:30 – Thematic Presentations

15:30 – 16:00 – Coffe break

16:00 – 18:00 – Thematic Presentations

18:30 – 21:30 – Dinner

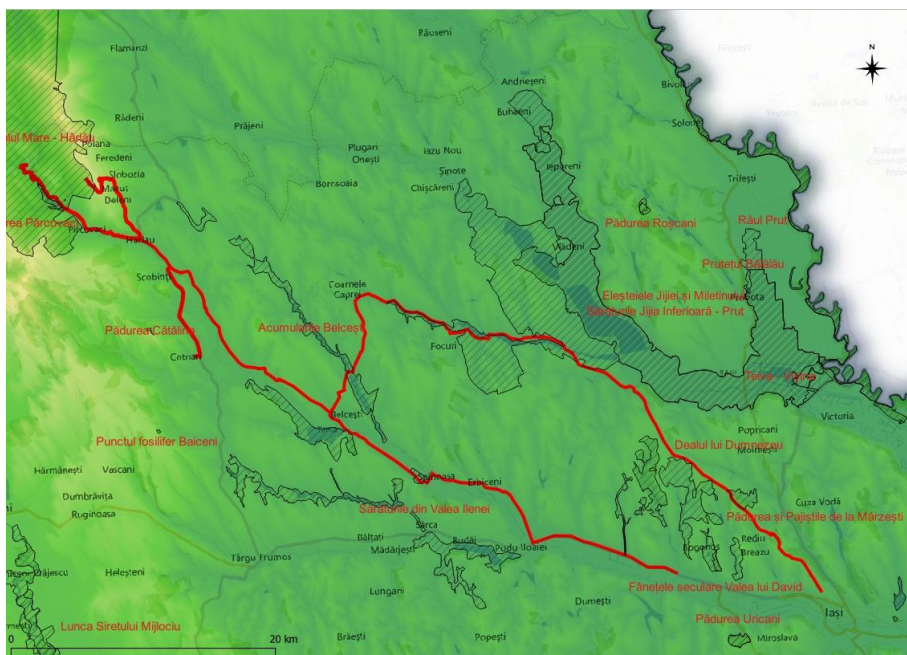


Saturday – 8 June 2024

Field application regarding the Management of Protected Areas

Departure 8:15 Corp B UAIC

IAȘI – Mârzești forest and meadows with participation in the workshop "Sustainable partnership between civil society, relevant authorities, and local communities in the Natura 2000 site ROSC10171 Mârzești forest and meadows" organized by Rediu's TATAR Association together with ANANP and Iasi Forestry Department - Wine Museum of Hârlău - Deleni stone quarry and Lakes Monastery - Humosu Secular Forest: presentation of the Iasi Forestry Directorate - lunch - Cotnari Schola Latina - IAȘI



Field trip itinerary



Plenary Session

Ora: 10:30

Sala B8

Chairman: Assoc. prof. Alexandru-Ionuț PETRIȘOR

Authors	Affiliation	Title
1. Ionel MUNTELE ^{1,2} Alexandru BĂNICĂ ¹ Marinela ISTRATE ¹	¹ Alexandru Ioan Cuza University of Iasi, Faculty of Geography and Geology, Iasi Romania ² Romanian Academy, Iasi Branch, Center of Geographical Researches	Expansion of urban agglomerations (1980-2020). Global perspectives in a factorial context.
2. Cristian IOJĂ	University of Bucharest, Romania	Challenges of bringing nature into cities
3. Oana-Cătălina POPESCU ^{1,2} , Antonio-Valentin TACHE ^{1,2} , Alexandru-Ionuț PETRIȘOR ^{1,2,3,4}	¹ National Institute for Research and Development in Urban Planning, Construction and Sustainable Territorial Development URBAN-INCERC ² National Institute for Research and Development in Tourism, Bucharest, Romania ³ "Ion Mincu" University of Architecture and Urbanism, Bucharest, Romania ⁴ Department of Architecture, Faculty of Urbanism and Architecture, Technical University of Moldova, Chisinau, Moldova	Connecting nature and technology: using artificial intelligence to plan greener cities
4. Gheorghe JIGĂU ¹ , Sergiu DOBROJAN ¹ , Iurie MOȚOI ¹ , Galina DOBROJAN ¹ , Boris TURCHIN ¹ , Nina PLĂCINTĂ ¹ , Angela STAGNIC ¹ , Cristian JIGĂU ²	¹ Moldova State University ² AO Institute of Agricultural and Environmental Policies	The physical state of the arable chernosiums from the East- European Plain in the context of the current trend of climate conditions
5. Răzvan DEJU ¹ , Ioana ZAIȚ ^{1,2} , Gabriel DONCEAN ³	¹ ANANP, Iași Territorial Service, Iași, Romania ² Doctoral School of Geosciences, Alexandru Ioan Cuza University of Iași, Iași, Romania ³ Directția Silvică Iași, ROMSILVA	Interpretarea naturii - instrument pentru îmbunătățirea gradului de conservare a ariilor naturale protejate din județul Iași



Session 1

Atmospheric Environment and Climate Change

Time: 13:00 – 18:00

Class: 627

Chairman: Assoc. Prof. PhD. Ovidiu Murărescu; Lect. PhD. Pavel ICHIM

1. Valeriu CAZAC ¹ , Igor CODREANU ²	¹ Institute of Electronic Engineering and Nanotechnologies "D. Ghițu" from Chișinău ² "Ion Creangă" State Pedagogical University from Chișinău	The manifestation of drying and drought phenomena at the beginning of the 21st century and impact in the Republic of Moldova
2. Laura-Elena PETRESCU ^{1,2} , Nicoleta IONAC ² , Florinela GEORGESCU ¹	¹ University of Bucharest, Bucharest, Romania ² National Meteorological Administration of Romania, Bucharest, Romania	Latest changes in heat indices of extremes in Romania - <i>online</i>
3. Aliona BOTNARI, Olga CRIVOVA	State University of Moldova, Chișinău, Republic of Moldova	Another approach to spatial modeling and temporal analysis of late spring frosts for Republic of Moldova territory
4. Zeineddine NOUACEUR ¹ , Ovidiu MURARESCU ²	¹ UMR IDES CNRS 6226, Rouen University, France ² Universitatea Valahia. Departamentul de Geografie Targoviste, Romania	Rainfall variability in North Africa (Morocco, Algeria, Tunisia): statistical analysis over just over half a century of observation (1970 - 2023)
5. Vlad AMIHĂEȘEI ^{1,2} , Lucian SFÎCĂ ³ , Shira-Raveh RUBIN ⁴ , Sorin CHEVAL ² , Alexandru DUMITRESCU ²	¹ Doctoral School of Geosciences, Alexandru Ioan Cuza University of Iași, Iași, Romania ² MeteoRomania (National Meteorological Administration), Bucharest, Romania ³ Department of Geography, Faculty of Geography and Geology, Alexandru Ioan Cuza University of Iasi, Iasi, Romania ⁴ Department of Earth and Planetary Sciences, Weizmann Institute of Science, Rehovot, Israel	Contribution of Mediterranean Cyclones to the snowfall accumulation over Romania
6. Viorica ȚURCANU, Ilie BOIAN, Rodica COJOCARI, Galina MÎNDRU	IEG, Moldova State University, Chisinau, Republic of Moldova	Thermal anomalies in the warm period of the year - indicator of climate change in the southern part of the Republic of Moldova
7. Vasilică ISTRATE ^{1,2} , Radu-Vlad DOBRI ¹ , Dragoș-Andrei SÎRBU ¹ , Ionuț-Lucian LAZĂR ¹ , Eduard POPESCU ¹ ,	¹ Intervenții Active în Atmosferă S.A., Bucharest, Romania ² Alexandru Ioan Cuza University of Iasi, Faculty of Geography and Geology, Department of Geography	Convective storms and associated extreme weather events from April month in Romania (2008-2024) - <i>online</i>



Emil SÎRBU¹,
Doru-Dorian POPESCU¹

8.	Robert ȚURCANU, Pavel ICHIM, Ioana STOIAN, Valentin RĂDUC, Iulian ADAM, Lucian SFÎCĂ, Iustina TĂRNĂUCEANU, Claudiu-Ștefănel CREȚU	Department of Geography, Faculty of Geography and Geology, Alexandru Ioan Cuza University of Iasi, Iasi, Romania	Optimizing biometeorological comfort in urban pedestrian zones: Mitigation scenarios to reduce biometeorological discomfort
9.	Pavel ICHIM, Robert ȚURCANU, Ioana STOIAN, Valentin RĂDUC, Lucian SFÎCĂ, Claudiu-Ștefănel CREȚU	Department of Geography, Faculty of Geography and Geology, Alexandru Ioan Cuza University of Iasi, Iasi, Romania	Urban microclimate simulations data to mitigate urban thermal hot-spots: Tree and cool surfaces design scenarios
10.	Lucian SFÎCĂ ¹ , Emanuel-Ștefan BALTAG ² , Claudiu-Ștefănel CREȚU ³ , Ciprian MÎNZU ² , Pavel ICHIM ¹ , Robert HRIȚAC ³	¹ Department of Geography, Faculty of Geography and Geology, Alexandru Ioan Cuza University of Iasi, Iasi, Romania ² Alexandru Ioan Cuza University of Iasi ³ Doctoral School of Geosciences, Alexandru Ioan Cuza University	Local climate characteristics of Agigea sand dune environment



Session 2

Water quality and management Risks assessment

Hour: 13:00 – 18:00

Class: 629

Chairman: Prof. dr. ing. Mihail LUCA; Assoc. prof. Ionuț MINEA; Asist. Dr. Andrei ENEA

1. Ana JELEAPOV	Institute of Ecology and Geography, Moldova State University, Chișinău, Republic of Moldova	Water resources of small and medium rivers of the Southern Development Region of the Republic of Moldova
2. Miruna-Cosmina ZAHARIA	Alexandru Ioan Cuza University of Iasi, Faculty of Geography and Geology, Iasi, Romania	Extinderea plajelor prin înnisiparea artificială - o modalitate de combatere a eroziunii costiere. Studiu de caz litoralul românesc al Mării Negre
3. Miruna-Amalia NICA, Mihnea-Ștefan COSTACHE, Valentina-Mariana MĂNOIU	Faculty of Geography, University of Bucharest, Romania	A Review of Water Pollution in the Israel-Palestinian conflict region - <i>online</i>
4. Elena ZUBCOV ¹ , Natalia ZUBCOV ² , Lucia BILEȚCHI ¹ , Nina BAGRIN ¹ , Antoaneta ENE ² , Victor CIORNEA ¹ , Petru CIORBA ¹ , Olga JURMINSKAIA ¹	¹ Moldova State University, Institute of Zoology, Chisinau, Republic of Moldova ² Dunarea de Jos University of Galati	Dynamics and migration of microelements-metals in the water-solid suspensions system of the Prut River
5. Olga JURMINSKAIA, Elena ZUBCOV, Anastasia IVANOVA, Nina BAGRIN	Moldova State University, Institute of Zoology, Chisinau, Republic of Moldova	State of the Dubossary Reservoir oxygen regime under conditions of river flow regulation and climate change
6. Ruxandra IONCE	Alexandru Ioan Cuza University of Iasi, Faculty of Geography and Geology, Iasi Romani	Assessing the quality of life in mountain social-ecological systems: a case study for the connection between wellbeing and water resource quality in the Călimani MOUNTAINS, Romania
7. Mihail LUCA, Petru-Daniel BRĂNIANU, Petronel-Ionuț ROMANESCU	Gheorghe Asachi Technical University of Iasi, Iasi, Romania	Research on the degradation of shore defence works by hydrodynamic erosion



8. Petronel-Ionuț ROMANESCU, Mihail LUCA, Petru-Daniel BRĂNIANU	Gheorghe Asachi Technical University of Iasi, Iasi, Romania	Studies and research on the characteristics of the minor bed in semi-regulated rivers
9. Ionuț MINEA ¹ , Daniel BOICU ^{1,2} , Marina IOSUB ¹ , Oana-Elena CHELARIU ¹	¹ Department of Geography, Faculty of Geography and Geology, Alexandru Ioan Cuza University of Iasi, Iasi, Romania ² Stațiunea de cercetare Mădârjac - RECENT AIR	Analyzing hydrogeological droughts: a look at the natural risks impacting Eastern Romania over the past decades
10. Andrei ENEA, Cristian-Constantin STOLERIU, Marina IOSUB, Lilian NIȚȘU	Department of Geography, Faculty of Geography and Geology, Alexandru Ioan Cuza University of Iasi, Iasi, Romania	Innovative terrain-based flood vulnerability modeling in ArcGIS
11. Oana-Elena CHELARIU, Ionuț MINEA, Adrian URSU	Department of Geography, Faculty of Geography and Geology, Alexandru Ioan Cuza University of Iasi, Iasi, Romania	Spatial distribution of natural hazards and their proximity to cultural heritage in north-eastern Romania
12. Alexandru BĂNICĂ	Department of Geography, Faculty of Geography and Geology, Alexandru Ioan Cuza University of Iasi, Iasi, Romania	Riscurile și dezastrela ca "binecuvântări deghizate"
13. Daniel BOICU ^{1,2} , Ionuț MINEA ²	¹ Stațiunea de cercetare Mădârjac - RECENT AIR ² Department of Geography, Faculty of Geography and Geology, Alexandru Ioan Cuza University of Iasi, Iasi, Romania	Estimarea poziției pânzei freatice cu MODFLOW
14. Lenuța DÎRVARIU ¹ , Dana-Andreea ȘERBAN ¹ , Marian BURDUCEA ¹ , Eugen OPREA ¹ , Gabriela DUMITRU ² , Elena TODIRAȘCU-CIORNEA ² , Cristian-Alin BARBACARIU ¹	¹ Research and Development Station for Aquaculture and Aquatic Ecology, Alexandru Ioan Cuza University of Iasi, Romania ² University of Iasi, Faculty of Biology, Alexandru Ioan Cuza University of Iasi, Iasi, Romania	The impact of including green peas in the diet of common carp cultivated in Recirculating Aquaculture System
15. Nadia KHAZRI ^{1,2} , Cristian-Constantin STOLERIU ³ , Alin MIHU-PINTILIE ⁴ , Essam HEGGY ^{5,6} , Oula AMROUNI ²	¹ Faculty of Science, University of Tunis El-Manar, Tunisia, Tunisia ² National Institute of Marine Sciences and Technologies, University of Carthage, Tunis, Tunisia ³ Faculty of Geography and Geology, Department of Geography, University "Alexandru Ioan Cuza" of Iași, Romania ⁴ Institute of Interdisciplinary Research, Department of Exact and Natural Sciences, University "Alexandru Ioan Cuza" of Iași, Romania ⁵ University of Southern California, Department of Electrical and Computer Engineering, USA	Managing sediment dynamics in Ghar El Melh: using a nature-based solution to protect the coast from erosion



Alexandru Ioan Cuza University of IAȘI

Faculty of Geography and Geology



©NASA Jet Propulsion Laboratory,
California Institute of Technology,
Pasadena, USA

16. Marina IOSUB,
Andrei ENEA,
Cristian-Constantin
STOLERIU,
Vasile JITARIU

Department of Geography, Faculty of
Geography and Geology, Alexandru Ioan
Cuza University of Iasi, Iasi, Romania

**Natural dam lakes in Romania:
formation mechanisms and
population risks**



Session 3

Environmental Geography Urban Planning Soil quality

Hour: 13:00 – 18:00

Class: 664

Chairman: Prof. Dr. Cristian IOJĂ; Petru BACAL; Asist. Dr. Oana-Elena CHELARIU

1.	Alexandru BĂNICĂ	Alexandru Ioan Cuza University of Iasi, Faculty of Geography and Geology, Iasi Romani	Irina Ungureanu, deschizător de drumuri în geografia românească
2.	Cristian IOJĂ	University of Bucharest, Romania	Cadru de analiza a caracteristicilor inițiativelor de citizen science promovate pentru adaptarea la schimbările climatice în România
3.	Mounir HADJI ¹ , Alexandru-Ionuț PETRIȘOR ^{1,2,3,4}	¹ Doctoral School of Urban Planning, "Ion Mincu" University of Architecture and Urbanism, Bucharest, Romania ² Department of Architecture, Faculty of Urbanism and Architecture, Technical University of Moldova, Chisinau, Moldova; ³ National Institute for Research and Development in Urban Planning, Construction and Sustainable Territorial Development URBAN-INCERC ⁴ National Institute for Research and Development in Tourism, Bucharest, Romania	Sustainability of green infrastructure in Biskra: Assessment and prospects for improvement
4.	Imane HAMDJ, Meriem CHABOU	EPAU, Algiers, Algeria	Leveraging GIS for Inclusive Urban Renewal: A Case Study of Bouboula, Algiers
5.	Daniela BURDUJA, Petru BACAL	Institute of Ecology and Geography of MSU, Chișinău, Republic of Moldova	Distinctive features of water resource use and management in the Danube-Black Sea Hydrographical Space (Republic of Moldova sector)
6.	Alexandru RUSU, Octavian GROZA	Alexandru Ioan Cuza University of Iasi, Faculty of Geography and Geology, Iasi Romani	Economic performance and location in the metropolitan area of Iasi - towards a polycentric model?
7.	Cristina-Oana MIRON ¹ , Valeria-Ersilia ONIGA ² , Ana-Maria LOGHIN ²	¹ Technical University of Civil Engineering Bucharest, Faculty of Geodesy, Bucharest, Romania ² Department of Terrestrial Measurements and Cadastre, Faculty of Hydrotechnical Engineering, Geodesy and Environmental Engineering, "Gheorghe Asachi" Technical	Evaluating LiDAR-UAS Point Cloud Classification Accuracy for Urban Applications: A Case Study



University of Iași, Iași, Romania		
8. Ana-Maria RUSU	UAUIM	Riverside area planning: barriers to urban waterfront accessibility
9. Igor SOROCEANU	Universității Pedagogice de Stat "Ion Creangă" din Chișinău	Principiile de organizare a alegerilor în Republica Moldova
10. Petru BUNDUC, Dorin LOZNOVANU	Institute of Ecology and Geography, Moldova State University (MSU), Chișinău, the Republic of Moldova	Particularities regarding the digitization of the population and housing census in the Republic of Moldova 2024 - <i>online</i>
11. George ȚURCĂNAȘU	Alexandru Ioan Cuza University of Iasi, Faculty of Geography and Geology, Iasi Romani	Teritoriu, teritorialitate și reformă administrativă. Relevanța scărilor de analiză
12. Gheorghe DURAC, Simina-Georgiana DURAC	Alexandru Ioan Cuza University of Iasi	Dreptul la un mediu sănătos - drept sui generis în cadrul catalogului CEDO
13. Cristian SECU, Dan LESENCIUC	Alexandru Ioan Cuza University of Iasi, Faculty of Geography and Geology, Iasi Romani	The response of individual pollution indices to the variables used. Case study
14. Gheorghe JIGĂU ¹ , Sergiu DOBROJAN ¹ , Iurie MOȚOI ¹ , Boris TURCHIN ¹ , Galina DOBROJAN ¹ , Nina PLĂCINTĂ ¹ , Cristian JIGĂU ²	¹ Moldova State University ² AO Institute of Agricultural and Environmental Policies	The conceptual-theoretical framework of climate-neutral pedoregenerative technological models
15. Angela CANȚÎR, Ioana CHIRIAC	¹ Institute of Ecology and Geography ² Moldova State University	Correlation between land use and geomorphological processes in Cubolta River basin (Republic of Moldova) - <i>online</i>



Session 4

Sustainable Development Biodiversity Conservation

Hour: 13:00 – 18:00

Class: 662

Chairman: Assoc. prof. Gheorghe JIGĂU; Lect. Alexandru BĂNICĂ; Asist. Vasile JITARIU

1. Ana-Maria-Daniela PACHIU ¹ Gabriela-Alina MUREȘAN ²	¹ Faculty of Geography, Babeș-Bolyai University, Cluj-Napoca, Cluj, Romania ² Department of Regional Geography and Territorial Planning, Faculty of Geography, Babeș-Bolyai University, Cluj-Napoca, Cluj, Romania	Quality education as a Sustainable Development Goal (SDG) in the context of marginalized communities at the local level. Case study: Pata Rât, Cluj-Napoca - <i>online</i>
2. Ovidiu GAVRILOVICI ¹	¹ Facultatea de Psihologie si Științe ale Educației	Case study - environmental psychology: from aggression and arrogance to pro-environmental behavior
3. Teodora Georgiana MIHĂILĂ ¹ , Oana Mihaela STOLERIU ²	¹ Alexandru Ioan Cuza University of Iasi, Faculty of Geography and Geology, Doctoral School of Geosciences, Romania ² Alexandru Ioan Cuza University of Iasi, Faculty of Geography and Geology, Iasi Romani	Visitors' perceptions of Bucovina on Instagram: which places generate more social media engagement?
4. Gabriel Valentin GEORGESCU	Department of Urban Planning, University "Ion Mincu", Bucharest	Sustainable development - Applied to inhabited Medieval Towns
5. Vasile JITARIU, Pavel ICHIM, Marina IOSUB, Adrian URSU	Alexandru Ioan Cuza University of Iasi, Faculty of Geography and Geology, Iasi Romania	Transition and sustainability of orchard cultivation in post-soviet Romania
6. Teodora SOMEȘAN	Babeș-Bolyai University, Faculty of Geography, Doctoral School of Geography, Cluj-Napoca, Romania	Tourism axes and sustainable development. The potential of Tirnaveilor axis in Mureș County - <i>online</i>
7. Valentina ANDRIUCĂ	Technical University of Moldova	Elements of integrated ecological monitoring within some hydrographic basins in the Codrii Plateau of the Republic of Moldova
8. Simona-Roxana ULMAN ¹ , Evan BOYLE ²	¹ CERNESIM Environmental Research Center, Department of Exact Sciences and Natural Sciences, Institute of Interdisciplinary Research, Alexandru Ioan Cuza University Of Iasi, Iasi Romania ² Scientific Researcher, MaREI Centre, Department of Sociology and Criminology University College Cork, Environmental Research Institute, Cork	Engagement for Transformation and Climate Change: Review and Case Studies



City, Ireland		
9. Virat JOLLI	Biodiversity and Environmental Sustainability (BEST), New Delhi, India	Community analysis of water birds of Keshopur Chumb Community Reserve, India - <i>online</i>
10. Veronica RAILEAN, Petru BACAL	Institute of Ecology and Geography of MSU, Chișinău, Republic of Moldova	Aprecierea potențialului economic regional și identificarea oportunităților de dezvoltare a Regiunii de Sud din Republica Moldova
11. Svetlana BACAL, Galina BUȘMACHIU	Institute of Zoology, Moldova State University	New record of coleoptera (Insecta) from the Plaiul Fagului Reserve, Republic of Moldova
12. Alina HOSSU, Cristian IOJĂ, Mihai NIȚĂ, Cristina MITINCU, Maria CALOTA	University of Bucharest, Romania	Inclusive nature-based solutions. A European perspective
13. Mihai BULAI, Lucian ROȘU	Alexandru Ioan Cuza University of Iasi, Faculty of Geography and Geology, Iasi Romania	Modele de bune practici în gestionarea durabilă zonelor cu patrimoniu turistic natural. Studiu de caz: geoparcurile



Poster Session

Hour: 10:00 – 18:00

Department of Geography Hall

Chairman: Asist. Dr. Marina IOSUB; Res. Diana-Elena BOBRIC; Laboratory technician Alexandra-Petronela STOLERIU

1. Biodiversity monitoring, Environment Protection

1. Iryna DOBYNDA, Halyna KOVBINKA, Vitalii PRYSAKAR	Yuriy Fedkovych Chernivtsi National University, Department of Physical Geography, Geomorphology, and Paleogeography	Preserving the landscape diversity of Volodymyr district of Volyn oblast – <i>online</i>
2. Laurentiu ROZYLOWICZ ¹ , Raluca BANCILA ² , Viorel POPESCU ^{1,3} , Andreea NITA ¹ , Marian MIREA ¹ , Steluța MANOLACHE ¹	¹ University of Bucharest, Center for Environmental Research, Bucharest, Romania ² University of Bucharest, Center for Environmental Research, Emil Racovita Institute of Speleology, Bucharest, Romania ³ Columbia University, Ecology, Evolution and Environmental Biology, New York, USA	Interactive tool for estimating abundance of wildlife populations (WildPop)
3. Andra-Cosmina ALBULESCU ^{1,2} , Michael MANTON ³ , Daniela LARION ¹ , Marius LAZDINIS ⁴ , Per ANGELSTAM ⁵	¹ Department of Geography, Faculty of Geography and Geology, Alexandru Ioan Cuza University of Iasi, Iasi, Romania ² Center for Risk Studies, Spatial Modelling, Terrestrial and Coastal System Dynamics, Faculty of Geography, University of Bucharest, Bucharest, Romania ³ Vytautas Magnus University, Bioeconomy Research Institute, Kaunas, Lithuania ⁴ Directorate-General for Agriculture and Rural Development, European Commission, Bruxelles, Belgium ⁵ Inland Norway University of Applied Sciences, Rena, Norway	Exploring the effects of forest privatisation on forestland dynamics in the post-communist era. A comparative case study of Romania and Lithuania (1986-2018)
4. Liliana-Gabriela ANIȚEI ¹ , Lucreția MIU ² , Marian CRUDU ²	¹ Department of Geography, Faculty of Geography and Geology, Alexandru Ioan Cuza University of Iasi, Iasi, Romania ² INCDTP-Sucursala Institutul de Cercetari Pielarie Incaltaminte, Bucuresti, Romania	Cercetări privind utilizarea inovativă a unor extracte vegetale în vederea obținerii de produse destinate conservării active și preventive a pieilor de patrimoniu
5. Andreea-Miruna CODREANU ¹ , Ștefania-Adelina MILEA ¹ , Justinian-Andrei TOMESCU ^{2,3} , Alin-Constantin DÎRȚU ^{1,4} ,	¹ REX DAN Research Infrastructure, “Dunărea de Jos” University of Galați, Galați, Romania ² SC Hofigal Export Import SA, Bucharest, Romania ³ Faculty of Chemical Engineering and Biotechnologies, Department Bioresources and	Per- and poly-fluoroalkyl substances (PFAS) in edible fish species from the Lower Danube River - <i>online</i>



Cătălina ITICESCU ^{1,5} , Puiu-Lucian GEORGESCU ^{1,5}	Polymer Sciences, UNSTPB, Bucharest, Romania ⁴ Faculty of Chemistry, Department of Analytical Chemistry, „Alexandru Ioan Cuza” University of Iași, Iași, Romania; ⁵ Faculty of Sciences and Environment, Department of Chemistry, Physics and Environment, “Dunărea de Jos” University of Galați, Galați, Romania	
6. Iasemin SULIMAN, Iuliana-Mihaela TUDOR, Orhan IBRAM	"Danube Delta" National Institute for Research and Development, Tulcea, Romania	Assessment of Zooplanktonic Invertebrate Assemblages in Reconstructed and Natural Ecological Systems within the Danube Delta Biosphere Reserve - <i>online</i>
7. Ruxandra-Miruna GÎMBUȚĂ ¹ , Dan BURUIANĂ ²	¹ Department of Geography, Faculty of Geography and Geology, Alexandru Ioan Cuza University of Iasi, Iasi, Romania ² Administrația Națională „Apele Române” - Administrația Bazinală de Apă Prut-Bârlad, Iași, România	Măsurile necesare pentru reducerea efectelor presiunilor hidromorfologice: Reconnectarea și restaurarea meandrelor cursului de apă Jijia
2. G.I.S and Remote Sensing in Environmental Studies		
8. Adrian ROȘU, Daniel-Eduard CONSTANTIN, Mirela VOICULESCU	Facultatea de Științe și Mediu, IC Rexdan, Universitatea Dunărea de Jos din Galați, Galați, România	Assessment of urban air pollution utilizing remote sensing techniques and cost-effective sensor technologies - <i>online</i>
9. Andreea Florina STOLERIU ¹ , Iuliana Gabriela BREABĂN ^{1,2,3} , Alexandra Petronela STOLERIU ^{2,3} , Marian-Daniel BURUIANĂ ⁴	¹ Alexandru Ioan Cuza University of Iasi, Faculty of Geography and Geology, Doctoral School of Geosciences, Romania ² Alexandru Ioan Cuza University of Iasi, Faculty of Geography and Geology, Iasi Romani ³ Institute of Interdisciplinary Research - ICI-UAIC, CERNESIM Department ⁴ Prut Barlad Water Basin Administration	Water quality monitoring using Sentinel 2 for SDG 6 indicator
10. Iuliana Gabriela BREABĂN ^{1,2,3} , Diana-Elena BOBRIC ^{2,3} , Alexandra Petronela STOLERIU ^{2,3} , Andreea Florina STOLERIU ¹	¹ Alexandru Ioan Cuza University of Iasi, Faculty of Geography and Geology, Doctoral School of Geosciences, Romania ² Alexandru Ioan Cuza University of Iasi, Faculty of Geography and Geology, Iasi Romani ³ Institute of Interdisciplinary Research - ICI-UAIC, CERNESIM Department ⁴ Prut Barlad Water Basin Administration	Bibliometric analysis of water quality and vegetation indices derived from Sentinel 2 images
11. Bogdan-Ionuț PLESCA, Jozsef Pal FRINK, Ioana-Maria PLESCA, Bogdan APOSTOL	National Institute for Research and Development in Forestry “Marin Drăcea”	Geodiversity assessment in Natura 2000 protected areas: Application to Bârnova Forest



<p>12. Marius ADUMITROAEI¹, Ioana ZAIȚ (câs. LAZĂR)^{2,3}, Iuliana-Gabriela BREABĂN^{1,3}, Răzvan-Florian DEJU²</p>	<p>¹Alexandru Ioan Cuza University of Iasi, Faculty of Geography and Geology, Iasi Romani ²ANANP, Iași Territorial Service, Iași, Romania ³Doctoral School of Geosciences, Alexandru Ioan Cuza University of Iași, Iași, Romania</p>	<p>Multianual Assessment of Vegetation in Bârnova Forest Using Remote Sensing and GIS Analysis</p>
<p>3. Monitoring and Protected Areas; Sustainable Development</p>		
<p>13. Florina TATU, Lumișița SAFTOIU, Elena GRIGORE, Dana-Maria CONSTANTIN (OPREA), Georgiana-Daiana LÜFTNER</p>	<p>University of Bucharest, Faculty of Geography, Bucharest, Romania</p>	<p>Evaluation of the analysis of the perception of the opinion of the tourists regarding the tourist region of the Ciucas Mountains. Case study: the year 2012 versus the year 2023</p>
<p>14. Marinela ISTRATE, Sofia-Bianca TEODORU</p>	<p>Department of Geography, Faculty of Geography and Geology, Alexandru Ioan Cuza University of Iasi, Iasi, Romania</p>	<p>From strategy to action: Just Transition Fund in Romania</p>
<p>15. Andreea-Silvia POPA, Marius TELIȘCĂ, Mihai DIMA, Alexandru PASCARIU</p>	<p>Gheorghe Asachi Technical University of Iasi, Iasi, Romania</p>	<p>Sustainable Water Management Strategies in the context of climate change: case study - Zăbala River in the Putna catchment - <i>online</i></p>
<p>16. Camelia-Daniela MARELE, Carmen-Georgeta GHERGHELES, Cristina-Adriana ROSAN, Dorian-Stelian PANTEA, Eliza-Maria AGUD</p>	<p>University of Oradea, Faculty of Environmental Protection</p>	<p>Studies on the use of thermal disposed geothermal water, used as a hydroponic substrate in the cultivation of <i>Lactuca sativa</i></p>
<p>17. Ana-Maria ANASTASIEI¹, Lilian NIACȘU¹, Sergiu LOGHIN²</p>	<p>¹Alexandru Ioan Cuza University of Iasi, Faculty of Geography and Geology, Department of Geography ²Alexandru Ioan Cuza University of Iasi, Faculty of Geography and Geology, Department of Geology</p>	<p>UNESCO valorization of (geo)heritage in the Moldavian Plateau (Romania) between the Siret and Prut rivers: Implications for sustainable development</p>
<p>18. Zoulkanerou Orou PIAMI¹, Adrian URSU², Cristian-Constantin STOLERIU², Fadéby Modeste GOUISSI¹, Hotèkpo Hervé AKODOGBO³, David Darius ADJE¹, Koudjodé Simon ABAHI¹, Midogbo Pierre GNOHOSSOU¹</p>	<p>¹Université de Parakou, Bénin, ²Alexandru Ioan Cuza University of Iasi, Faculty of Geography and Geology, Department of Geology ³Université d'Abomey-Calavi Bénin</p>	<p>Effect of drought in tributary streams of the Alibori and Sota rivers on the structure and diversity of the benthic macroinvertebrate community in northern Benin</p>



4. Natural and Anthropogenic Environmental Risks

<p>19. Andra-Cosmina ALBULESCU^{1,2}, Mihai-Ciprian MĂRGĂRINT¹, Mihai NICULIȚĂ¹, Jianshuang WU³, Paolo TAROLLI⁴</p>	<p>¹Department of Geography, Faculty of Geography and Geology, Alexandru Ioan Cuza University of Iasi, Iasi, Romania ²Center for Risk Studies, Spatial Modelling, Terrestrial and Coastal System Dynamics, Faculty of Geography, University of Bucharest, Bucharest, Romania ³Institute of Environment and Sustainable Development in Agriculture, Chinese Academy of Agricultural Sciences, Beijing, China ⁴Department of Land, Environment, Agriculture and Forestry, University of Padua, Padua, Italy</p>	<p>Focused snapshots on drought vulnerability and self-reported preparedness among livestock farmers in the Moldavian Plateau</p>
<p>20. Florentina PASCARIU¹, Ciprian CHELARIU¹, Oana-Elena CHELARIU²</p>	<p>¹Alexandru Ioan Cuza University of Iasi, Faculty of Geography and Geology, Department of Geology ²Alexandru Ioan Cuza University of Iasi, Faculty of Geography and Geology, Department of Geology Alexandru Ioan Cuza University of Iasi, Faculty of Geography and Geology, Department of Geography</p>	<p>Estimating slope stability through invasive and non-invasive methods in the central area of Dorohoi (Botosani County)</p>
<p>21. Sergiu LOGHIN, Mihai BRÎNZILĂ</p>	<p>Alexandru Ioan Cuza University of Iasi, Faculty of Geography and Geology, Department of Geology</p>	<p>The depositional environment described by the sedimentary successions from Hirtop area (Suceava county - Eastern Carpathian Foreland Basin System)</p>
<p>22. Cornelia MARIN¹ Cristina GARLEA² Carmelia DRAGOMIR-BALANICA³</p>	<p>¹Colegiul Științific Național al Ariilor Naturale Protejate ²Instituția Academia Română CSCBAS ³Universitatea Dunărea de Jos</p>	<p>Gentrificarea rurală și amprenta de carbon rural gentrificaton and carbon footprint - <i>online</i></p>
<p>23. Iuliana BULIGA, Cristina-Oana STAN, Sergiu LOGHIN, Ciprian CHELARIU</p>	<p>Alexandru Ioan Cuza University of Iasi, Faculty of Geography and Geology, Department of Geology</p>	<p>The geochemical distribution of some heavy metals in the marine sediments on the Romanian coast of the Black Sea</p>

5. Soil Pollution and Systemic Impact of Land Use Change

<p>24. Iuliana-Gabriela BREABĂN^{1,2,3}, Ioana ZAIȚ (căs. LAZĂR)¹, Diana-Elena BOBRIC^{2,3}, Marius ADUMITROAEI², George ALION¹</p>	<p>¹Alexandru Ioan Cuza University of Iasi, Faculty of Geography and Geology, Doctoral School of Geosciences, Romania ²Alexandru Ioan Cuza University of Iasi, Faculty of Geography and Geology, Iasi Romani ³Institute of Interdisciplinary Research - ICI-UAIC, CERNESIM Department</p>	<p>The evolution of land use and carbon stock distribution in the Bârnova forest region</p>
--	--	--

6. Education for Environment Protection

<p>25. Virgil GÎRBACEA¹,</p>	<p>Babeș-Bolyai University, Faculty of Geography,</p>	<p>The First Determination of</p>
---	---	--



Liviu BUZILĂ ¹ , Nicolae HODOR ¹	Cluj-Napoca, Romania	the absolute age of the deposits of the 3RD terrace of Transilvania, using optically stimulated luminescence method
26. Ștefania-Adelina MILEA ¹ , Nina-Nicoleta LAZĂR ¹ , Ira-Adeline SIMIONOV ^{1,2} , Ștefan-Mihai PETREA ^{1,2} , Mădălina CALMUC ¹ , Valentina CALMUC ¹ , Puiu-Lucian GEORGESCU ³ , Cătălina ITICESCU ^{1,3} , Cătălin-Eugen PLATON ⁴	¹ REXDAN Research Infrastructure - "Dunarea de Jos" University of Galati, Romania ² Faculty of Food Science and Engineering, "Dunarea de Jos" University of Galati, Romania ³ Department of Chemistry, Physics and Environment, Faculty of Science and Environment, "Dunarea de Jos" University of Galati, Romania ⁴ ROMFISH	Monitoring mercury bioaccessibility in fish samples - <i>online</i>
27. Carmen-Georgeta GHERGHELES, Emilia-Valentina PANTEA, Monica-Adriana COSTEA	University of Oradea, Faculty of Environmental Protection	Studies regarding the risks on the soils, water and air generated by the Santăul Mic clay and ash deposits and the preventive measures - <i>online</i>
28. Viorel PARASCHIV ¹ , Gheorghe NICULIȚĂ ² , Cristina-Georgiana VOICU ³	¹ Technological High School of Tourism Economics, Iași – Romania ² Universitatea Pedagogică de Stat "Ion Creangă" Chișinău, Republica Moldova ³ Școala Gimnazială "Titu Maiorescu" Iași	The Reflection of a Climate Hazard on Social Media: The Saharan Dust Storm of April 23/24, 2024
29. Ioana ZAIȚ (căs. LAZĂR) ^{1,2} , Iuliana-Gabriela BREABĂN ^{1,2,3} , Răzvan-Florian DEJU ¹ , Marius ADUMITROAEI ³	¹ ANANP, Iași Territorial Service, Iași, Romania ² Doctoral School of Geosciences, Alexandru Ioan Cuza University of Iași, Iași, Romania ³ Alexandru Ioan Cuza University of Iasi, Faculty of Geography and Geology, Iasi Romani	Cultural Ecosystem Services - main characteristics and challenges. Outdoor recreation in Barnova Forest
30. Ioana ZAIȚ (căs. LAZĂR) ^{1,2} , Iuliana-Gabriela BREABĂN ^{1,2,3} , Răzvan-Florian DEJU ¹	¹ ANANP, Iași Territorial Service, Iași, Romania ² Doctoral School of Geosciences, Alexandru Ioan Cuza University of Iași, Iași, Romania ³ Alexandru Ioan Cuza University of Iasi, Faculty of Geography and Geology, Iasi Romani	Protected natural areas - source of ecosystem services
7. Atmospheric Environment and Climate Change		
31. Elena GRIGORE, Dana-Maria CONSTANTIN (OPREA), Florina TATU, Georgiana-Daiana LÚFTNER, Luminița SAFTOIU	University of Bucharest, Faculty of Geography, Bucharest, Romania	The usefulness of P-guy and Walter-Lieth charts in the quantitative evaluation of drought and dryness phenomena. Case study: mainland Dobruja
32. Daniel-Eduard CONSTANTIN, Adrian ROȘU, Mirela VOICULESCU, Cătălina ITICESCU, Lucian GEORGESCU	Universitatea Dunarea de Jos Galati Romania	The first air quality observations in Romania using the REXDAN research vessel on Danube Delta - <i>online</i>



33. Cosmin BURCEA, Olga VIZITIU, Irina CALCIU	National Research and Development Institute for Soil Science, Agrochemistry and Environment - ICPA Bucharest, Romania	Evaluation of the carbon dioxide sequestration potential in arable soils of the Romanian Plain
34. Liliana DRAGOI (ONIU) ¹ , Marius Mihai CAZACU ² , Iuliana-Gabriela BREABĂN ¹	¹ Alexandru Ioan Cuza University of Iasi, Faculty of Geography and Geology, Iasi Romania ² Department of Physics, "Gheorghe Asachi" Technical University of Iasi, Romania	Analysis of the PM2.5/PM10 Ratio in Three Urban Areas of Northeastern Romania
35. Vasile JITARIU, Lilian NIACȘU, Adrian URSU, Pavel ICHIM	Alexandru Ioan Cuza University of Iasi, Faculty of Geography and Geology, Iasi Romani	Changes in the growing season for apple and plum cultivation in Romania in the context of future climate change

8. Environmental Geography and Urban Planning

36. Tatiana-Denise NIMPA-FOZONG ¹ , Tiafack OJKU ¹ , Cristian Constantin STOLERIU ² , Simeon TCHAKONTE ³ , Christiane Guilaine NIMPA NGEUMO ⁴	¹ Geography Department, University of Yaounde I, Yaounde, Cameroon ² Department of Geography, Faculty of Geography and Geology, Alexandru Ioan Cuza University of Iasi, Iasi, Romania ³ Department of Environmental Science, Faculty of Science, University of Buea, Buea, Cameroon ⁴ Department of Geography and Planning, Faculty of Arts, University of Bamenda, Bamenda, Cameroon	Urban sprawl and occupation of flood prone areas in Yaounde-Cameroon (Central Africa)
37. Octavian-Liviu MUNTEAN, Nicolae BACIU, Vlad MĂCICĂȘAN, Viorel ARGIUȘ	Babeș-Bolyai University, Faculty of Environmental Science and Engineering, Cluj-Napoca, Romania	Environmental impact assessment of uncontrolled urban sprawl in a peri-urban area: A case study of Cluj-Napoca Municipality, Romania
38. Grigore NEPOTU ¹ , Simona-Maria CUCIUREANU ²	¹ Doctoral School of Geosciences, Alexandru Ioan Cuza University of Iași, Iași, Romania ² Advisor, Iasi County Council, Iasi, Romania	Demographic particularities of the Iasi metropolitan area in the post-December period. Causes and perspectives
39. Simona-Maria CUCIUREANU ¹ , Grigore NEPOTU ²	¹ Advisor, Iasi County Council, Iasi, Romania ² Doctoral School of Geosciences, Alexandru Ioan Cuza University of Iași, Iași, Romania	The role of socio-economic development in the evolution of the school dropout rate in Iasi County

9. Water pollution and Waste Management

40. Petru PRODAN, Constantin BULIMAGA	Institute of Ecology and Geography of MSU, Chișinău, Republic of Moldova	Seasonal variation of the physico-chemical parameters and their influence on the planktonic algoflora in the Răut river, Bălți city, Republic of Moldova
41. Andrian ȚUGULEA ¹ ,	¹ Ecourbanistic laboratory, State University of	Aspects regarding the



Petru PRODAN ²	Moldova, Institute of Ecology and Geography ² Institute of Ecology and Geography of MSU, Chișinău, Republic of Moldova	quality of water from the artesian wells of the city of Ceadâr-Lunga, Republic of Moldova
42. Emilia-Valentina PANTEA, Voichița TIMIȘ-GÂNSAC, Carmen-Georgeta GHERGHELES, Eliza-Maria AGUD, Monica-Adriana COSTEA, Camelia-Daniela MARELE	University of Oradea, Faculty of Environmental Protection	A sustainability assessment of biogenic potential of digestate from wastewater treatment plant and green waste from ecological landfill
43. Oana-Letiția CIUBOTARIU, Andrei-Cosmin OLARIU, Ștefania-Lorena MIRON, Maria-Teodora PAIU, Paula-Georgiana SAVIN, Vasile JITARIU	Department of Geography, Faculty of Geography and Geology, Alexandru Ioan Cuza University of Iasi, Iasi, Romania	The Water Footprint Perception among the Population of Iași Municipality
44. Oana-Letiția CIUBOTARIU, Andrei-Cosmin OLARIU, Ștefania-Lorena MIRON, Maria-Teodora PAIU, Paula-Georgiana SAVIN, Vasile JITARIU	Department of Geography, Faculty of Geography and Geology, Alexandru Ioan Cuza University of Iasi, Iasi, Romania	The Domestic Water Footprint of the Inhabitants of Iași Municipality. Preliminary results
